

MICRO SWITCH

1 DIVISION OF HONEYWELL INTERNATIONAL, INCORPORATED (FORMERLY HONEYWELL ELECTRONIC CORPORATION) MILWAUKEE, WISCONSIN

FED. MFR CODE 91929

SWITCH-ENCLOSED

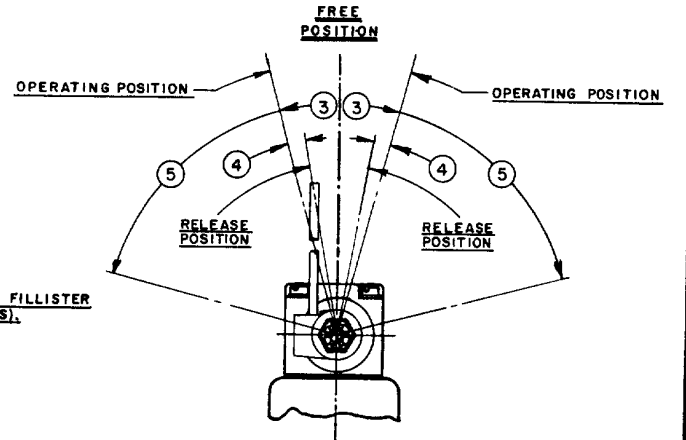
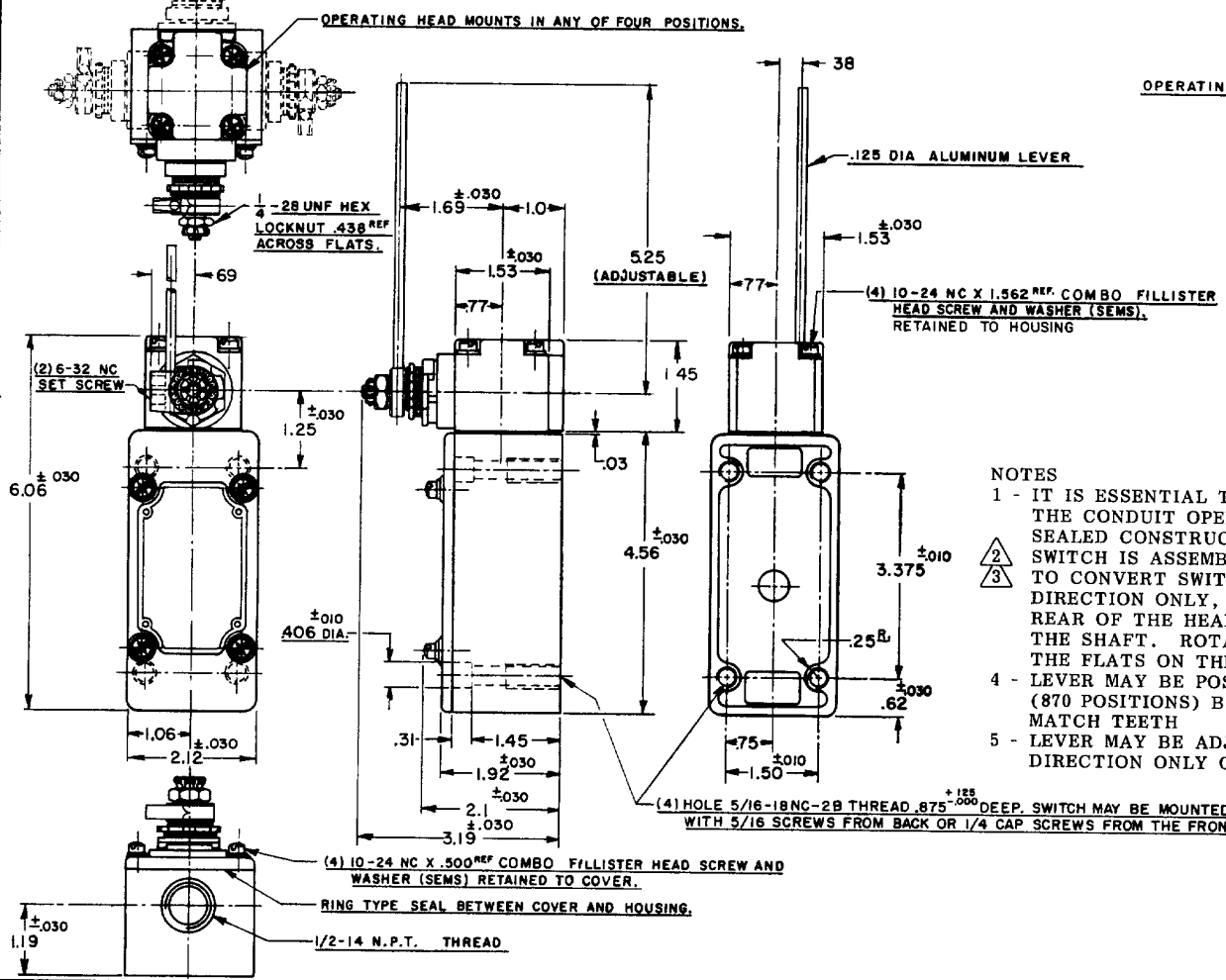
CATALOG LISTING

151ML10

THIS DRAWING COVERS A PROPRIETARY ITEM AND IS THE PROPERTY OF MICRO SWITCH, A DIVISION OF HONEYWELL. THIS DRAWING IS NOT TO BE COPIED OR USED WITHOUT THE APPROVAL OF MICRO SWITCH

M

74-983
 DRAWING
 J A P 23 SEPT 83
 CHECK
 C F C
 30 SEPT 83
 CHECK
 12
 ISSUE
 10 M
 DRAWING NUMBER
 151ML10
 REPLACES
 151ML10
 RELEASE NO.



NOTES

- 1 - IT IS ESSENTIAL TO PREVENT ENTRANCE OF HARMFUL AGENTS THRU THE CONDUIT OPENING TO OBTAIN THE FULL BENEFIT OF THE SEALED CONSTRUCTION PROVIDED IN THIS UNIT
- 2 TO CONVERT SWITCH FOR ACTUATION IN COUNTER-CLOCKWISE DIRECTION ONLY, REMOVE THE HEAD AND SLIDE THE CAM TOWARD THE REAR OF THE HEAD SUFFICIENTLY TO DISENGAGE FROM THE FLATS ON THE SHAFT. ROTATE THE CAM 180° AND RE-ENGAGE THE CAM WITH THE FLATS ON THE SHAFT
- 3
- 4 - LEVER MAY BE POSITIVELY LOCKED AT INTERVALS OF APPROX 0.4° (870 POSITIONS) BY POSITIONING LEVER AND ROTATING SPACER TO MATCH TEETH
- 5 - LEVER MAY BE ADJUSTED TO ACTUATE THE SWITCH IN THE CLOCKWISE DIRECTION ONLY OR THE COUNTER-CLOCKWISE DIRECTION ONLY

CHARACTERISTICS	ELECTRICAL DATA	SCALE 1/2 TO 1
OPERATING FORCE ----- 5 OZ. MAX.	CONTACT ARRANGEMENT TWO CIRCUIT - DOUBLE THROW DOUBLE BREAK	DO NOT SCALE PRINT
FULL OVERTRAVEL FORCE ----- 7 OZ. MAX.	BREAK DISTANCE	UNLESS OTHERWISE SPECIFIED
RELEASE FORCE ----- 3/4 OZ. MIN.		DIMENSIONS ARE IN INCHES
PRETRAVEL ----- ③ -15° MAX	10A-120, 240, 480, OR 800 VAC	TOLERANCES ARE:
DIFFERENTIAL TRAVEL ----- ④ -7° MAX.	1/2 HP-120 VAC, 1 HP-240 VAC	ONE PLACE (0) ±.030
OVERTRAVEL ----- ⑤ -60° MIN.	0.8 A-115 VDC, 0.4 A-230 VDC	TWO PLACE (.00) ±.015
SWITCH-BASIC REPLACEMENT ----- 1MNS	PILOT DUTY 800 VAC MAX	THREE PLACE (.000) ±.008
	UL	ANGLES ±
	SP	WEIGHT