

**24 V dc Source Output (16 Circuits)
With Removable Terminal Board
IC610MDL158**

This module provides sixteen 24 V dc source output circuits, each capable of controlling user supplied discrete (ON/OFF) loads. The output switching capacity of this module is 0.5 amps at 24 V dc. Typical loads that can be controlled by this module are motor starters, relay coils, solenoid valves, and indicator lights. The output switching circuits on the module are arranged in 2 groups with 8 circuits in each group. Each group of 8 output circuits is protected by a 5 amp fuse. All 16 circuits can be referenced to a single source of dc power or each group of 8 can be referenced to a separate source of power. Field connections are made to screw terminals on a removable terminal board mounted on the module's faceplate. Each terminal will accept up to one No. 12 AWG wire or two No. 14 AWG wires. The operating state, either ON or OFF, is indicated by a corresponding LED viewed on the module's faceplate. Following are specifications for each of the 16 circuits.

Output Points	16
Operating Voltage	5 to 24 V dc
Peak Voltage	40 V dc
ON Voltage Drop	Maximum 1.5 V dc 0.8 V dc @ 0.5 amp (Typical) 0.7 V dc @ 0.1 amp (Typical)
Maximum Current*	0.5 amps
Maximum Leakage Current	10 mA @ 40 V dc
OFF to ON Response	0.1 ms (Resistive)
ON to OFF Response	1.0 ms (Resistive)
Circuit Indicator	Logic Side
Fuses (Internal)	(2) 5 amp (in output common line, one for each group of 8 circuits)
Internal Power Consumption	12 mA for each ON circuit
Units of Load	20 Units @ 9 V dc
Weight	7.1 oz (200 g)

*Maximum load current is dependent on ambient temperature as shown in figure 6.32.

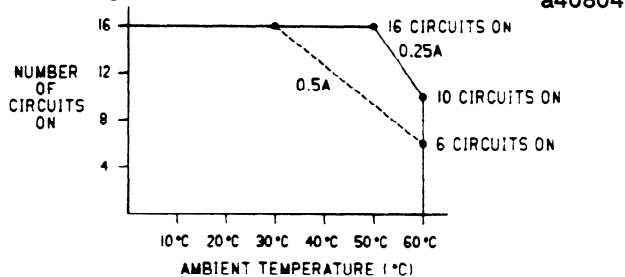
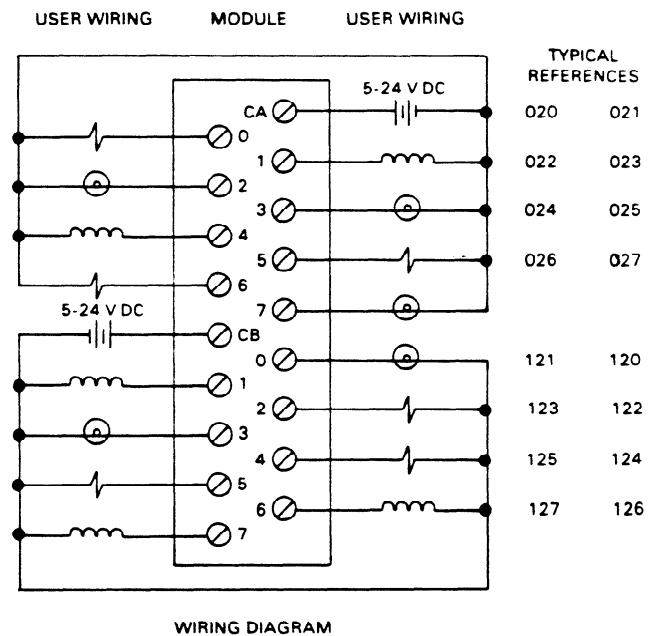


Figure 6-32. I/O Points vs Temperature

a40805



WIRING DIAGRAM

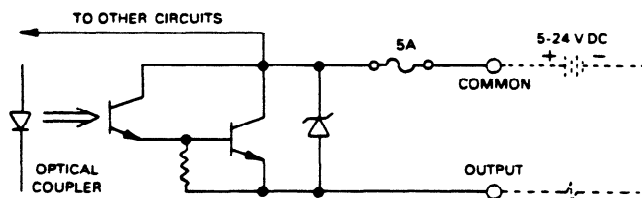


Figure 6-33. Wiring for 24 V dc Source Outputs