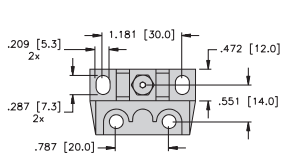


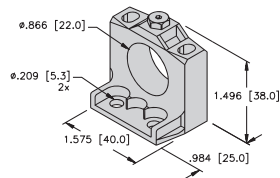
# Inductive Rectangular Sensors



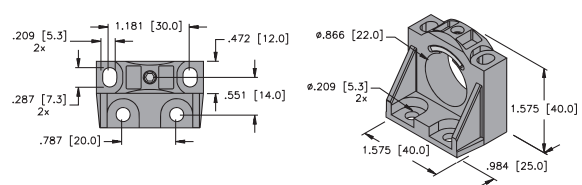
Housing Style - Rectangular	Part Number	ID Number	Features	Embeddable	Sensing Range (mm)	Output	
<b>CK40 - Embeddable/Nonembeddable, minifast® Connector</b> 	Bi15U-CK40-ADZ30X2-B1131 W/BS 2.1	M4280090	<i>Uprox</i>	•	15	2-Wire AC/DC Short-Circuit Protected	
	Ni25U-CK40-ADZ30X2-B1131 W/BS 2.1	M4280290	<i>Uprox</i>		25		
	Ni35U-CK40-ADZ30X2-B1131 W/BS 4	M4280410	<i>Uprox</i>		35		
	Bi15-CK40-ADZ30X2-B1131/S34 W/BS 2.1	M4244090		<b>WFI</b>	•	15	2-Wire AC/DC Short-Circuit Protected
	Bi15-CK40-AZ3X2-B1131 W/BS 2.1	M1335091			•	15	2-Wire AC/DC
	Ni20-CK40-AZ3X2-B1131 W/BS 2.1	M1335291				20	
<b>CK40 - Embeddable/Nonembeddable, microfast® Connector</b> 	Bi15U-CK40-ADZ30X2-B3131 W/BS 2.1	M4280091	<i>Uprox</i>	•	15	2-Wire AC/DC Short-Circuit Protected	
	Ni25U-CK40-ADZ30X2-B3131 W/BS 2.1	M4280291	<i>Uprox</i>		25		
	Ni35U-CK40-ADZ30X2-B3131 W/BS 4	M4280430	<i>Uprox</i>		35		
	Bi15-CK40-ADZ30X2-B3131/S34 W/BS 2.1	M4244290		<b>WFI</b>	•	15	2-Wire AC/DC Short-Circuit Protected
	Bi15-CK40-AZ3X2-B3131 W/BS 2.1	M1335095			•	15	2-Wire AC/DC
	Ni20-CK40-AZ3X2-B3131 W/BS 2.1	M1335290				20	



**BS 2.1 Mounting Bracket**



**BS 4 Mounting Bracket**



For detailed sensor specifications see Section M.  
Normally Closed versions available upon request, consult factory.



Voltage	Switching Freq. (Hz)	Operating Current (mA)	Operating Temp. (°C)	Protection	Housing	Front Cap/Face	Power LED	Output LED	Mating Cord, Cable Length/Jacket	Wiring Diagram #	Wiring Diagrams
10-300 VDC 20-250 VAC	60	≤400/300	-30 to +85	IP 68	PBT	PBT	GN	YE	RKM 30-*M	1	<p><b>Diagram 1</b></p> <p><b>Diagram 2</b></p>
	60	≤400/300	-30 to +85	IP 67	PBT	PBT	GN	YE	RKM 30-*M	1	
	60	≤400/300	-30 to +85	IP 68	PBT	PBT	GN	YE	RKM 30-*M	1	
10-300 VDC 20-250 VAC	30	≤400/300	-25 to +70	IP 67	PBT	PBT	GN	YE	RKM 30-*M	1	
	20	≤400/300	-25 to +70	IP 67	PBT	PBT	GN	YE	RKM 30-*M	1	
10-300 VDC 20-250 VAC	20	≤400/300	-25 to +70	IP 67	PBT	PBT	GN	YE	RKM 30-*M	1	
	20	≤400/300	-25 to +70	IP 67	PBT	PBT	GN	YE	RKM 30-*M	1	
10-300 VDC 20-250 VAC	60	≤400/300	-30 to +85	IP 68	PBT	PBT	GN	YE	KB 3T-*	2	
	60	≤400/300	-30 to +85	IP 67	PBT	PBT	GN	YE	KB 3T-*	2	
	60	≤400/300	-30 to +85	IP 68	PBT	PBT	GN	YE	KB 3T-*	2	
10-300 VDC 20-250 VAC	30	≤400/300	-25 to +70	IP 67	PBT	PBT	GN	YE	KB 3T-*	2	
10-300 VDC 20-250 VAC	20	≤400/300	-25 to +70	IP 67	PBT	PBT	GN	YE	KB 3T-*	2	
	20	≤400/300	-25 to +70	IP 67	PBT	PBT	GN	YE	KB 3T-*	2	

Rectangular

For material descriptions see page M36.