



Safety switch NP

- ▶ Mounting with 40 mm spacing
- ▶ Cable entry M20 x 1.5
- ▶ Plug connector optional



Approach direction



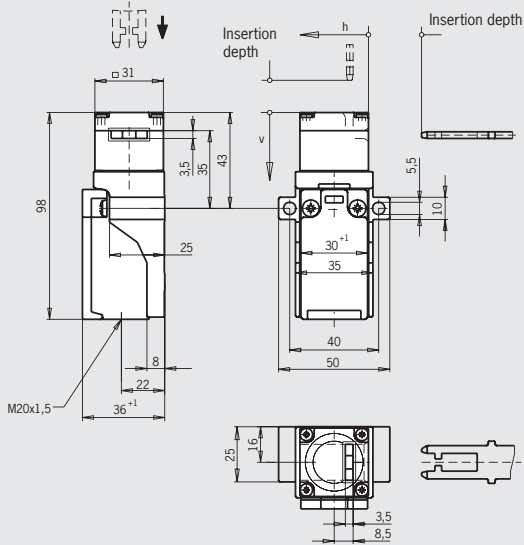
Horizontal and vertical
Can be adjusted in 90° steps

Switching elements

- ▶ **618** Slow-action switching contact
1 NC \ominus
- ▶ **628** Slow-action switching contact
1 NC \ominus + 1 NO
- ▶ **638** Slow-action switching contact
2 NC \ominus
- ▶ **648** Slow-action switching contact
2 NC \ominus + 1 NO

Cable entry M20 x 1.5

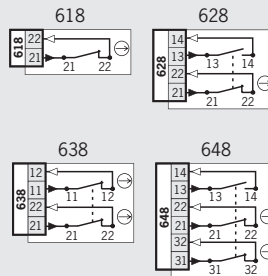
Dimension drawing



Please order actuator separately
(See pages 90-93)

For cable glands see page 104

Wiring diagrams Actuator inserted



Ordering table

Series	Mounting	Connection	Switching element	Order no./item
NP	AB with 40 mm spacing	1 Cable entry 1 x M20 x 1.5	618 1 NC \ominus	083680 NP1-618AB-M
			628 1 NC \ominus + 1 NO	083686 NP1-628AB-M
			638 2 NC \ominus	083690 NP1-638AB-M
			648 ¹⁾ 2 NC \ominus + 2 NO	082276 ¹⁾ NP1-648AB-M

1) No \ominus Approval