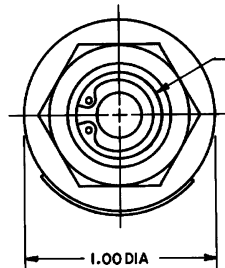
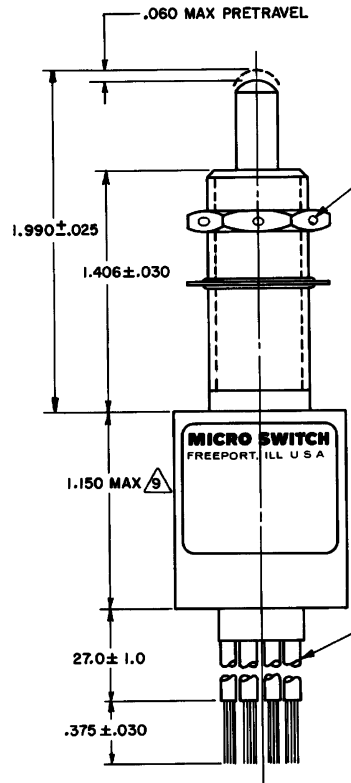


704EN 61-B  
 DRAWING NUMBER  
 M 704EN 61-B  
 REV. 7  
 DATE 12 JAN 58  
 CHECKER H.C.K.  
 DESIGNED BY L.L. BLANKENHOOP  
 DRAWN BY L.L. BLANKENHOOP  
 APPROVED BY L.L. BLANKENHOOP  
 TITLE MICRO SWITCH



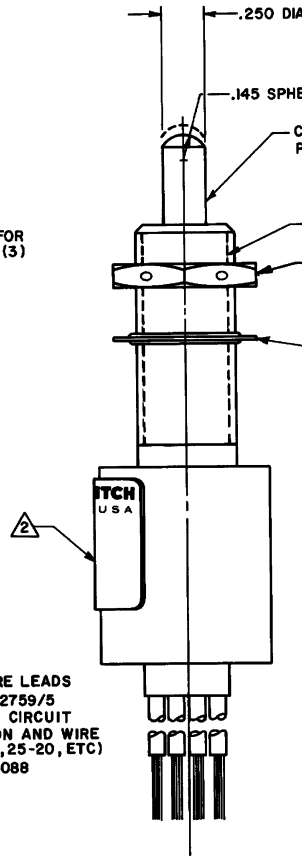
STEEL RETAINING RING, REMOVE TO REPLACE DAMAGED PLUNGER ASSEMBLY  $\nabla$



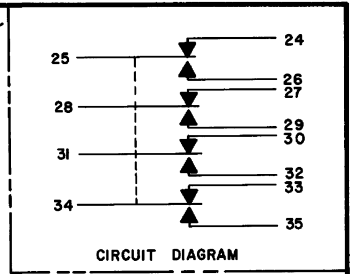
.047 DIA HOLE FOR WIRE LOCKING (3)

MICRO SWITCH  
 FREEPORT, ILL. U.S.A.

(12) NO. 20 WIRE LEADS PER MIL-W-22759/5 MARKED WITH CIRCUIT IDENTIFICATION AND WIRE GAGE (24-20, 25-20, ETC) PER MIL-W-5088



CORROSION RESISTANT STEEL PLUNGER ASSEMBLY (REPLACEABLE)  $\nabla$   $\nabla$   $\nabla$   
 5/8-24 UNEF THREAD TO WITHIN .125 OF SHOULDER  
 CORROSION RESISTANT STEEL HEX NUT .812 ACROSS FLATS X .125 THICK MS21340-05  $\nabla$   
 CORROSION RESISTANT STEEL INTERNAL TOOTH LOCKWASHER .87 DIA X .022 REF THICK  $\nabla$



- NOTES
- ENCLOSURE AND MOUNTING BUSHING ARE CORROSION RESISTANT STEEL
  - CIRCUIT DIAGRAM AND CAT. LIST. ARE SHOWN ON NAMEPLATE
  - PLUNGER MAY BE DEPRESSED FLUSH WITH TOP OF BUSHING WITHOUT DAMAGING THE SWITCH
  - SWITCH SEALED PER MIL-PRF-8805 SYMBOL 4
  - COINCIDENCE OF OPERATING AND RELEASING POINTS: .010 INCH OF PLUNGER TRAVEL
  - NOTED ELECTRICAL RATINGS APPLY AS SPECIFIED IN MIL-PRF-8805/48 UP TO 185°F
  - REPLACE PLUNGER ASSEMBLY ONLY WITH MICRO SWITCH PACKET 15PA165-RN
  - HARDWARE MAY BE PACKAGED UNASSEMBLED PER MIL-PRF-8805
  - THIS DIMENSION EXCLUDES THE RESILIENT POTTING MATERIAL ON THE BOTTOM OF SWITCH

CHARACTERISTICS		ELECTRICAL DATA	
OPERATING FORCE	3 LB MIN	CONTACT ARRANGEMENT S P D T (4)	
FULL OVERTRAVEL FORCE	30 LBS MAX	LOAD	28 VDC
RELEASE FORCE	1.5 LBS MIN		SEA LEVEL
DIFFERENTIAL TRAVEL	.020 MAX	RES	7
OVERTRAVEL	$\nabla$	IND	4
		MOTOR	4

THIS DRAWING COVERS A PROPRIETARY ITEM AND IS THE PROPERTY OF MICRO SWITCH A DIVISION OF HONEYWELL. THIS DRAWING IS NOT TO BE COPIED OR USED WITHOUT THE APPROVAL OF MICRO SWITCH.

CATALOG LISTING

**MICRO SWITCH**  
 FREEPORT ILLINOIS U.S.A.  
 A DIVISION OF HONEYWELL

**SWITCH-ENCLOSED**

**704EN61-B**

WEIGHT