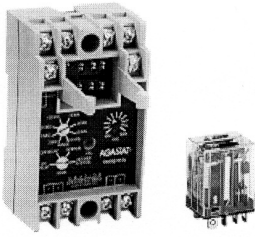


## SSF Series, Programmable Time Delay Relay



### Product Facts

- 4 user-programmable timing modes
- 0.1 sec. to 10 hr. programmable timing range
- Parameters set with recessed screwdriver dials
- Universal voltage (plug-in relay dependent)
- 10A DPDT replaceable output relay minimizes downtime
- Front screw terminals
- DIN-rail, panel or machine tool track mount
- File E15631, File LR29186



Users should thoroughly review the technical data before selecting a product part number. It is recommended that user also seek out the pertinent approvals files of the agencies/laboratories and review them to ensure the product meets the requirements for a given application.

### Timing Specifications

**Timing Modes** — Modes are user selectable via screwdriver adjustment of recessed 4-position selector dial. Modes offered are: On-Delay, Off-Delay, Interval and Latching Interval.

**Timing Ranges** — 0.1 to 3 / 0.33 to 10 / 1 to 30 / 4 to 120 sec.; 0.33 to 10 / 1 to 30 / 2 to 60 min.; 0.33 to 10 hr.

**Timing Range Selection** — Screwdriver select via recessed 8-position selector dial.

**Timing Adjustment** — Recessed potentiometer adjustment with reference calibrations.

**Accuracy** — Repeat Accuracy —  $\pm 1\% \pm 0.01$  sec. Overall Accuracy —  $\pm 3\% \pm 0.01$  sec.

**Reset Time** — 30 ms.

**Relay Operate Time** — On-Delay and Interval mode: 30 ms.

**Relay Release Time** — Off-Delay, Interval and Latching Interval: 30 ms. (with factory-installed relay).

### Contact Data @ 25°C

**Arrangements** — 2 Form C (DPDT).

**Rating** — 10A @ 28VDC or 120VAC, resistive; 1/3 HP @ 120/240VAC 345VA.

**Expected Mechanical Life** — 10 million operations (with factory-installed relay).

**Expected Electrical Life** — 500,000 operations, min., at rated resistive load (with factory-installed relay).

**Initial Dielectric Strength** — Between Coil/Control Switch and Contacts — 1,500VAC for one minute.

### Input Data @ 25°C

**Voltage** — See Ordering Information section for details.

**Power Requirement** — 2W max.

### Transient Protection

Non-repetitive transients of the following magnitudes will not cause spurious operation of affect function and accuracy.

Operating Voltage	<0.1 ms	<1 ms
24, 48 VAC/VDC	1,000V	480V
120, 240VAC/VDC	3,000V	2500V*

\* Min. source impedance of 100 ohm@120/240VAC, 3000V <0.1 sec. Environmental Data

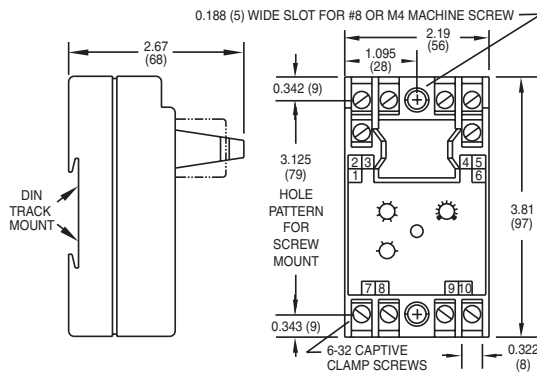
### Environmental Data

**Temperature Range** — Storage — -40°C to +85°C  
Operating — -30°C to +65°C

### Mechanical Data

**Mounting/Termination** — Panel, DIN-rail, Machine Tool mounting track mounting case with screw terminals.

**Weight** — 5.5 oz. (156g) approximately



Outline Dimensions

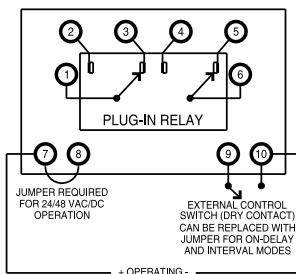
### Ordering Information

<b>SSF</b>	<b>R</b>	<b>90</b>	<b>A</b>
<b>Series SSF</b> Universal Timer	<b>R = UL</b> Recognized Component	<b>Operating Mode 90</b> Multiple modes - On-Delay Off-Delay Interval Latching Interval	<b>Operating Voltage</b> (+10%, -15%) A = 120VAC, 50/60 Hz. B = 240VAC, 50/60 Hz. E = 24VAC, 50/60 Hz. F = 48VAC, 50/60 Hz. N = 48VDC O = 24VDC P = 125VDC X = No factory-installed relay.†

† Voltage determined by customer-supplied relay. Only relays that operate on the above-listed voltages should be used. Timer operation using other relay voltages is not recommended.

### Authorized distributors are likely to stock the following:

SSFR90A  
SSFR90X



Wiring Diagram (Top View)