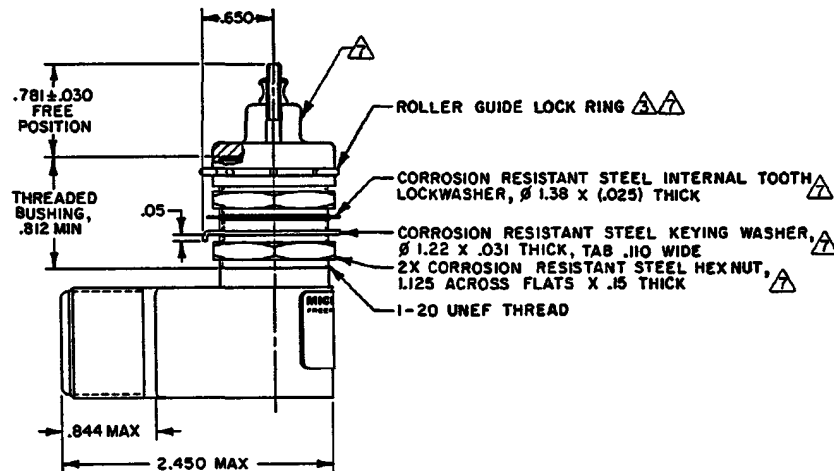
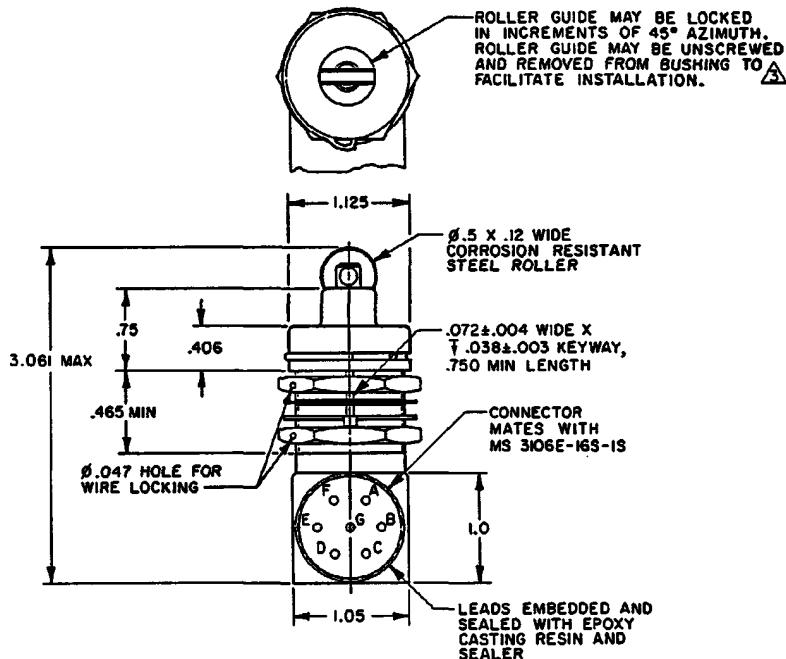
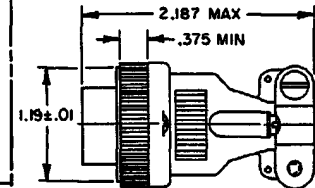
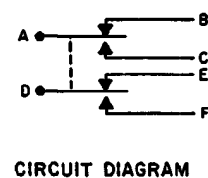


**MICRO SWITCH**  
a Honeywell Division

**SWITCH-ENCLOSED**

CATALOG LISTING  
**21EN76-R1**

FED. MFG. CODE 91929



**NOTES**

- 1 - ENCLOSURE FINISHED WITH GREEN EPOXY BASED ENAMEL COLOR NO. 34151 PER FEDERAL STANDARD 595
- 2 - SWITCH SEALED PER MIL-PRF-8805 SYMBOL 4
- 3 - TO ADJUST ROLLER DIRECTION REMOVE ROLLER GUIDE LOCK RING, SCREW ROLLER GUIDE DOWN AS FAR AS POSSIBLE, THEN UNSCREW TO DESIRED DIRECTION. SECURE BY REPLACING ROLLER GUIDE LOCK RING
- 4 - CIRCUIT DIAGRAM AND CATALOG LISTING ARE SHOWN ON NAMEPLATE
- 5 - FURNISHED UNASSEMBLED WITH EACH UNIT
- 6 - COINCIDENCE OF OPERATING AND RELEASING POINTS: .010 OF PLUNGER TRAVEL
- 7 - HARDWARE MAY BE PACKAGED UNASSEMBLED PER MIL-PRF-8805
- 8 - UNDER LABORATORY TESTING, THIS CATALOG LISTING HAS DEMONSTRATED CAPABILITY IN CONTROLLING A 120VAC, 60HZ, 2A. INDUCTIVE LOAD FOR 25,000 CYCLES. TESTING WAS CONDUCTED PER MIL-PRF-8805 CONDITIONS AND LOADS PER PARAGRAPH 4.7.30.

CATALOG LISTING  
**21EN76-R1**

ISSUE  
**23**

REVISIONS

A	0093092	4 JUN 98
B	0062685	23 MAR 10

CHECK

JAF

5 JUN 98

CHECK

JAF

5 JUN 98

CHECK

JAF

5 JUN 98

CHECK

JAF

5 JUN 98

CHECK

JAF

5 JUN 98

CHECK

JAF

REPLACES

SR-9360

RELEASE NO.

23MAR10

CHECK

CHECK

JAF

5 JUN 98

CHECK

CHECK

JAF

5 JUN 98

CHECK

JAF

5 JUN 98

CHECK

JAF

5 JUN 98

CHECK

JAF

5 JUN 98

CHECK

JAF

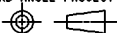
5 JUN 98

CHECK

JAF

THIS DRAWING COVERS A PROPRIETARY ITEM AND IS THE PROPERTY OF MICRO SWITCH, A DIVISION OF HONEYWELL. THIS DRAWING IS NOT TO BE COPIED OR USED WITHOUT THE APPROVAL OF MICRO SWITCH

THIRD ANGLE PROJECTION



CHARACTERISTICS	ELECTRICAL DATA
OPERATING FORCE-----6-12 LB	CONTACT ARRANGEMENT <b>2X SPDT</b>
FULL OVERTRAVEL FORCE-----30 LB MAX	SCALE <b>FULL</b>
RELEASE FORCE-----4 LB MIN	DO NOT SCALE PRINT
PRETRAVEL-----0.040 MAX	UNLESS OTHERWISE SPECIFIED TOLERANCES ARE
DIFFERENTIAL TRAVEL-----0.020 MAX	ONE PLACE (.01) ±.030
OVERTRAVEL-----250 MIN	TWO PLACE (.00) ±.015
	THREE PLACE (.000) ±.005
	ANGLES ±
	WEIGHT <b>8 OZ MAX</b>

LOAD	28 VDC
SEA LEVEL	50,000 FT.
RES	5
IND	3
MOTOR	4
LAMP	

ANSI Y14.5M-1982 APPLIES