



802MC-AY5 with
802MC-W1A Lever

Description

Bulletin 802M compact pre-wired limit switches are factory sealed to meet the demanding requirements for NEMA 1, 4, 6P, 13, and IP67 (IEC529) enclosures. Outstanding features designed into the switch make it ideal for wet environments and washdown applications.

Bulletin 802MC limit switches are also factory sealed against fluid ingress. In addition, they feature a NEMA 4X rating, making the 802MC an ideal solution for washdown applications with harsh chemicals.

A wide variety of operating heads and operating levers are available. Operating heads can be mounted in four positions, 90° apart.

Sealing System

The cable entrance and wire strands are epoxy sealed to protect against liquids entering or wicking into the switch. The interface between the operating head and base is sealed with a chemically resistant O-ring. The

operating shaft for lever type switches is protected by a three-way seal. Push type switches have a special boot to prevent oil and other foreign material from entering the mechanism. A flexible diaphragm seal between the operating head and the switch body helps isolate the switch against the ingress of contaminants. After pre-wiring, the cover is factory installed and epoxy sealed.

Construction

The body and operating head of the Bulletin 802M and 802MC pre-wired limit switch are constructed from a glass filled polymer. This material is characterized by excellent dimensional stability and is resistant to moisture and numerous chemicals.

The Bulletin 802MC switch also capitalizes on the corrosion-resistant properties of the operating shaft and operating head mounting screws, which are made of Type 316 stainless steel.

The basic switching mechanism has double-throw, double-break, snap-action contacts with minimum contact bounce. The switch is pre-wired and factory sealed with "STO" ^❶ cable. An optional mini-type or micro-type receptacle can also be supplied. Refer to Modifications on page 5-27 and 5-33.

Installation

Although physically smaller, the Bulletin 802M switch can be interchanged with a Bulletin 802T front mounted lever operated switch by using the mounting foot adaptor included (see dimensions on page 5-18). Cam tracking

^❶ STO is a common identification of this cable. The more complete identification of the cable used on the Bulletin 802M is ST00W-A which incorporates an oil resistant jacket and conductor insulation, for indoor and outdoor use.

characteristics from the top mounting hole of the Bulletin 802M and 802MC switch are identical to the Bulletin 802T nonplug-in rotary operated switch line.

Time saving factory pre-wiring makes the switch economical to use. There is no need to purchase a separate cable grip or cable because internal wiring by the installer is eliminated. Merely connect the STO cable to a junction box. Since the switch body is nonmetallic, no ground wire is required for the switch.

Lever Type Switches

These switches are operated by means of a lever which is clamped to a knurled shaft extending from the operating head. These devices can be easily field converted to clockwise, counterclockwise, or both directions of operation without any loose parts. Total travel is 86° in either direction. Operating heads are interchangeable and can be mounted in any of four positions 90° apart for maximum flexibility. The head is interlocked with the base unit to resist accidental shearing.

Lever type switches can be equipped with a variety of operating levers: roller lever, adjustable roller lever, micrometer adjustment roller lever, rod lever, one-way rod or roller lever and fork lever.

Push Type Switches

These switches are actuated by means of a rod or plunger located on the top or side of the operating unit. Pushing the plunger into the head causes the contacts to operate. Two types of plungers are available: rod and roller. Push type switches are supplied in spring return construction.

802M

Pre-Wired—Factory Sealed Switches



Description

The Bulletin 802M compact pre-wired limit switch is factory sealed to meet the demanding requirements for NEMA 1, 4, 6P and 13 enclosures. Outstanding features designed into the switch make it ideal for wet environments and washdown applications.

A wide variety of operating heads and operating levers are available. Operating heads can be mounted in four positions, 90° apart.

Applications

The Bulletin 802M is designed for dry and wet applications. The superior sealing system has been developed to protect against dust, dirt, and fluids normally found in industrial environments. The device has passed harsh environmental testing such as alternately drenching with a liquid and exposing to dust and abrasive grit with the switch operating 250 times per minute.

Specifications

| | |
|------------------------------------|---|
| Enclosure Rating | NEMA 1, 4, 6P, 13 and IP67 |
| Pollution Degree | 3 |
| Certifications | UL Listed, CSA Certified and CE Marked for applicable directives |
| Ambient Temperature [C (F)] | 0...+80° (+32...+18°) minimum temperature based on the absence of freezing moisture or water. |

AC Contact Rating (Maximum per Pole, 50 or 60Hz, 2 Circuits Same Polarity)

| NEMA Rating Designation | Max Voltage | A | | Continuous Carrying Current | VA | |
|-------------------------|-------------|------|-------|-----------------------------|------|-------|
| | | Make | Break | | Make | Break |
| A600 AC-15 | 120 | 60 | 6.00 | 10 | 7200 | 720 |
| | 240 | 30 | 3.00 | 10 | 7200 | 720 |
| | 480 | 15 | 1.50 | 10 | 7200 | 720 |
| | 600 | 12 | 1.20 | 10 | 7200 | 720 |

AC Contact Rating (Maximum per Pole, 50 or 60Hz, 4 Circuits Same Polarity)

| NEMA Rating Designation | Max Voltage | A | | Continuous Carrying Current | VA | |
|-------------------------|-------------|------|-------|-----------------------------|------|-------|
| | | Make | Break | | Make | Break |
| B300 | 120 | 30 | 3.00 | 5 | 3600 | 360 |
| | 240 | 15 | 1.50 | 5 | 3600 | 360 |

DC Contact Rating (Maximum per Pole, 2 Circuits Same Polarity)

| NEMA Rating Designation | Nominal Voltage | A | | Continuous Carrying Current (A) |
|-------------------------|-----------------|------|-------|---------------------------------|
| | | Make | Break | |
| | 24 | | 1.1 | 5 |

The switch is often used in applications subject to washdowns, streams of coolant, or occasionally submerged in fluids commonly found on machines or in industrial processes. This limit switch is being used successfully in High Water Content Fluid (HWCF) applications. Contact your local Rockwell Automation sales office or Allen-Bradley distributor for applications where potentially corrosive fluids are of a particular concern.

Features

- Pre-wired and factory sealed
- Corrosion-resistant housings
- Corrosion-resistant hardware (802MC)
- Side rotary, adjustable top and top or side push styles with and without rollers
- Double-break fine silver contacts

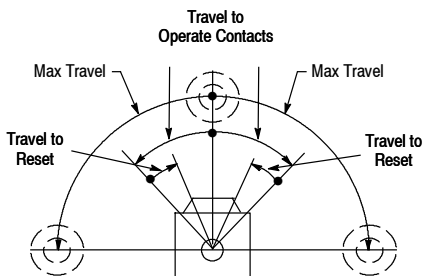
Pre-Wired—Factory Sealed

- Lever Type • Spring Return page 5-17
- Lever Type Neutral page 5-19
- Position • Spring Return
- Lever Type • Maintained . . . page 5-20
- Contact
- Lever Type Sequential • . . page 5-21
- Spring Return
- Push Type • Spring Return . page 5-22
- Wiring Diagrams page 5-24
- Modifications page 5-27
- Accessories page 5-29

802M Lever Type • Spring Return

Pre-Wired—Factory Sealed Switches

Range of Operation



Complete Switch Without Lever



Operator Head Only



Switch Body Only

Product Selection

| No. of Circuits | Lever Movement vs. Contact Operation | | Torque to Operate (Max.) | Travel to Operate Contacts (Max.) | Max Travel | Travel to Reset Contacts (Max.) | Cat. No. | | |
|-----------------|--------------------------------------|--|--------------------------|-----------------------------------|------------|---------------------------------|-----------------------------|--------------------|--------------------|
| | | | | | | | Complete Switch w/o Lever ① | Operator Head Only | Switch Body Only ② |
| 2 | Clockwise or Counterclockwise | | 0.34 N•m (3 lb•in) | 15° | 86° | 6° | 802M-AY5 | 802M-AX | 802M-XY5 |
| | | | 0.56 N•m (5 lb•in) | 8° | | 4° | 802M-HY5 | 802M-HX | |
| | Clockwise | | 0.34 N•m (3 lb•in) | 15° | | 6° | 802M-A1Y5 | 802M-A1X | |
| | | | 0.56 N•m (5 lb•in) | 8° | | 4° | 802M-H1Y5 | 802M-H1X | |
| | Counterclockwise | | 0.34 N•m (3 lb•in) | 15° | | 6° | 802M-A2Y5 | 802M-A2X | |
| | | | 0.56 N•m (5 lb•in) | 8° | | 4° | 802M-H2Y5 | 802M-H2X | |
| 4 | Clockwise or Counterclockwise | | 0.34 N•m (3 lb•in) | 15° | 6° | 802M-ATY5 | 802M-AX | 802M-XTY5 | |
| | | | 0.56 N•m (5 lb•in) | 8° | 4° | 802M-HTY5 | 802M-HX | | |
| | Clockwise | | 0.34 N•m (3 lb•in) | 15° | 6° | 802M-A1TY5 | 802M-A1X | | |
| | | | 0.56 N•m (5 lb•in) | 8° | 4° | 802M-H1TY5 | 802M-H1X | | |
| | Counterclockwise | | 0.34 N•m (3 lb•in) | 15° | 6° | 802M-A2TY5 | 802M-A2X | | |
| | | | 0.56 N•m (5 lb•in) | 8° | 4° | 802M-H2TY5 | 802M-H2X | | |

① The standard length of STO cable is 1.52 m (5 ft). For other lengths see Modifications and Accessories.

Levers—See page 5-130 for a complete listing of operating levers.

Wiring Diagrams—See page 5-24.

Modifications and Accessories—See page 5-27.

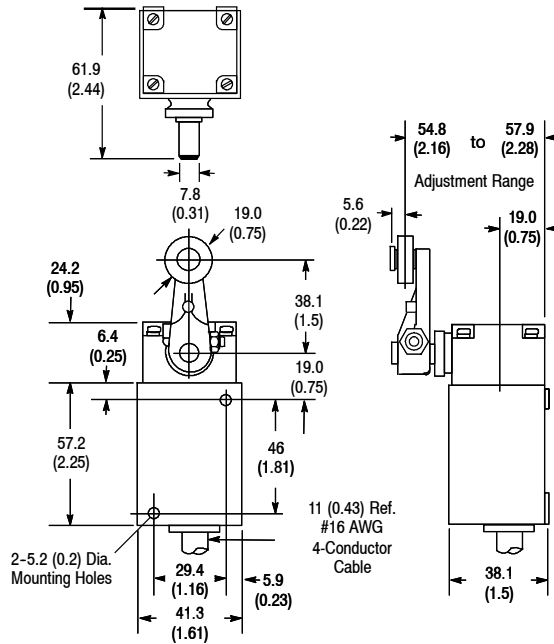
Limit Switches

802M Lever Type • Spring Return

Pre-Wired—Factory Sealed Switches

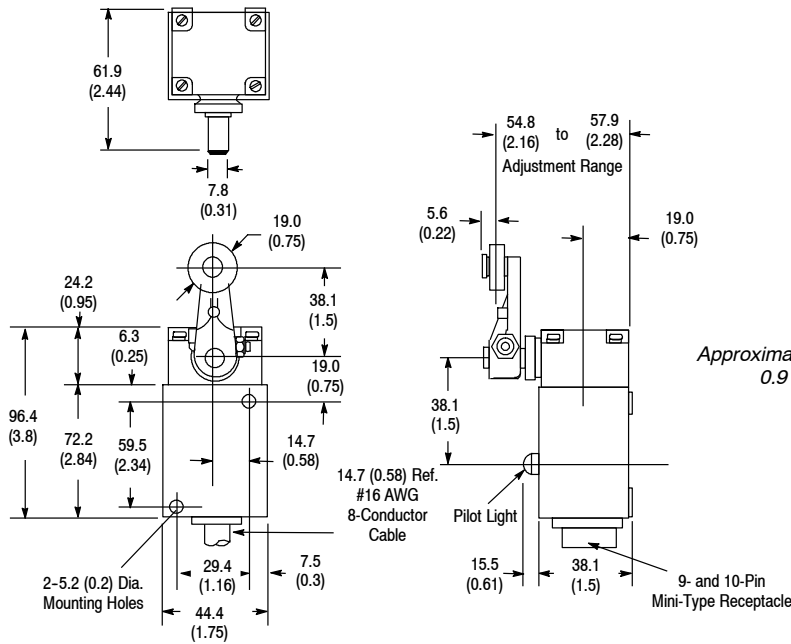
Approximate Dimensions [mm (in.)]

2-Circuit



Shipping Wt.
1lb 0.53 kg (3 oz)

4-Circuit



Approximate Shipping Wt.
0.9 kg (2 lb)

Note: Mounting foot adaptor as shown on page 5-23 is for use with 2-circuit 802M type switches only.

Levers—See page 5-130 for a complete listing of operating levers.

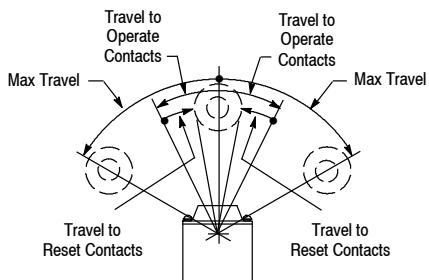
Wiring Diagrams—See page 5-24.

Modifications and Accessories—See page 5-27.

802M Lever Type Neutral Position • Spring Return

Pre-Wired—Factory Sealed Switches

Range of Operation



Complete Switch Without Lever



Operator Head Only



Switch Body Only

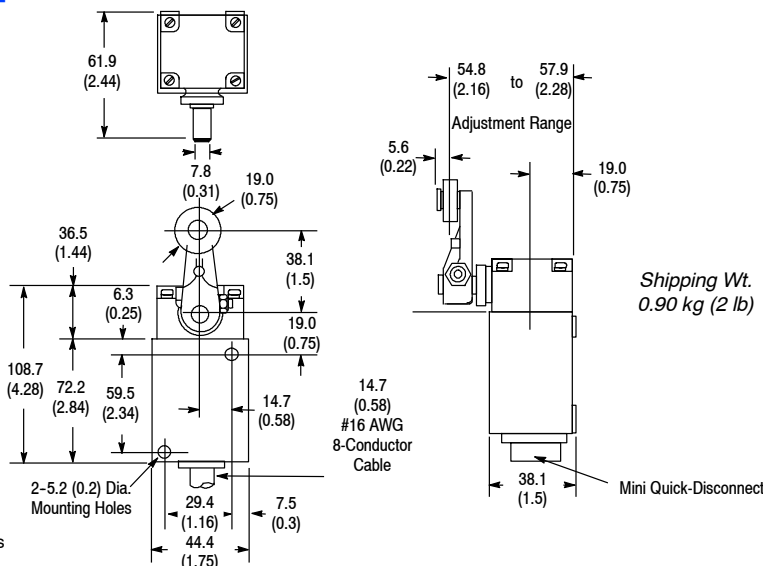
Product Selection

| No. of Circuits | Lever Movement vs. Contact Operation | Torque to Operate (Max) | | Travel to Operate Contacts (Max) | Max Travel | Travel to Reset Contacts (Max) | Cat. No. | | |
|-----------------|--------------------------------------|-------------------------|-------------------------|----------------------------------|------------|--------------------------------|------------------------------|----------------------|--------------------|
| | | CW | CCW | | | | Complete Switch w/o Lever ①② | Operator Head Only ② | Switch Body Only ① |
| 4 | | 7 lb•in (0.79 N•m) | 7.5 lb•in (0.85 N•m) | 16° | 75° | 7° | 802M-NPY5 | 802M-NPX | 802M-XNPY5 |

① The standard length of STO cable is 1.52 m (5 ft). For other lengths see Modifications and Accessories.

② Operating lever 802T-W3F should not be used with this switch.

Approximate Dimensions [mm (in.)]



Note: Mounting foot adaptor as shown on page 5-23 is for use with 2-circuit 802M type switches only.

Levers—See page 5-130 for a complete listing of operating levers.

Wiring Diagrams—See page 5-24

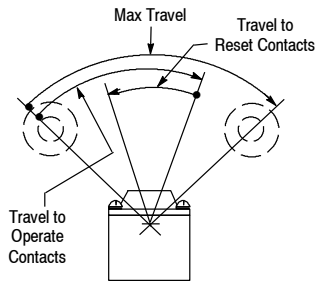
Modifications and Accessories—See page 5-27.

Limit Switches

802M Lever Type • Maintained Contact

Pre-Wired—Factory Sealed Switches

Range of Operation



Complete Switch
Without Lever



Operator Head
Only



Switch Body Only

Product Selection

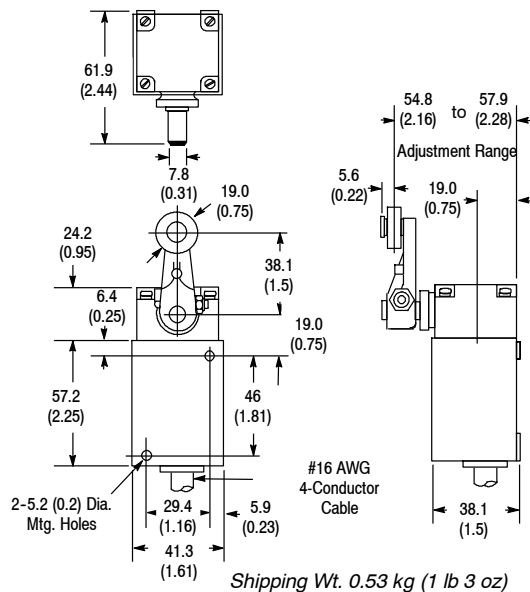
| No. of Circuits | Lever Movement vs. Contact Operation | | Torque to Operate (Max.) | Travel to Operate Contacts (Max.) [Ⓜ] | Max Travel [Ⓜ] | Travel to Reset Contacts (Max.) | Cat. No. | | |
|-----------------|--------------------------------------|--|--------------------------|--|-------------------------|---------------------------------|--|--------------------|-------------------------------|
| | | | | | | | Complete Switch w/o Lever [Ⓛ] | Operator Head Only | Switch Body Only [Ⓛ] |
| 2 | Clockwise or Counterclockwise | | 0.31 N•m (2.75 lb•in) | 75° | 87° | 35° | 802M-AMY5 | 802M-AMX | 802M-XY5 |
| 4 | Clockwise or Counterclockwise | | | | | | 802M-AMTY5 | | 802M-XTY5 |

[Ⓛ] The standard length of STO cable is 1.52 m (5 ft). For other lengths see Modifications and Accessories.

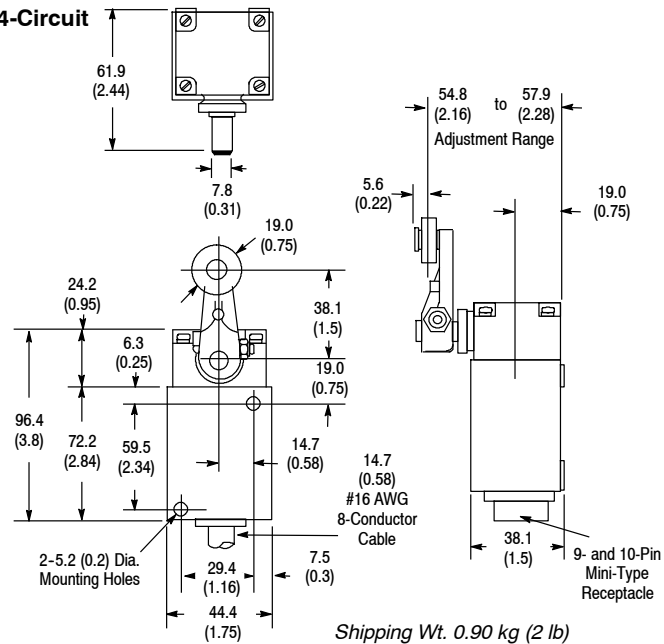
[Ⓜ] From one maintained position to the other.

Approximate Dimensions [mm (in.)]

2-Circuit



4-Circuit



Levers—See page 5-130 for a complete listing of operating levers.

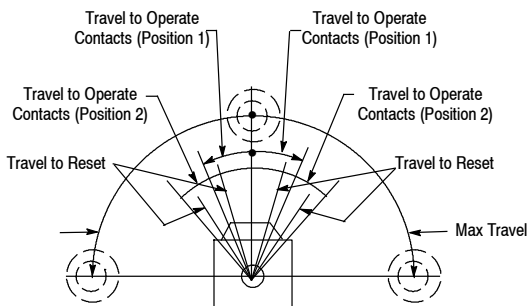
Wiring Diagrams—See page 5-24.

Modifications and Accessories—See page 5-27.

802M Lever Type Sequential • Spring Return

Pre-Wired—Factory Sealed Switches

Range of Operation



Complete Switch Without Lever



Operator Head Only



Switch Body Only

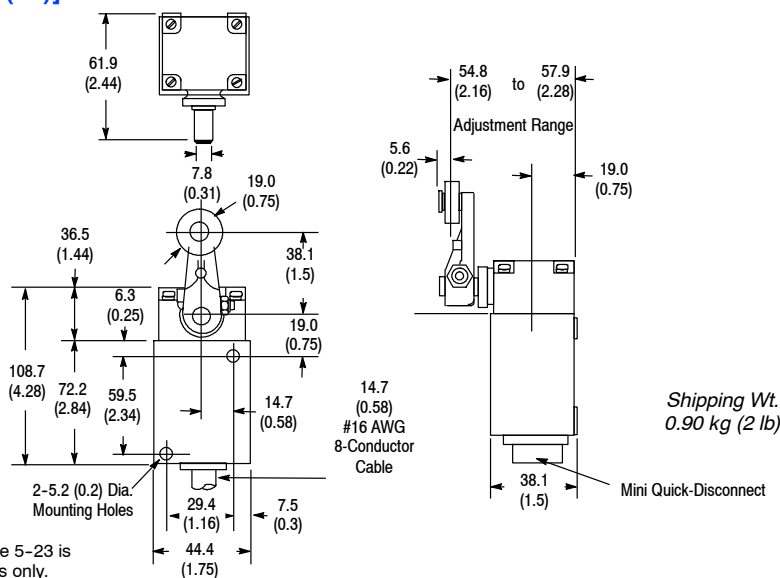
Product Selection — 4-Circuit

| Lever Movement vs. Contact Operation | Position 1 | Position 2 | To Max Travel | Position 1 | Position 2 | Max Travel | Travel to Reset Contacts (Max.) | Cat. No. | | |
|--|--------------------|-------------------|---------------|------------|------------|------------|---------------------------------|------------------------------|----------------------|--------------------|
| | | | | | | | | Complete Switch w/o Lever ①② | Operator Head Only ② | Switch Body Only ① |
| <p>Counterclockwise</p> <p>Clockwise</p> | 0.79 N•m (7 lb•in) | 0.9 N•m (8 lb•in) | | 10°± 3° | 20°± 3° | 88° | 4°± 3° | 802M-ASY5 | 802M-ASX | 802M-XSY5 |

① The standard length of STO cable is 1.52 m (5 ft). For other lengths see Modifications and Accessories.

② Operating lever 802T-W3F should not be used with this switch.

Approximate Dimensions [mm (in.)]



Note: Mounting foot adaptor as shown on page 5-23 is for use with 2-circuit 802M type switches only.

Levers—See page 5-130 for a complete listing of operating levers.

Wiring Diagrams—See page 5-24.

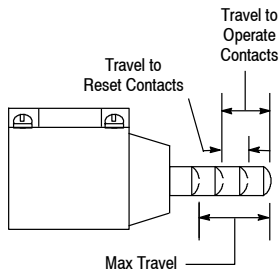
Modifications and Accessories—See page 5-27.

Limit Switches

802M Push Type • Spring Return

Pre-Wired—Factory Sealed Switches

Range of Operation



Product Selection

| No. of Circuits | Operator Type | Contact Operation | | Force to Operate (Max) | Travel to Operate Contacts (Max) | Max Travel | Travel to Reset Contacts (Max) | Cat. No. | | | | | | | | | | | | | | | | | | |
|-----------------------------|-------------------------|---|---------------------|------------------------|----------------------------------|---------------------|---|-------------------|--------------------|--------------------|---|---------------|---------------------|---------------------|---------------------|-----------|-----------|-----------|-----------|-----------------|---------------------|---------------------|----------------------|-----------|---------|-----------|
| | | Normal | Operated | | | | | Complete Switch ❶ | Operator Head Only | Switch Body Only ❶ | | | | | | | | | | | | | | | | |
| 2 | Top Push Rod | <table border="1"> <tr> <td>1 ○ ○ 2</td> <td>1 ○ ○ 2</td> </tr> <tr> <td>3 ○ ○ 4</td> <td>3 ○ ○ 4</td> </tr> </table> | 1 ○ ○ 2 | 1 ○ ○ 2 | 3 ○ ○ 4 | 3 ○ ○ 4 | <table border="1"> <tr> <td>1 ○ ○ 2</td> <td>1 ○ ○ 2</td> </tr> <tr> <td>3 ○ ○ 4</td> <td>3 ○ ○ 4</td> </tr> </table> | 1 ○ ○ 2 | 1 ○ ○ 2 | 3 ○ ○ 4 | 3 ○ ○ 4 | 13.3 N (3 lb) | 1.45 mm (0.057 in.) | 5.26 mm (0.207 in.) | 0.56 mm (0.022 in.) | 802M-BY5 | 802M-BX | 802M-XY5 | | | | | | | | |
| | 1 ○ ○ 2 | | 1 ○ ○ 2 | | | | | | | | | | | | | | | | | | | | | | | |
| | 3 ○ ○ 4 | | 3 ○ ○ 4 | | | | | | | | | | | | | | | | | | | | | | | |
| | 1 ○ ○ 2 | | 1 ○ ○ 2 | | | | | | | | | | | | | | | | | | | | | | | |
| | 3 ○ ○ 4 | | 3 ○ ○ 4 | | | | | | | | | | | | | | | | | | | | | | | |
| | Adjustable Top Push Rod | | 802M-BAY5 | 802M-BAX | | | | | | | | | | | | | | | | | | | | | | |
| | Side Push Rod | | 20 N (4.5 lb) | 2.59 mm (0.102 in.) | 5.16 mm (0.203 in.) | 1.14 mm (0.045 in.) | | 802M-CY5 | 802M-CX | | | | | | | | | | | | | | | | | |
| Top Push Roller | 14.7 N (3.3 lb) | 1.45 mm (0.057 in.) | 5.26 mm (0.207 in.) | 0.56 mm (0.022 in.) | 802M-DY5 | 802M-DX | | | | | | | | | | | | | | | | | | | | |
| Side Push Vertical Roller | 20 N (4.5 lb) | 2.59 mm (0.102 in.) | 5.1 mm (0.203 in.) | 1.14 mm (0.045 in.) | 802M-KY5 | 802M-KX | | | | | | | | | | | | | | | | | | | | |
| Side Push Horizontal Roller | | | | | 802M-K1Y5 | 802M-K1X | | | | | | | | | | | | | | | | | | | | |
| Adjustable Side Push Rod | | | | | 802M-CAFY5 | 802M-CAFX | | | | | | | | | | | | | | | | | | | | |
| 4 | Top Push Rod | <table border="1"> <tr> <td>1 ○ ○ 2</td> <td>1 ○ ○ 2</td> </tr> <tr> <td>3 ○ ○ 4</td> <td>3 ○ ○ 4</td> </tr> <tr> <td>5 ○ ○ 6</td> <td>5 ○ ○ 6</td> </tr> <tr> <td>7 ○ ○ 8</td> <td>7 ○ ○ 8</td> </tr> </table> | 1 ○ ○ 2 | 1 ○ ○ 2 | 3 ○ ○ 4 | 3 ○ ○ 4 | 5 ○ ○ 6 | 5 ○ ○ 6 | 7 ○ ○ 8 | 7 ○ ○ 8 | <table border="1"> <tr> <td>1 ○ ○ 2</td> <td>1 ○ ○ 2</td> </tr> <tr> <td>3 ○ ○ 4</td> <td>3 ○ ○ 4</td> </tr> <tr> <td>5 ○ ○ 6</td> <td>5 ○ ○ 6</td> </tr> <tr> <td>7 ○ ○ 8</td> <td>7 ○ ○ 8</td> </tr> </table> | 1 ○ ○ 2 | 1 ○ ○ 2 | 3 ○ ○ 4 | 3 ○ ○ 4 | 5 ○ ○ 6 | 5 ○ ○ 6 | 7 ○ ○ 8 | 7 ○ ○ 8 | 13.3 N (3.5 lb) | 1.45 mm (0.057 in.) | 5.13 mm (0.202 in.) | 0.076 mm (0.030 in.) | 802M-BTY5 | 802M-BX | 802M-XTY5 |
| | 1 ○ ○ 2 | | 1 ○ ○ 2 | | | | | | | | | | | | | | | | | | | | | | | |
| | 3 ○ ○ 4 | | 3 ○ ○ 4 | | | | | | | | | | | | | | | | | | | | | | | |
| | 5 ○ ○ 6 | | 5 ○ ○ 6 | | | | | | | | | | | | | | | | | | | | | | | |
| | 7 ○ ○ 8 | | 7 ○ ○ 8 | | | | | | | | | | | | | | | | | | | | | | | |
| | 1 ○ ○ 2 | | 1 ○ ○ 2 | | | | | | | | | | | | | | | | | | | | | | | |
| | 3 ○ ○ 4 | | 3 ○ ○ 4 | | | | | | | | | | | | | | | | | | | | | | | |
| 5 ○ ○ 6 | 5 ○ ○ 6 | | | | | | | | | | | | | | | | | | | | | | | | | |
| 7 ○ ○ 8 | 7 ○ ○ 8 | | | | | | | | | | | | | | | | | | | | | | | | | |
| Adjustable Top Push Rod | 802M-BATY5 | 802M-BAX | | | | | | | | | | | | | | | | | | | | | | | | |
| Side Push Rod | 20 N (4.5 lb) | 3.18 mm (0.125 in.) | 5.54 mm (0.218 in.) | 1.14 mm (0.045 in.) | 802M-CTY5 | 802M-CX | | | | | | | | | | | | | | | | | | | | |
| Top Push Roller | 14.7 N (3.5 lb) | 1.45 mm (0.057 in.) | 5.13 mm (0.202 in.) | 0.076 mm (0.030 in.) | 802M-DTY5 | 802M-DX | | | | | | | | | | | | | | | | | | | | |
| Side Push Vertical Roller | 20 N (4.5 lb) | 3.18 mm (0.125 in.) | 5.54 mm (0.218 in.) | 1.14 mm (0.045 in.) | 802M-KTY5 | 802M-KX | | | | | | | | | | | | | | | | | | | | |
| Side Push Horizontal Roller | | | | | 802M-K1TY5 | 802M-K1X | | | | | | | | | | | | | | | | | | | | |
| Adjustable Side Push Rod | | | | | 802M-CAFTY5 | 802M-CAFX | | | | | | | | | | | | | | | | | | | | |

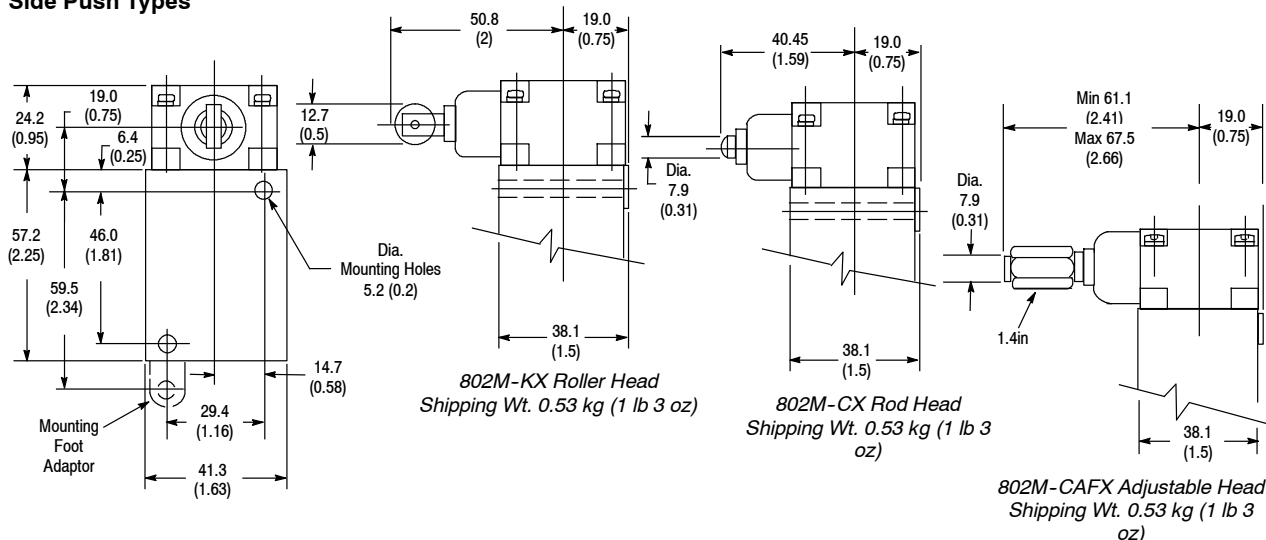
❶ The standard length of STO cable is 1.52 m (5 ft). For other lengths see Modifications and Accessories.

Wiring Diagrams—See page 5-24.

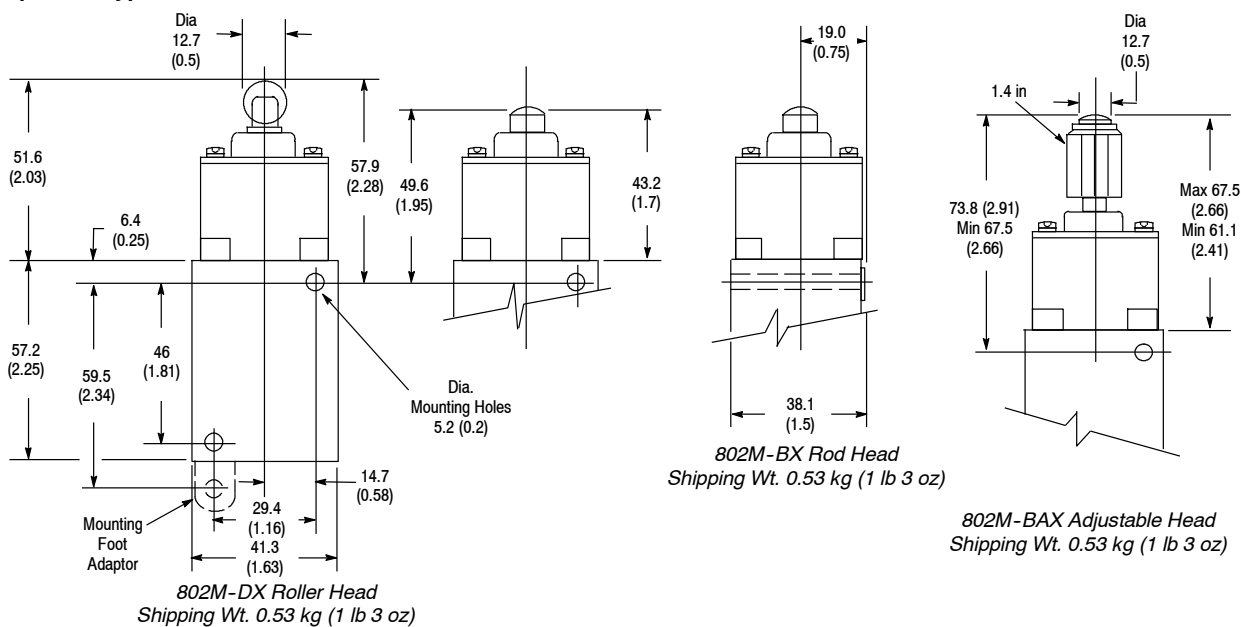
Modifications and Accessories—See page 5-27.

Approximate Dimensions [mm (in.)]

Side Push Types



Top Push Types



Note: Mounting foot adaptor as shown above is for use with 2-circuit 802M type switches only.

Wiring Diagrams—See page 5-24.

Modifications and Accessories—See page 5-27.

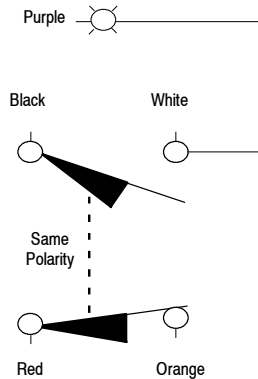
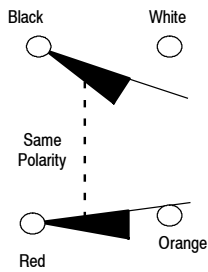
Limit Switches

802M Wiring Diagrams for 2-Circuit Models

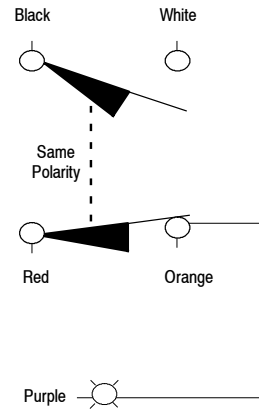
Pre-Wired—Factory Sealed Switches

Cable Models

(See Applicable Codes and Laws)



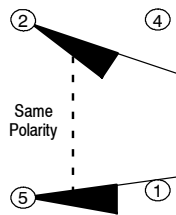
Light Wired to N.O. (White) Wire



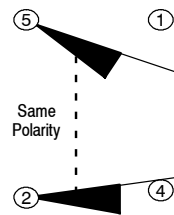
Light Wired to N.C. (Orange) Wire

5-Pin Mini-Type Receptacle

“J1” Wiring

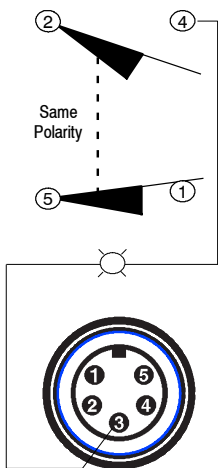


“J9” Wiring

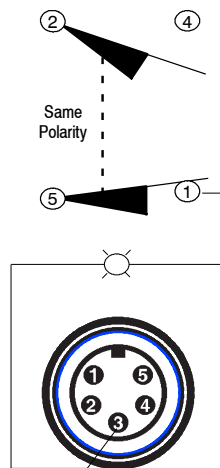


5-Pin Mini-Type Receptacle with One Indicating Light

“J1” Wiring

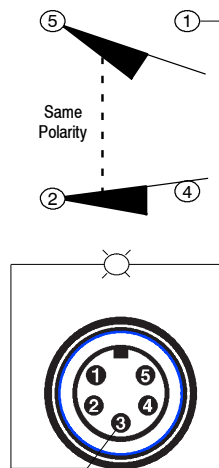


Light Wired to N.O.

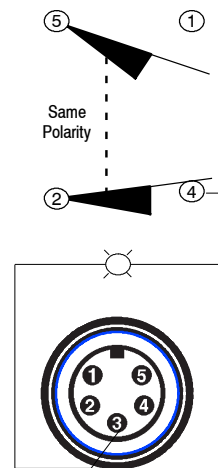


Light Wired to N.C.

“J9” Wiring



Light Wired to N.O.

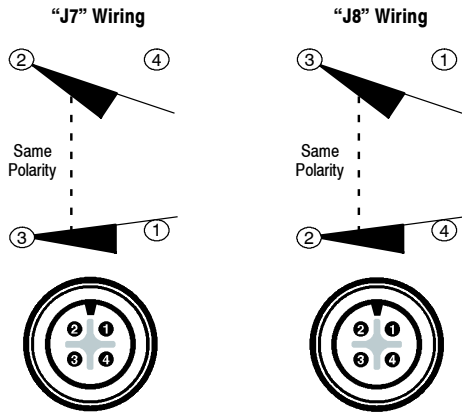


Light Wired to N.C.

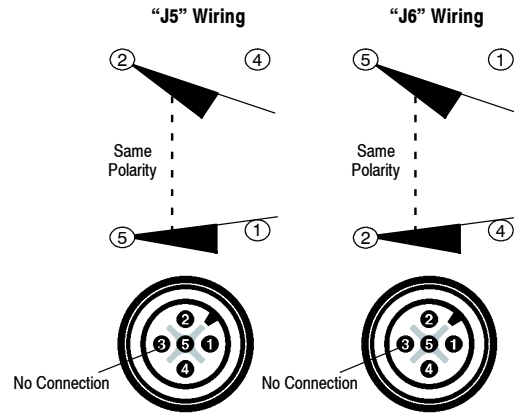
802M Wiring Diagrams for 2-Circuit Models

Pre-Wired—Factory Sealed Switches

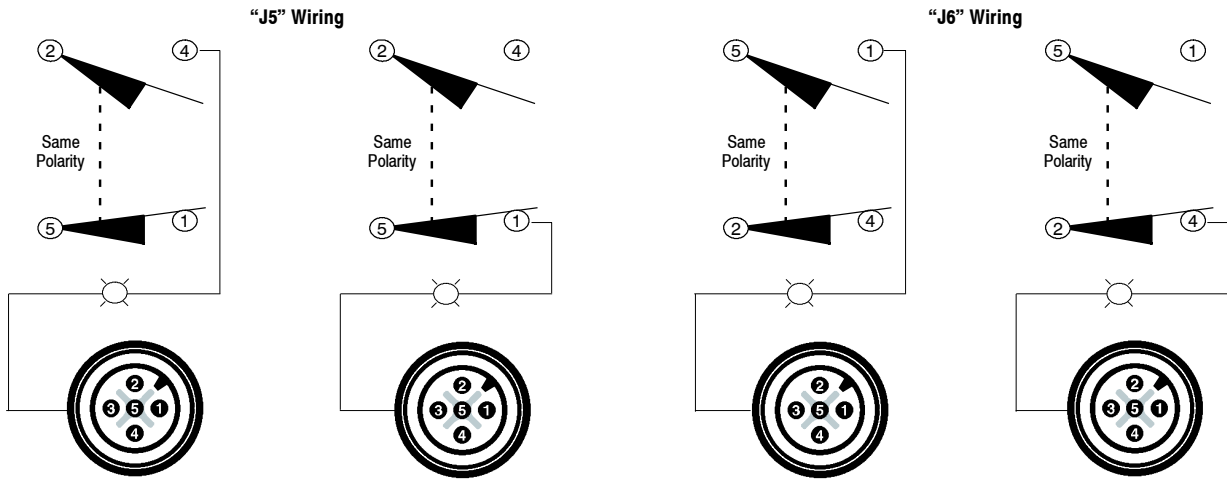
4-Pin Micro-Type Receptacle (DC only)



5-Pin Micro-Type Receptacle (DC only)



5-Pin Micro-Type Receptacle with One Indicating Light (DC only)



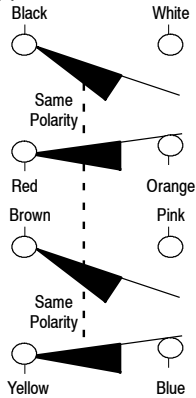
Limit Switches

802M Wiring Diagrams for 4-Circuit Models

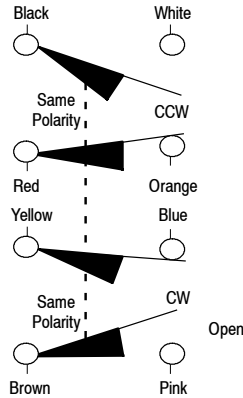
Pre-Wired—Factory Sealed Switches

Cable Models

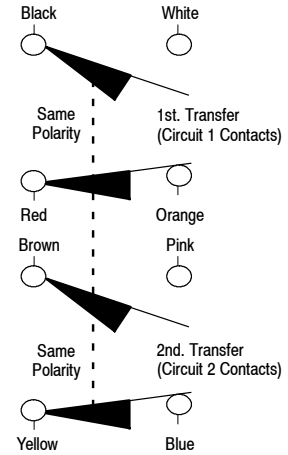
(See Applicable Codes and Laws)



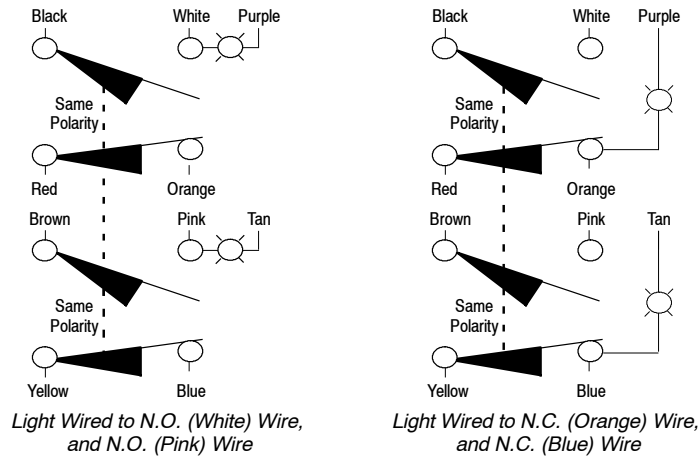
Neutral Position with Cable



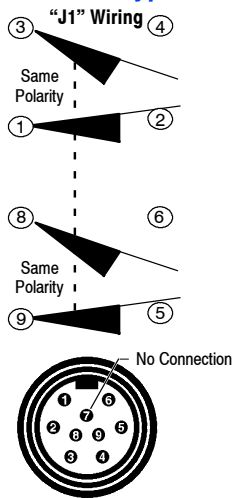
Sequential with Cable



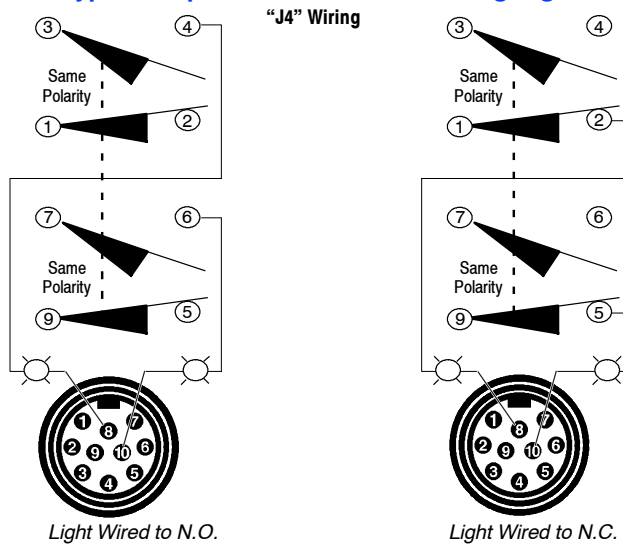
Cable Models with Two Indicating Lights



9-Pin Mini-Type Receptacle



10-Pin Mini-Type Receptacle with Two Indicating Lights



802M Modifications

Pre-Wired—Factory Sealed Switches

24V DC Switches

All two-circuit 802M limit switches are available with silver-nickel contacts rated for 24V DC applications. To order a switch rated for 24V DC use, insert the letter **Z** before the cable or connector designation. Example: 802M-AZY5 is a 24V DC version of the 802M-AY5. The use of the 24V DC micro connector option or 24V DC indicating light option require the switch be rated for 24V DC operation.

Extended Cable Lengths

The factory installed type STO cable is normally supplied in 1.52 m (5 ft) lengths. Extended cable lengths are available in multiples of four feet. To order, replace the suffix **Y5** in the cat. no. with the appropriate suffix from the table below. Example: To order a lever type two-circuit spring return switch with 1.83 m (8 ft) of STO cable the cat. no. would be 802M-AY8.

| Additional Cable Length | |
|-------------------------|--------------------|
| Modification | Cat. Number Suffix |
| 1.83 m (8 ft) Cable | Y8 |
| 3.66 m (12 ft) Cable | Y12 |
| 4.78 m (16 ft) Cable | Y16 |

5-Pin Mini-Type Receptacle^①
(2-Circuit Models Only)

802M with Mini-Type Receptacle
2-Circuit

To order a Bulletin 802M pre-wired limit switch with a 5-pin mini connector in place of the 1.52 m (5 ft) of “STO”^② cable, replace the **Y5** in the cat. no. with the suffix **J1** or **J9** depending upon the wiring configuration required. Maximum voltage rating for this receptacle is 250V AC.

An appropriate female connector with cable (889N-F5AFC-6F) is available on page 8-4 in Connection Systems.

9-Pin Mini-Type Receptacle^①
(4-Circuit Models without Indicator Lights Only)

802M with Mini-Type Receptacle
4-Circuit

To order a Bulletin 802M pre-wired limit switch with a 9-pin mini connector in place of the 1.52 m (5 ft) of STO cable, replace the **Y5** in the cat. no. with the suffix **J1**. Maximum voltage rating for this receptacle is 250V AC.

An appropriate female connector with cable (889N-F9AF-2) is available on page 8-14 in Connection Systems.

10-Pin Mini-Type Receptacle^①
(4-Circuit Models with 2 Indicating Lights Only)

To order a Bulletin 802M pre-wired limit switch with a 10-pin mini connector and two indicating lights, replace the **Y5** in the cat. no. with the suffix **J4**. Maximum voltage rating for this receptacle is 250V AC. Also, specify the indicating lights per the table on page 5-28.

Example: Cat. No. 802M-ATY5 with mini-connector and (2) 120V AC indicating lights wired to one side of each N.O. contact would be Cat. No. 802M-ATJ4L1F.

An appropriate female connector with cable (889N-F10AF-2) is available on page 8-14 in Connection Systems.

4-Pin Micro-Type Receptacle
(2-Circuit 24V DC Models Only)

802M with Micro-Type
Receptacle—2-Circuit

To order a Bulletin 802M pre-wired limit switch with a 4-pin micro connector in place of the 1.52 m (5 ft) of “STO”^② cable, replace the **Y5** in the cat. no. with the suffix **J7** or **J8** depending upon the wiring configuration required. This option requires that the switch is rated 24V DC.

An appropriate female connector with cable (889D-F4AC-2) is available on page 8-16 in Connection Systems.

5-Pin Micro-Type Receptacle
(2-Circuit 24V DC Models Only)

To order a Bulletin 802M pre-wired limit switch with a 5-pin micro connector in place of the 1.52 m (5 ft) of “STO”^② cable, replace the **Y5** in the cat. no. with the suffix **J5** or **J6** depending upon the wiring configuration required. This option requires that the switch is rated 24V DC.

An appropriate female connector with cable (889D-F5AC-2) is available on page 8-16 in Connection Systems.

① A 5-pin, 9-pin or 10-pin plug-in receptacle is supplied to facilitate retrofitting existing installations. The normal ground wire pin is not required and is not connected inside the switch.

② STO is a common identification of this cable. The more complete identification of the cable used on the Bulletin 802M is ST00W-A which incorporates an oil resistant jacket and conductor insulation, for indoor and outdoor use.

802M Modifications

Pre-Wired—Factory Sealed Switches

Indicating Lights



802M with Indicating Light
2-Circuit

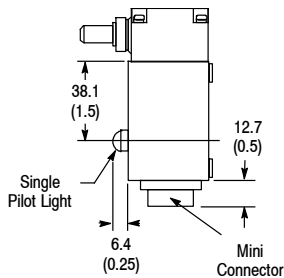


802M with Indicating Lights
4-Circuit

2-Circuit—Bulletin 802M pre-wired limit switches can be supplied with an indicating light which is wired to one side of either the N.O. or N.C. contact. The second lead of the light is available as a fifth conductor for wiring flexibility. See pages 5-24 through 5-25 for wiring diagrams.

To order, add the appropriate suffix listed in the table to the right to the cat. no. Example: Cat. No. 802M-AY5 with a 120V AC LED indicating light wired to one side of the N.O. contact would be Cat. No. 802M-AY5L1F.

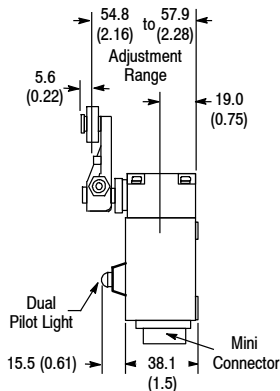
Example: Cat. No. 802M-AY5 with mini-connector and 120V AC indicating light wired to one side of the N.O. contact would be Cat. No. 802M-AJ1L1F.



4-Circuit—Bulletin 802M pre-wired limit switches can be supplied with 2 indicating lights wired to one side of each N.O. or N.C. contact of the 4-circuit contact block. Second leads from each light are available as ninth and tenth conductors for wiring flexibility. See page 5-26 for wiring diagram.

To order, add the appropriate suffix listed in the table to the right to the cat. no.

Example: Cat. No. 802M-ATY5 with 120V AC LED indicating lights wired to one side of each N.C. contact would be Cat. No. 802M-ATY5L1C.



LED Indicating Lights

| Voltage | Wired to ❶ | Cat. No. Suffix |
|--------------------|--------------|-----------------|
| 24V DC ❷ | N.O. Contact | LF |
| | N.C. Contact | LC |
| 120V AC 50-60Hz | N.O. Contact | L1F |
| | N.C. Contact | L1C |

Neon Indicating Lights

| Voltage | Wired to ❶ | Cat. No. Suffix |
|--------------------|--------------|-----------------|
| 120V AC 50-60Hz | N.O. Contact | NF |
| | N.C. Contact | NC |
| 240V AC 50-60Hz | N.O. Contact | N5F |
| | N.C. Contact | N5C |

Fitting for Liquid-Tight Flexible Metal Conduit

802M 2-circuit switches can be obtained provided with a fitting for liquid-tight flexible metal conduit (flexible metal conduit not provided) and a pigtail for wiring. Add the following suffix to the cat. no. (dashes indicate pigtail length):

- GS** _ straight-out fitting
- GF** _ front oriented 90° elbow fitting
- GL** _ left oriented 90° elbow fitting
- GB** _ back oriented 90° elbow fitting
- GR** _ right oriented 90° elbow fitting.

Example: GS5=5 foot long pigtail. Additional cable length over 1.5 m (5 ft) is available in multiples of 1.2 m (4 ft).

❶ See wiring diagrams page 5-24...5-26.

❷ Requires the switch be rated for 24V DC operation.

Adaptor Foot

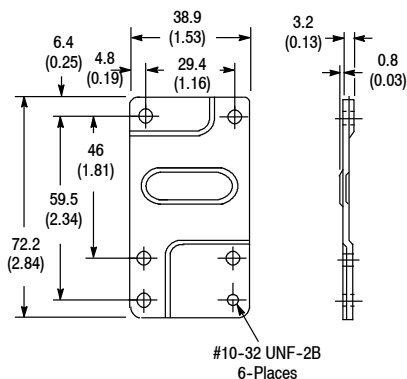
To mount a 2-circuit 802M in the same 1.16 in. x 2.34 in. mounting hole pattern as an 802T, an adaptor foot is required and is included with each 802M as shipped. This accessory is made of steel and is chromate plated to resist corrosion. To obtain replacement adaptor feet, order Cat. No. 40246-008-02.

Rear Mounting Adaptor Kit

For rear mounting of 2-circuit or 4-circuit Bulletin 802M pre-wired limit switch (not suitable for use on Bulletin 802MC).

Kit includes mounting plate and two screws for mounting adaptor plate to switch. To mount to surface from rear use two #10-32 screws. Select proper screw length to pass through adaptor plate without bottoming against back of limit switch.

Order Cat. No. 802M-N1.



Approximate Shipping Wt. 0.2 kg (8 oz)