



Trip-Block ZMR/ZMRW-PKZ2



Powering Business Worldwide™

Part no.
Article no.

ZMR-10-PKZ2
033967

Delivery programme

Product range			Accessories: PKZ2 System - PRODUCT DISCONTINUATION IN 2012
Accessories			Trip blocks
			with overload/relay function, with manual/automatic position
Motor ratings			
Max. motor rating			
AC-3			
220 V 230 V	P	kW	2.2
380 V 400 V 415 V			
380 V 400 V	P	kW	4
380 V 400 V 415 V			
380 V 400 V 415 V	P	kW	3 4
440 V	P	kW	4
500 V	P	kW	3 4
500 V	P	kW	5.5
660 V 690 V			
660 V 690 V	P	kW	7.5
Rated operational current			
400 V	I_e	A	6.6 8.5
500 V	I_e	A	6.8 9
Rated uninterrupted current	I_u	A	10
Setting range			
Setting range of overload releases	I_r	A	6-10
Short-circuit releases	I_{rm}	A	80 - 140
Overload releases	I_r	A	6 - 10
Contact sequence			

Notes

When using the M-...-PKZ2 for short-circuit protection of motors with heavy-duty starting, the rated operating current I_n must be oversized by the following factors in the course of the project engineering:

CLASS	Factor
5	1.0
10	1.0
15	1.22
20	1.41
25	1.58
30	1.73
35	1.89
40	2.0

Notes

Phase-failure sensitivity and overload/short-circuit release setting options and PTB, see above.

When using motor-protective trip blocks with an overload relay function, the motor-protective circuit-breaker does not trip in the event of an overload. The overload indication is produced by means of two auxiliary contacts. Different potentials may be applied to the two auxiliary contacts.

Notes Motor Protection Trip Module with overload relay function

Pilot Duty: D300, R300

General Purpose: 1.5 A 240 V AC; 0.6 A 600 V AC

Terminal capacity: AWG 18-14

Torque: 1 Nm/9 LB.-IN

Rating data for approved types

Device for world markets IEC Δ UL/CSA

Calculate motor power in this range according to the rated operational current. Stated values to NEC Table 430 - 150.

Approvals

Product Standards	UL 508; CSA-C22.2 No. 14; IEC60947-4-1; CE marking
UL File No.	E36332
UL CCN	NLRV
CSA File No.	12528
CSA Class No.	3211-05
NA Certification	UL listed, CSA certified
Specially designed for NA	No

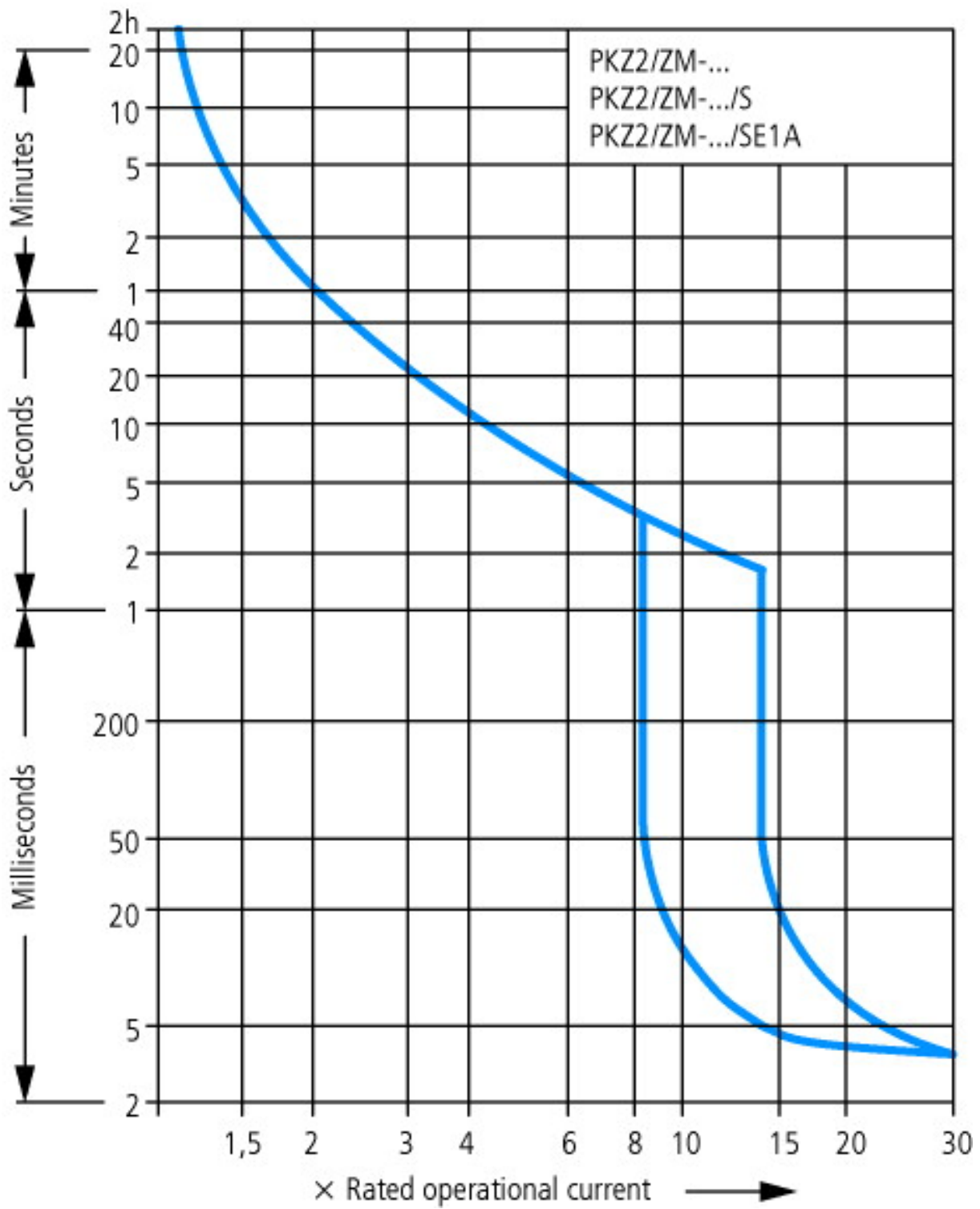
ZM-..-PKZ2, ZMR-..-PKZ2 trip blocks for motor protection

Setting range of overload releases		$x I_n$	0.6 - 1
Short-circuit releases		$x I_n$	8.5 - 14
Phase-failure sensitivity			IEC/EN 60947-1-1, VDE 0660 Part 102

Technical data ETIM 4.0

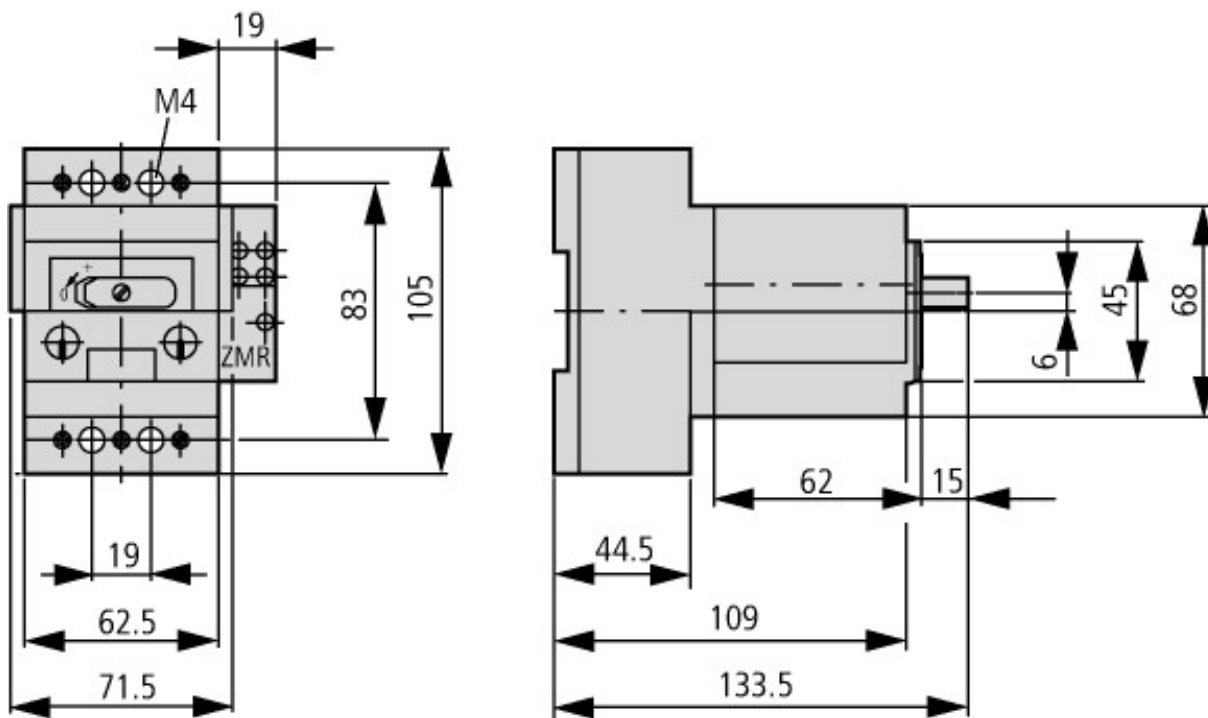
Final value of non-delayed short-circuit release setting range		A	140
Initial value of non-delayed short-circuit release setting range		A	80
Setting range of overload releases		A	10
Short-circuit release function			Non-delayed
Number of poles			3
Rated uninterrupted current I_n		A	10

Characteristics



Motor-protective circuit-breaker (high-capacity) compact starter tripping characteristic

Dimensions



Motor-protective circuit-breaker and trip block
PKZ2/ZM... + ZMR-...-PKZ2

Additional product information (links)

AWA1280-0876 Motor-protective circuit-breaker

[AWA1280-0876 Motor-protective circuit-breaker](#)

AWA1280-1228 Motor-protective trip block with overload release

[AWA1280-1228 Motor-protective trip block with overload release](#)

AWB1210-1485 PKZ2 motor-protective circuit-breakers, overload monitoring of EEx e motors

[AWB1210-1485 PKZ2 motor-protective circuit-breakers, overload monitoring of EEx e motors](#)

Motor starters and "Special Purpose Ratings" for the North American market

http://www.moeller.net/binary/ver_techpapers/ver953en.pdf

Busbar Component Adapters for modern Industrial control panels

http://www.moeller.net/binary/ver_techpapers/ver960en.pdf