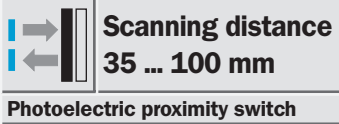


WT 12-2 P 460

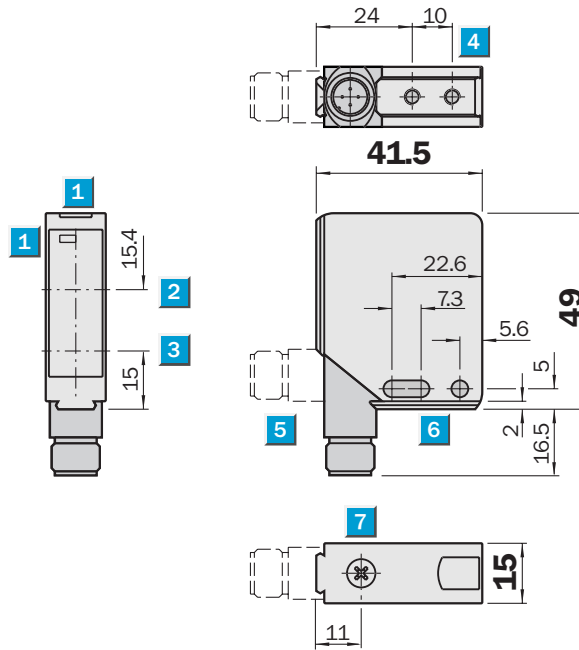
Photoelectric Proximity Switch with precise BGS



- Red-light emitter LED, fast alignment is possible
- Precise background suppression
- Scanning distance adjustable; preadjusted at a distance of 52.5 mm not locked
- Insensitive to ambient light sources, i.e. increased operating reliability
- No mutual interference if devices are installed opposite each other, consequently increased application possibilities

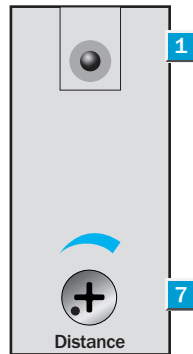


Dimension illustration



Setting options

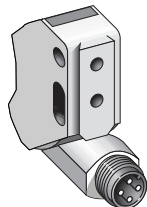
WT 12-2P 460



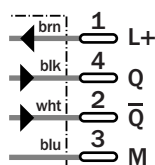
- 1 LED signal strength indicator
- 2 Optical axis – receiver
- 3 Optical axis – sender
- 4 M 4 threaded mounting hole – 4 mm deep
- 5 Plug M 12, 4-pin, rotatable by 90°
- 6 Mounting holes \varnothing 4.2 mm
- 7 Scanning distance control

Connection type

WT 12-2P 460



4-pin, M 12



WT 12-2P 460 Photoelectric proximity switch with precise background suppression

Technical data		WT 12-2	P 460								
Scanning distance , adjustable	35 ... 100 mm/6 % Remission										
Light source¹⁾, light type	LED, visible red light										
Light spot diameter	2 mm at a distance of 60 mm										
Supply voltage V_S	10 ... 30 V DC ²⁾										
Ripple ³⁾	$\leq 5 V_{PP}$										
Current consumption ⁴⁾	≤ 30 mA										
Switching outputs	Transistor outputs PNP, Q and \bar{Q}										
Signal voltage HIGH ⁵⁾	$V_S - 2.9$ V										
Signal voltage LOW	Approx. 0 V										
Output current I_A max.	≤ 100 mA										
Response time ⁶⁾	≤ 330 μ s										
Max. switching frequency ⁷⁾	1500/s										
Connection type	Plug M 12, 4-pin										
VDE protection class⁸⁾	<input type="checkbox"/>										
Circuit protection⁹⁾	A, B, C										
Enclosure rating	IP 67										
Ambient temperature T_A	Operation -40 °C... $+60$ °C										
	Storage -40 °C... $+75$ °C										
Weight	With plug: 120 g										
Housing material	Zinc die-cast housing										

¹⁾ Average service life 100,000 h at $T_A = +25$ °C

²⁾ Limit values

³⁾ Must be within V_S tolerances

⁴⁾ Without load

⁵⁾ At $T_A = +25$ °C and 100 mA output current

⁶⁾ Signal transit time with resistive load

⁷⁾ With light/dark ratio 1:1

⁸⁾ Withstand voltage 50 V DC

⁹⁾ A = V_S connections reverse-polarity protected

B = Output Q_P and Q_N short-circuit protected

C = Interference pulse suppression

Order information	
Type	Part no.
WT 12-2P 460	1 016 153

Great Britain

Erwin Sick Ltd.
Waldkirch House
39 Hedley Road, St. Albans
Hertfordshire AL 1 5BN
☎ +44 17 27-83 11 21
Fax +44 17 27-85 67 67
info@sick.co.uk

USA

SICK, Inc.
6900 West 110th Street
Bloomington, MN 55438
☎ +1 (952) 9 41-67 80
Fax +1 (952) 9 41-92 87
WATS: 1-800-325-7425
info@sickusa.com

Australia

Sick Pty. Ltd. Head Office
P.O. Box 214
899 Heidelberg Road
Ivanhoe, Vic. 3079, Australia
☎ +61 39 49 74 10 0
(0 08) 33 48 02 - toll free
Fax +61 39 49 71 18 7
sales@sick.com.au

