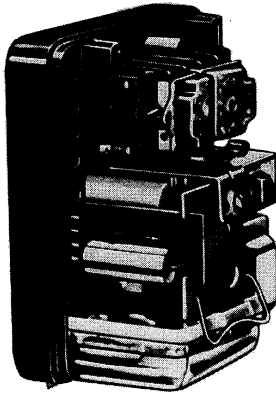


R4795A PRIMARY CONTROLS



Electrical Ratings:

TERMINAL	LOAD	RATING
3	Pilot Valve Intermittent Ignition ^a	125 VA pilot duty 360 VA
4	Interrupted Ignition	360 VA
5	Main Valve	125 VA pilot duty, or 25 VA pilot duty plus one or more motorized valves with total rating up to 400 VA opening. 200 VA holding
6-7	Airswitch	0.6 A at 30 Vdc
8	Fan or Burner Motor	9.8 A full load, 58.8 A locked rotor (inrush) at 120 Vac, 4.9 A full load, 29.4 A locked rotor (inrush) at 220 and 240 Vac.
Isolated Spdt Alarm Terminals (optional)	Alarm	3.0 A at 24 Vac, or 1.0 A at 120 Vac in suitable wiring enclosure.

^aIf ignition is connected to terminal 3, terminal 4 cannot be used.

Provide solid state, electronic, flame safeguard protection for commercial and industrial single or dual fuel burners.

Interchangeable, plug-in amplifiers permit R4795 to be used with rectification or ultraviolet type flame detectors. R4795A recycles once after flame failure in attempt to re-establish pilot before lockout. Power Consumption (at 60 Hz): 6.0W maximum for rectification; 8.0W maximum for ultraviolet. Safety Switch Timing: 15 sec, nominal. Listed by Underwriters Laboratories Inc: 120V models using 30, 60 or 90 sec prepurge timers, including -40°F (-40°C) rated models, File No. MP268, Guide No. MCCZ; Underwriters Laboratories Inc. component recognized: 120V models using 7 or 10 sec prepurge timers, including -40°F (-40°C) rated models, File No. MP268, Guide No. MCCZ2; Industrial Risk Insurers (formerly FIA) approvable; CSA certified: 120V models only including -40°F (-40°C) rated models, File No. LR1620; Factory Mutual approved: R4795A, 120V models, Report No. 18774.

Ambient Temperature Range:

	MINIMUM ^a		MAXIMUM ^b	
	F	C	F	C
50 Hz	-20	-29	115	46
60 Hz	-20	-29	125	52

^aR4795A1081 has minimum ambient temperature rating of -40°F (-40°C) with maximum of 115°F (46°C) at 60 Hz and 105°F (40°C) at 50 Hz.

^bSubtract 10°F (6°C) if optional alarm contacts are included.

Approximate Dimensions (with cover and subbase)

Model	HEIGHT		WIDTH		DEPTH	
	in	mm	in	mm	in	mm
R4795A	5	127	5	127	4-3/4	120.7

Replacement Parts

131891C—Cover Assembly—R4795A.
134057B—Cover Assembly—R4795D.

Accessories

2270A1024 Mounting Subbase --serves as junction box for connecting to external circuits. Contains terminal blocks with coded terminals and screws.
 121708 Rectification Flame Simulator for RA890F.
 1235I4B Ultraviolet (Minipeeper) Flame Simulator for RA890G.
 W136A1045 Test Meter (includes 196146 Meter Connector Plug).
 132569 Contact Cleaner.
 FSP1535 Tester -- for operational check of all RA890's.
 118702B Remote Reset Cover -- 120V, 60 Hz.
 101079 Ignition Transformer 240V, 60Hz
 22042 Ignition Transformer 120V, 60Hz
 Q624A1014 Solid State Ignition Transformer
 Q652A1007 Solid State Spark Generator Oil 120V, 60Hz
 Q652B1006 Solid State Spark Generator Gas 120V, 60Hz
 Q652B1014 Direct Spark Ignition Transformer for gas applications (single electrode) 220V, 50/60 Hz.

R1061012 Ignition Cable for ignition installations in high temperature environments; rated at 350°F (177°C) for continuous duty, and up to 500°F (260°C) for intermittent use; tested to 20,000 volts RMS.
 R1239001 High Tension Ignition Cable; for ignition installations in a contaminating environment; very resistant to severe conditions of oil, heat, and corona. Tested to withstand high voltages up to 25,000 volts RMS in a salt bath for 1 minute without breakdown. Rated at 200°F (93°C) for continuous duty, and up to 350°F (177°C) for intermittent use.
 R1298020 Cable; for flame detector ("F" leadwire) installations in a high temperature environment; rated up to 400°F (204°C) for continuous duty; tested for operation up to 600V and breakdown up to 7500V.

ORDER NUMBER	VOLTAGE (50/60 Hz)	SPDT ALARM CONTACTS	REQUIRED COMPONENTS (order separately)		
			MOUNTING BASE	PLUG-IN AMPLIFIER*	PLUG-IN PURGE TIMER
			Q270A1024 permits	1, 2, 4, or 5	ST71A1000, 7 sec
R4795A1016	120	Yes	recessed or surface mounting	1, 2, 4, or 5	ST71A1042, 10 sec
R4795A1040	220	Yes		1, 2, 4, or 5	STA71018, 30 sec

*A number is listed for each amplifier in table below. These numbers correspond to those listed under "Plug-in Amplifier" above.

NUMBER (see ordering table)	ORDER NUMBER	TYPE	FLAME FAILURE RESPONSE TIME (sec)	USE WITH
1	R7289A1004	Rectification (green)	3.0	Rectifying photocell flame rod or C7012A, C Purple Peeper Ultraviolet Flame Detector
2	R7289A1012		0.8	
3	R7289A1020*		3.0	
4	R7290A1001	Ultraviolet (purple)	3.0	Use with C7027A, C7035A, or C7044A Minipeeper Ultraviolet flame Detector
5	R7290A1019		0.8	
6	R7290A1027*		3.0	

*Minimum Ambient Temperature Minus 40°F [minus 40°C]