

Target Magnets

502.969.8000

Target Magnets Increase the Sensing Range of GO Switches

AMP3 Magnet/Resin Cover

AMC3 magnet in plastic molded bracket with mounting holes. $\frac{7}{16}$ " (22 mm) x $2\frac{1}{16}$ " (65 mm) x $\frac{17}{32}$ " (13 mm) thick with $\frac{7}{32}$ " (6 mm) holes.

For all GO Switches



AMS4 Magnet/Stainless Cover

AMC4 magnet molded into stainless steel cover, with mounting holes. $1\frac{1}{4}$ " (32 mm) x $1\frac{1}{16}$ " (37 mm) x 1" (25 mm) thick with $\frac{3}{16}$ " (5 mm) holes.

For all GO Switches



AMC5 Magnet/ Stainless Cover

AMC1 magnet molded into stainless cover with mounting holes. $\frac{7}{16}$ " (22 mm) x $2\frac{1}{16}$ " (65 mm) x $\frac{17}{32}$ " (13 mm) thick with $\frac{7}{32}$ " (6 mm) holes.

For all square GO Switches



Leverless Limit Switches

GO
SWITCH

AMS7 Magnet/Stainless

Magnet assembly, 2" (50 mm) x $\frac{1}{2}$ " (13 mm) $\frac{7}{16}$ -20 UNC threads.

For 70 Series GO Switches



2 NUTS &
LOCKWASHERS
PROVIDED

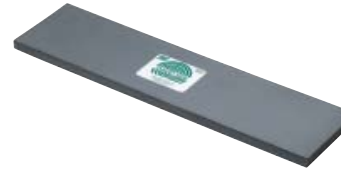
$\frac{7}{16}$ -20
UNF

1.265
(32mm)
1.874
(48mm)

AMF6 Magnet (Machinable)

Flexible sensing amplifier/external magnet. 3" (76 mm) x 12" (305 mm) x $\frac{3}{16}$ " (10 mm) thick.

For all square GO Switches



Refer to individual GO Switch models for extended sensing ranges with external target magnets.