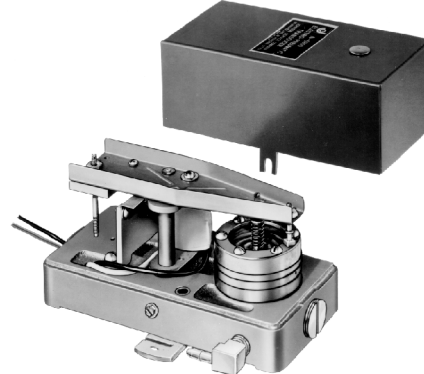


N-6820 Electro-Pneumatic Transducer Voltage Input Linear Pressure Output

The Johnson N-6820 Electric to Pressure Transducer is designed to convert a DC voltage input signal, from electric or electronic apparatus, into a linear pressure output. This output can be adjusted within a 0 to 30 psi range. This instrument has a factory calibrated sensitivity setting, a setpoint adjustment and infinite resolution.

The transducer uses a torque motor, which for a given electrical input, produces many times the torque output of a conventional linear motor. Due to the unique construction of the torque motor, the hysteresis is negligible and the transducer output is linear.



N-6820 Electro-Pneumatic Transducer

Operation

A change in the voltage input to the transducer changes the position of the transfer lever in relation to a control port. This actuates a pneumatic relay and produces an output pressure proportional to the voltage input. Pneumatic feedback is incorporated to provide maximum accuracy, stability and linearity between the voltage input and the output pressure.

On a power failure, the output pressure is determined by the set point. The action of the N-6820 is changed by reversing polarity of the input.

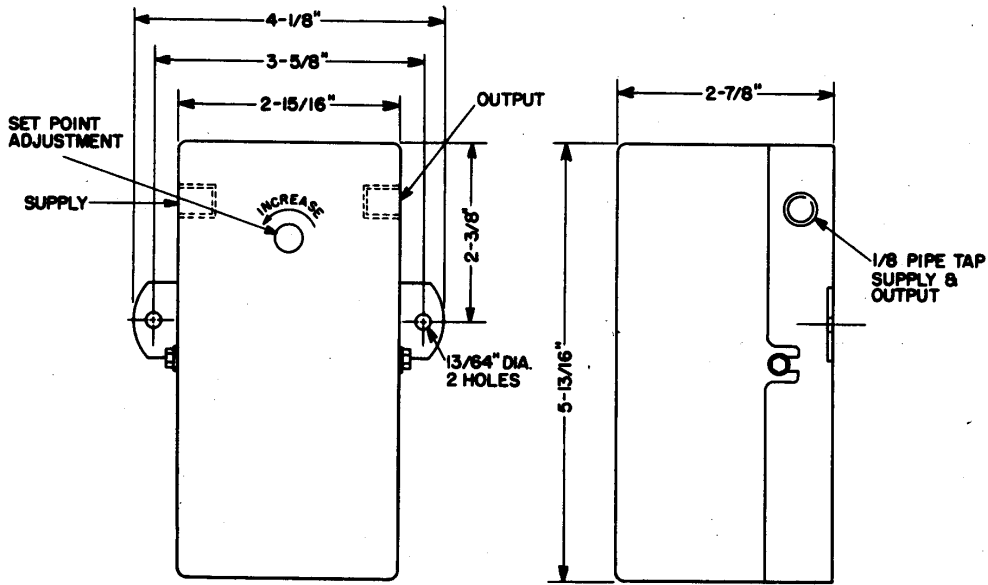
Specifications

Model	N-6820-1 Electro-Pneumatic Transducer	
Action	Direct or Reverse by Changing Polarity of Input	
Factory Calibration	Input:	0-16 VDC
	Output:	3-15 psi
Input Resistance	1000 ohms	
Linearity and Hysteresis	1% of Full Scale	
Ambient Temperature Limits	Maximum: 125°F (50°C) Minimum: 40°F (4.44°C)	
Supply Air Pressure	30 psi Maximum	
Pressure Output	Within 0 to 30 psi Range (Factory Calibrated 3 to 5 psi)	
Air Consumption	1.5 scfh at 20 psi Supply Pressure	
Pneumatic Relay Capacity	60 scfh at 20 psi Pressure Drop Across Transducer	
Resolution	Infinite	
Repeatability	Within 0.2% of Input Range	
Air Connections	1/8" F P T	
Lead Wire	#18 Stranded AWG, 18" Long--Red (+), Black (-)	
Material	Body	Cast Brass
	Cover	#20 Gauge Steel
Finish	Body	Natural Brass
	Cover	Green Enamel

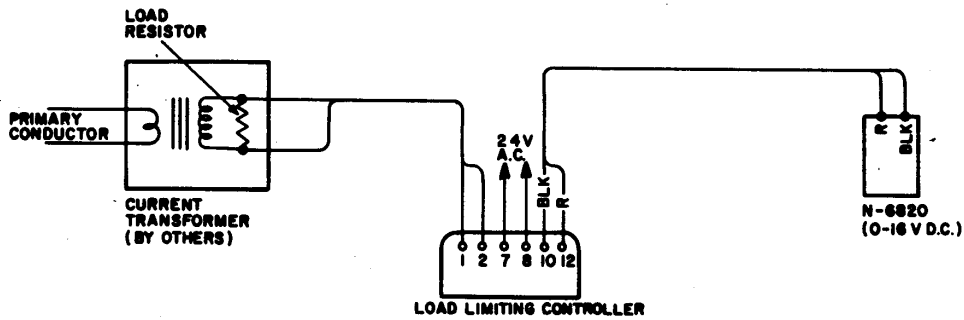
The performance specifications are nominal and conform to acceptable industry standards. For application at conditions beyond these specifications, consult the local Johnson Controls office. Johnson Controls, Inc. shall not be liable for damages resulting from misapplication or misuse of its products.

Mounting

The N-6820 may be mounted in any position using the 13/64 in. diameter mounting holes in the attached bracket. Two lead wires are provided for connecting the transducer to the input source. All wiring must conform to national and local codes.



Typical Application



JOHNSON
CONTROLS

Controls Group
507 E. Michigan Street
P.O. Box 423
Milwaukee, WI 53202

Printed in U.S.A.