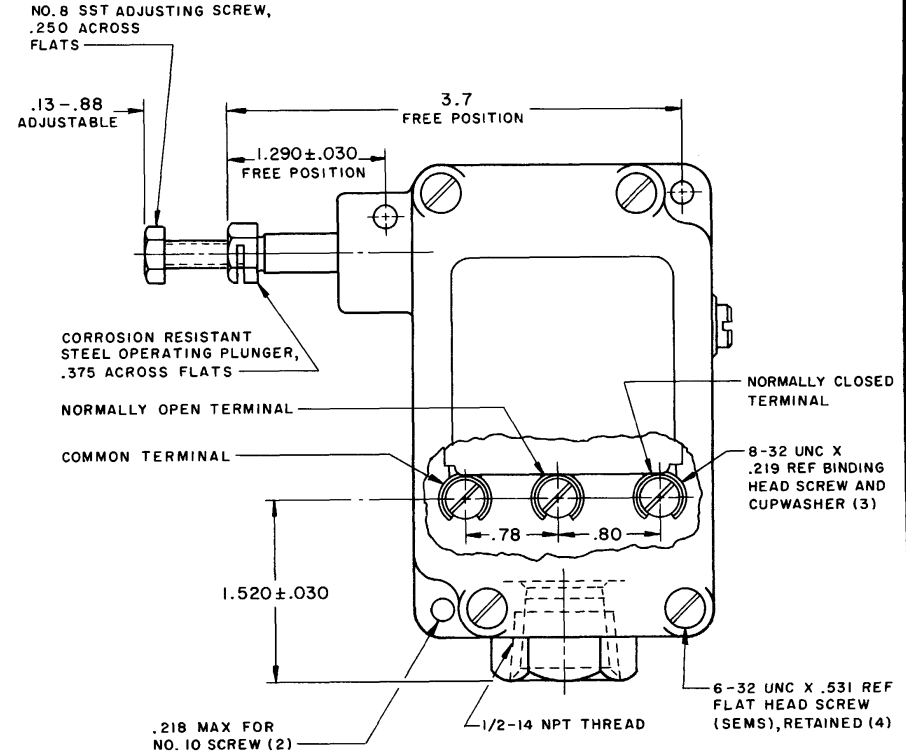
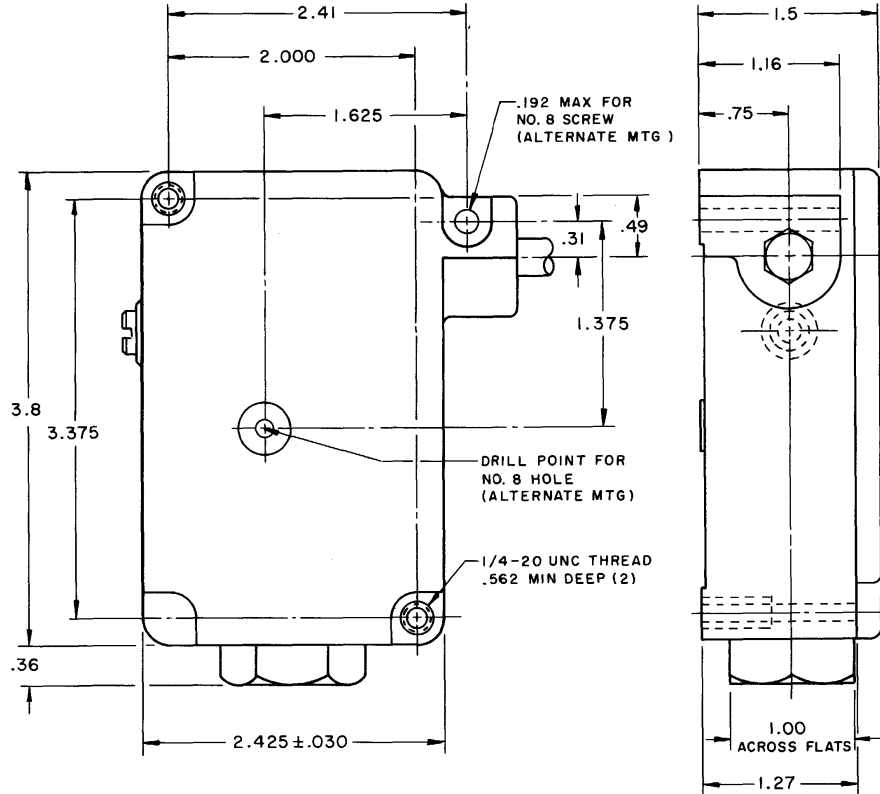


DRAWING NUMBER: 1PD1
 ISSUE: 9
 REVISIONS:
 A 021632 O M W 25 JUL 66
 B 026023-4 D L F 25 JUL 66
 C 0498698 G J W 7 JUL 79
 D 0825318 J A K 19 FEB 97
 CHECK: 26 JUL 66
 DRAWN: O M W 25 JUL 66



THIS DRAWING COVERS A PROPRIETARY ITEM AND IS THE PROPERTY OF MICRO SWITCH, A DIVISION OF MINNEAPOLIS-HONEYWELL REGULATOR CO. THIS DRAWING IS NOT TO BE COPIED OR USED WITHOUT THE APPROVAL OF MICRO SWITCH.

CHARACTERISTICS	ELECTRICAL DATA	SCALE FULL
OPERATING FORCE ----- 3 1/2 LB MAX	CONTACT ARRANGEMENT S P D T	DO NOT SCALE PRINT
PRETRAVEL ----- .110 MAX		UNLESS OTHERWISE NOTED
PULSE POSITION --- ADJUSTABLE FROM .030-.450 BEYOND OPERATING POSITION		DIMENSIONS ARE IN INCHES
FORCE AT PULSE POSITION ----- 6 LB MAX	15 A-125, 250 OR 480 VAC	TOLERANCES ARE:
SWITCH-BASIC REPLACEMENT - BZ-2RD776-P4	1/2 A-125 VDC; 1/4 A-250 VDC	ONE PLACE (.0) ±.030
	1/8 HP-125 VAC; 1/4 HP-250 VAC	TWO PLACE (.00) ±.015
		THREE PLACE (.000) ±.008
		ANGLES ±
		WEIGHT

- NOTES**
- 1- ALUMINUM HOUSING AND COVER FINISHED IN GRAY PAINT
 - 2- IT IS ESSENTIAL TO PREVENT ENTRANCE OF HARMFUL AGENTS THRU THE CONDUIT OPENING TO OBTAIN THE FULL BENEFIT OF THE SEALED CONSTRUCTION PROVIDED IN THIS UNIT