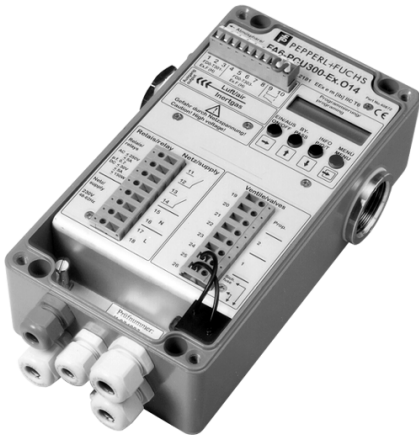


Pressure control unit



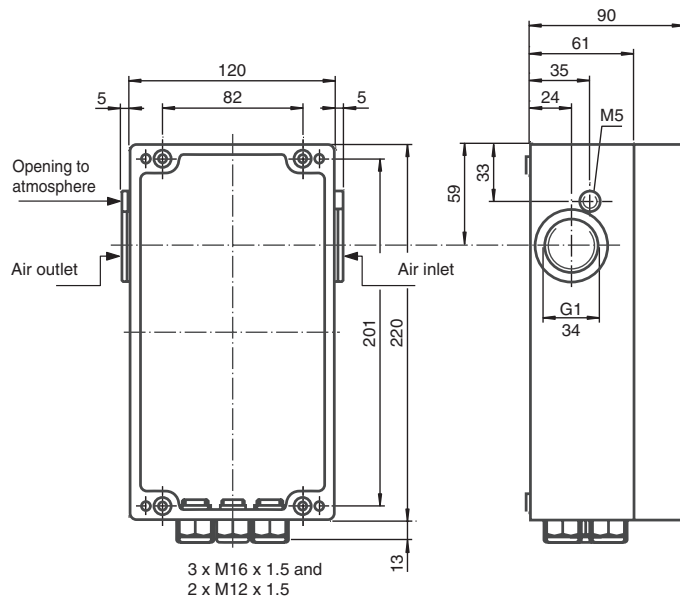
FA6-PCU300A-Ex.O**



Features

- 230 V AC
- Compact design
- Easy installation
- Economical purging method
- High safety standard
- LCD indication of operating status
- Menu driven programming

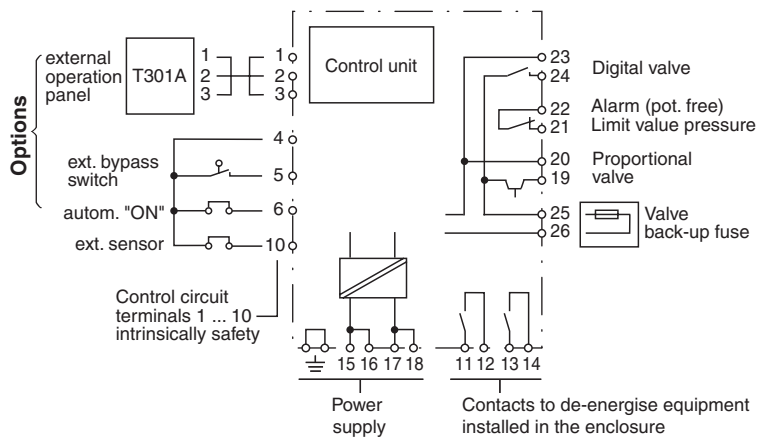
Dimensions



Function

The pressure control unit with integrated pressure switch monitor the purge-gas pressure and throughput. Operating modes and parameters can be programmed and called-up with 4 keys. They are displayed in an 8-character LC display. Optimum adaptation to the application is provided by the choice of orifice meters.

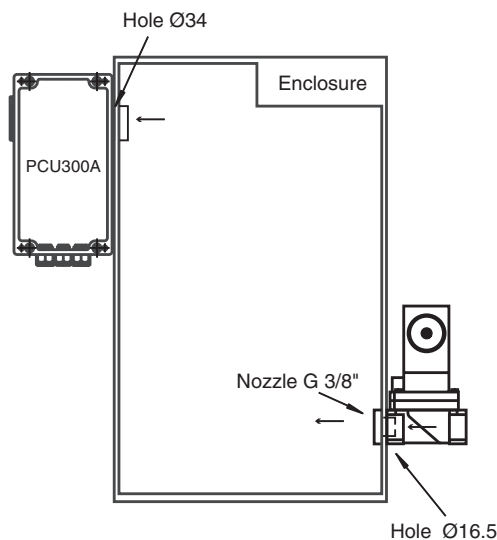
Electrical connection



Supply	
Rated voltage	230 V AC, 48 ... 62 Hz
Power consumption	approx. 2.5 VA
Conformity	
Protection degree	IEC 60529
Input characteristics	
Measurement range	pressure measurement range 0 ... 18 mbar volumetric flow measurement range depends on the orifice size
Operating conditions	
Mounting conditions	inside or outside the enclosure Back-up fuse for solenoid valve in the control unit must be ordered separately (see selection table in data sheet PCU-F-Ex.****MA).
Ambient conditions	
Ambient temperature	-20 ... 45 °C (253 ... 318 K) at T6 -20 ... 60 °C (253 ... 333 K) at T4
Mechanical specifications	
Protection degree	IP65 (without consideration of the air outlet opening)
Material	aluminium, lacquer-coated
Dimensions	220 x 120 x 90 mm (8.7 x 4.7 x 3.5 in)
Data for application in conjunction with hazardous areas	
EC-Type Examination Certificate	DMT 00 ATEX E 004 X , for additional certificates see www.pepperl-fuchs.com
Group, category, type of protection	<div style="display: flex; flex-direction: column; gap: 5px;"> ⊕ II 2G EEx em [ib] [p] IIC T6 (-20 °C ≤ T_{amb} ≤ 45 °C) ⊕ II 2G EEx em [ib] [p] IIC T4 (-20 °C ≤ T_{amb} ≤ 60 °C) ⊕ II 2D Ex tD [ibD] [pD] IP65 T70°C (-20 °C ≤ T_{amb} ≤ 60 °C) </div>
Supply	
Safety maximum voltage U _m	253 V (Attention! U _m is no rated voltage.)
Output	
Contact loading	250 V AC/5 A/cos φ > 0.7/30 V DC/5 A/150 W
Directive conformity	
Directive 94/9 EC	EN 50014, EN 50016, EN 50019, EN 50020, EN 50028, EN 954-1, IEC 61241-0, IEC 61241-1, IEC 61241-11
General information	
Supplementary information	EC-Type Examination Certificate, Statement of Conformity, Declaration of Conformity and instructions have to be observed. For information see www.pepperl-fuchs.com .

Mounting example

External mounting



Type code/model number

	Control unit	F * * PCU300A-Ex.O * *		
Operating voltage	230 V AC	A 6		
	115 V AC	A 5		
	24 V DC	D 2		
Orifice*	6 mm	6	0.15	Minimum flow (l/s)
	10 mm	10	0.35	
	14 mm (preferred type).....	14	0.85	
	18 mm	18	1.25	

*See the operating instruction for selection assistance.

