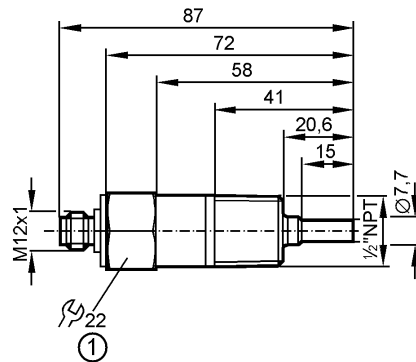


SET 75 x SC0501

Flow sensors



1: Tightening torque max. 100 Nm (with stainless steel adapter) or according to ANSI B1.20.1

Product characteristics

Flow monitor

Compact type

Process connection: 1/2" NPT

Factory setting of the switch point

15 cm/s

(to water (20 °C) and mounting in 4" pipe)

Application

Application

water

Pressure rating [bar]

25

Medium temperature [°C]

-10...60 \*)

Electrical data

Electrical design

AC/DC

Operating voltage [V]

24 AC/DC ± 15% (AC: 47...63 Hz <sup>1)</sup>)

Current consumption [mA]

< 50

Protection class

III

Reverse polarity protection

yes

Outputs

Output function

normally open

Current rating [mA]

80 AC / 80 DC

Voltage drop [V]

< 0.8

Short-circuit protection

no

Overload protection

no

Reaction times

Power-on delay time [s]

15

Response time [s]

1...10

Environment

Ambient temperature [°C]

-20...70

Storage temperature [°C]

-40...70

Protection

IP 67

Tests / approvals

Shock resistance

DIN IEC 68-2-27:

50 g (11 ms)

Vibration resistance

DIN IEC 68-2-6:

20 g (10...2000 Hz)

Mechanical data

Process connection

1/2" NPT

Materials (wetted parts)

stainless steel (303S22)

Housing materials

stainless steel (303S22)

Weight [kg]

7.655

Electrical connection

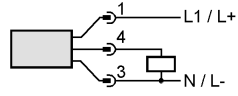
Connection

M12 connector

**ZZ0099 - Flow monitor - eclass: 27273101 / 27-27-31-01**

Max. cable length [m] < 10

**Wiring**



Remarks

Remarks

<sup>1)</sup> to EN50178, SELV, PELV

\*) in case of medium temperatures < 4°C the data refer to water/glycol (40% glycol)

Storage temperature: -40...70 °C

Pack quantity [piece]

1