

Push Buttons and Operator Interface Specifiers Guide

XA2B 22 mm Pilot Lights and Light Modules



Standard
ZA2BV0•



ZA2BV6



ZA2BV3

Pilot light head

Type	Color	Catalog Number
Standard	White	ZA2BV01
	Green	ZA2BV03
	Red	ZA2BV04
	Amber	ZA2BV05
	Blue	ZA2BV06
	Clear	ZA2BV07
	Green	ZA2BV033
Special lens for neon and LED lamps	Red	ZA2BV043
	Amber	ZA2BV053
	Blue	ZA2BV063
	Clear	ZA2BV073

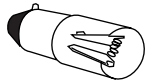
Pilot light modules

Type	Catalog Number
Direct supply (bulb included) ★ (AC/DC)	ZA2BV6★
Transformer type (AC only) 1.2 VA/6 V (bulb included)◆	
24 V	ZA2BV1
48 V	ZA2BV2
110/120 V	ZA2BV3
220/240 V	ZA2BV94
440/480 V	ZA2BV95
550/660 V	ZA2BV98
Resistor type 130 V (bulb included)	
220/250 V	ZA2BV7

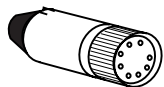
★ Complete catalog number by adding one of the following voltages: 6, 12, 24, 48 or 120 V. If desired without bulb, omit voltage.
◆ Additional primary voltages are available. Contact local field office for details.

Lamps

Type	Voltage AC/DC	Watts	Catalog Number
Incandescent Replacement bulbs (Type BA9s)	6	1.5	DL1CB006
	12	2.0	DL1CE012
	24	2.0	DL1CE024
	48	2.4	DL1CE048
	130	2.6	DL1CE130
Neon (use with direct supply light module)	120	-	NE51HRT120V
	220	-	NE51HRT220V
	380	-	NE51HRT380V



DLICE •••
(incandescent)



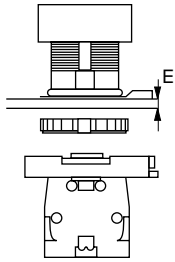
DLICJUS •••
(LED)

Type	Color	Voltage	Part Number	
LED, BA9s base for Direct Supply blocks	Green	6 Vac/dc	DL1CJUS0063	
	Red	6 Vac/dc	DL1CJUS0064	
	Amber	6 Vac/dc	DL1CJUS0065	
	Green	12 Vac/dc	DL1CJUS0123	
	Red	12 Vac/dc	DL1CJUS0124	
	Amber	12 Vac/dc	DL1CJUS0125	
	Green	24 Vac/dc	DL1CJUS0243	
	Red	24 Vac/dc	DL1CJUS0244	
	Amber	24 Vac/dc	DL1CJUS0245	
	Green	120 Vac/dc	DL1CJUS1203	
	Red	120 Vac/dc	DL1CJUS1204	
	Amber	120 Vac/dc	DL1CJUS1205	
	LED, BA9s base for retrofitting into transformer Light Modules	Green	9 Vac only	DL1CJUS0093
		Red	9 Vac only	DL1CJUS0094
		Amber	9 Vac only	DL1CJUS0095

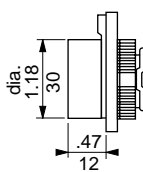
Application Information Page 20
Replacement parts (bulbs & lenses) Page 30
Legend Plates Page 29

Enclosures Pages 32-34
Dimensions Page 31

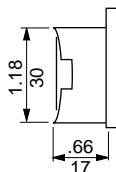
Panel cut-out
 (Thickness E = 1 to 5 mm)



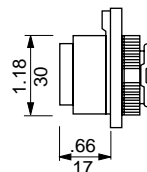
Control units
 (operating heads)
ZA2BA**



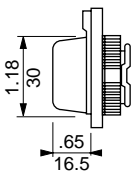
ZA2CA*



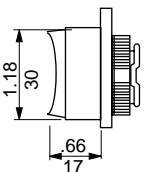
ZA2BL*



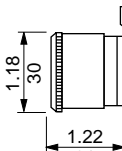
ZA2BP*



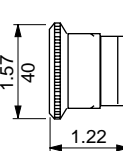
ZA2CL*



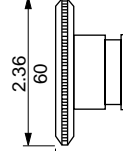
ZA2B***



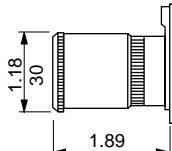
ZA2B***



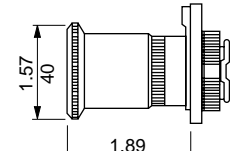
ZA2B***



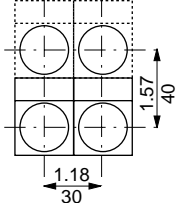
ZA2BS834



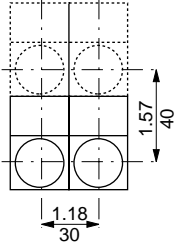
ZA2BS844



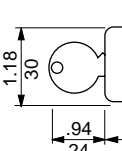
ZA2B
 (with 30 x 40
 legend plate carrier)



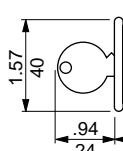
ZA2B
 (with 30 x 50
 legend plate carrier)



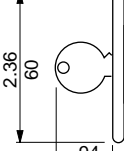
ZA2BS74



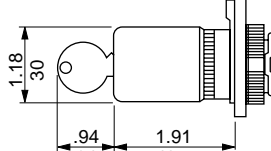
ZA2BS14



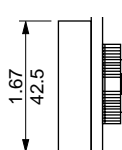
ZA2BS24



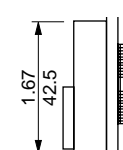
ZA2BS9*4



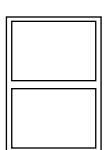
ZA2BA34**



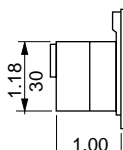
ZA2BL34**



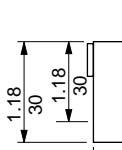
ZA2BD**



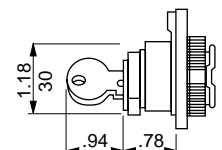
ZA2BJ**



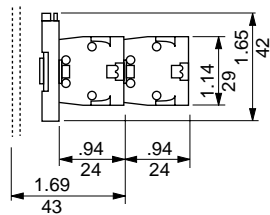
ZA2BJ**



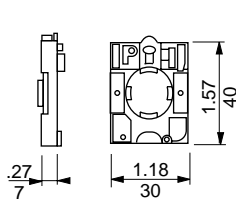
ZA2BG*



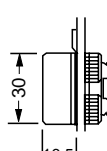
Body contact assemblies
ZA2BZ10*



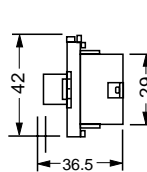
Mounting collar
ZA2BZ009



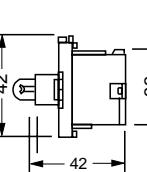
ZA2BVO*



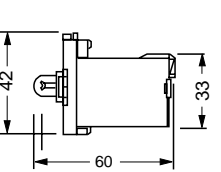
(bodies)
ZA2BV6



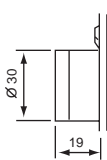
ZA2BV7



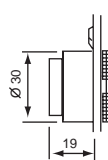
ZA2BV3, BV4, BV5



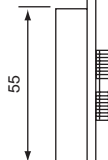
ZA2BW3**



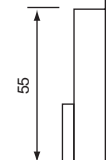
ZA2BW1**



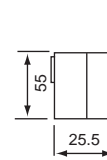
ZA2BW8*4**



ZA2BW8*4**



ZA2BK1**



All dimensions are in mm. To convert to inches, divide mm by 25.4.

