

Product data sheet

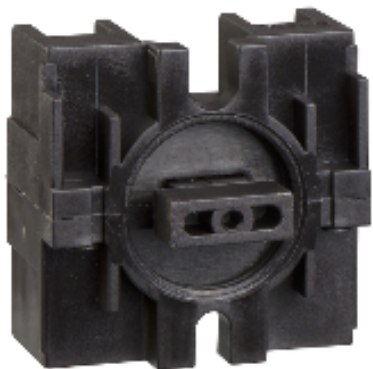
Characteristics

XESB1011

PENDANT STATION CONTACT - 600V AC - 10A - XE



Product availability : Stock - Normally stocked in distribution facility



Main

Product or component type	Controllers separate parts
Accessory / separate part category	Control accessory
Product specific application	Heavy hoisting applications Medium hoisting applications
Product compatibility	XKD XKM
Accessory / separate part type	Contact at lever base

Complementary

Locking position	In the center
Interlocking type	Electrical
Contact operation	Snap action

Ordering and shipping details

Category	22466 - PUSHBUTTON, ACCESSORIES
Discount Schedule	CS2
GTIN	00785901641049
Nbr. of units in pkg.	1
Package weight(Lbs)	5.999999999999998E-2
Returnability	Y
Country of origin	CZ

Contractual warranty

Warranty period	18 months
-----------------	-----------