

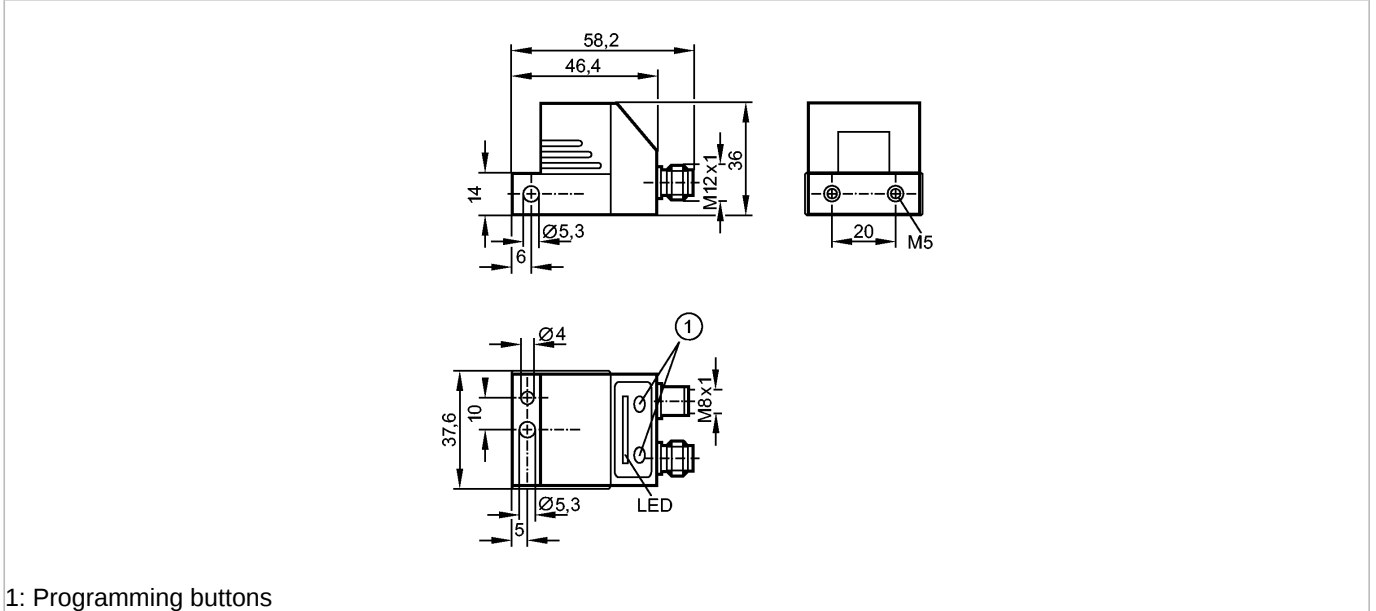
no longer available - archive entry Alternative article: VSA001+VSE002 or VNB001  
 When selecting an alternative article and accessories please note that technical data may differ!

**efector800**  
 VE1002



VIBRATION DIAGNOSTIC UNIT

Diagnostic systems



1: Programming buttons



Product characteristics

Vibration diagnostic unit

Connection via M12 x 1 and M8 x 1 connectors

Spectral analysis / FFT

Envelope-curve FFT

Trend analysis

Application

Application Up to 20 frequencies in the spectrum, freely selectable, diagnostic level adjustable

Electrical data

Electrical design DC PNP

Operating voltage [V] 10...32 DC

Current consumption [mA] 100 (24 V) plus optional external pulse pick-up

Protection class III

Measuring / setting range

value range [g] ± 25 \*\*)

Environment

Ambient temperature [°C] -30...60

Protection IP 67

Tests / approvals

EMC IEC 1000-4-2/3/4/6

Mechanical data

Housing materials housing: diecast zinc nickel-plated; keypad: polyester

Overload protection [g] 100

Weight [kg] 0.23

Electrical connection

Connection M12 connector; M8 connector

**Wiring**

M8 connector (RS-232 communication)



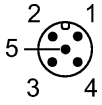
Pin 1: -

Pin 2: TxD

Pin 3: GND

Pin 4: RxD

**VE1002 - Vibration diagnostic unit - eclass: 27201406 / 27-20-14-06**



M12 connector (electrical connection)

Pin 1: supply +

Pin 2: red function; switching output 2 / 100 mA / NO/NC programmable

Pin 3: supply -

Pin 4: yellow function; switching output 1 / 100 mA / NO/NC programmable

Pin 5: rotational speed, 0...20 mA or pulse input

Remarks

Remarks

Pin 2 (switching output 2) and pin 4 (switching output 1) can only be programmed in pairs

\*\* nominal  $\pm 20$

Pack quantity

[piece]

1

Other data

Sensing principle

micromechanical accelerometer / capacitive measuring principle / one measurement axis

Minimum measuring time [s]

8 (\*\*\*)

Frequency range [Hz]

0.125...500

Spectral resolution [Hz]

0.125

Speed range [rpm]

12...1500 (the actual rotational speed range depends on the type of the rolling element bearing and can therefore differ)

ifm efector, inc. • 1100 Atwater Drive • Malvern • PA 19355 — We reserve the right to make technical alterations without prior notice. — US — VE1002 — 21.06.2006

no longer available - archive entry Alternative article: VSA001+VSE002 or VNB001

When selecting an alternative article and accessories please note that technical data may differ!