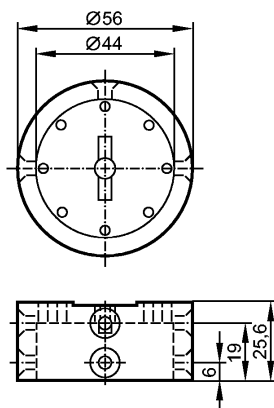


**no longer available - archive entry**

replaced by: UV0002



**Product characteristics**

Target puck

Ø 56 mm

**Mechanical data**

Design for mechanical interfaces to pneumatic actuators or manually-operated valves

Housing materials Target puck: HDPE; Puck mounting screw: stainless steel M6 x 25 mm; Sensor mounting screws: stainless steel 10 - 24 x 1¼"

**Accessories**

Accessories (included) 3 flathead HDPE screws; 3 flathead SS 10-32 x ¼" screws; 1 flathead SS M6 x 25 mm screw; 2 Flat SS washers; 2 Panhead SS 10-24 x 1¼" screws; 1 direction indicator yellow, HDPE

**Remarks**

Pack quantity [piece] 1

ifm efector, inc. • 1100 Atwater Drive • Malvern • PA 19355 — We reserve the right to make technical alterations without prior notice. — US — U20126 — 11.01.2006

**no longer available - archive entry**

replaced by: UV0002