



Spec.
3.0

Model number

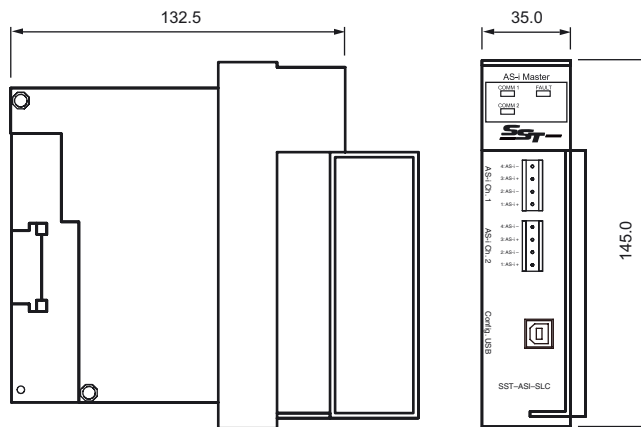
SST-ASI-SLC

AS-Interface scanner for SLC500 PLC

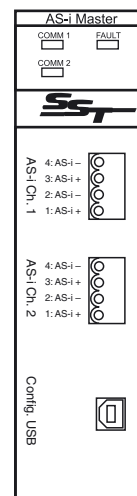
Features

- Gateway compliant with AS-Interface specification 3.0
- 2 AS-Interface networks
- Commissioning, using USB port and hyperterminal or using G-file in PLC

Dimensions



Electrical connection



Technical data

General specifications

AS-Interface specification	V3.0
PLC-Functionality	none
Description	AS-Interface scanner for SLC500 PLC

Indicators/operating means

LED FAULT	Configuration mismatch, Two or more AS-i nodes missing, In hyperterminal configuration mode, G-File error or slot disabled; LED red flashing Error; red
LED COMM	AS-i nodes missing; LED green flashing Error; red Normal operation; Green

Electrical specifications

Insulation voltage	U_i ≥ 560 V AC
--------------------	------------------

Release date: 2010-06-01 16:18 Date of issue: 2014-01-13 094572_eng.xml

Refer to "General Notes Relating to Pepperl+Fuchs Product Information".

Pepperl+Fuchs Group
www.pepperl-fuchs.com

USA: +1 330 486 0001
fa-info@us.pepperl-fuchs.com

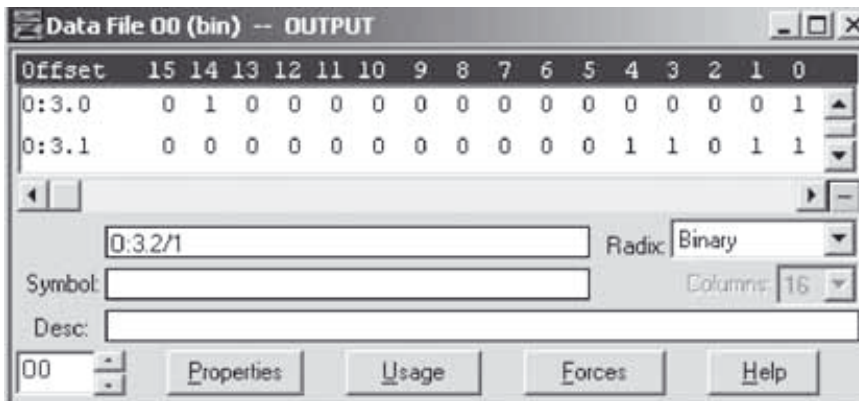
Germany: +49 621 776 4411
fa-info@de.pepperl-fuchs.com

Singapore: +65 6779 9091
fa-info@sg.pepperl-fuchs.com

Rated operating voltage	U_e	... 5 V from backplane
Rated operating current	I_e	50 mA from AS-Interface 120 mA from backplane
Interface		
Protocol		SLC500, backplane
Interface 2		
Interface type		USB
Connection		
AS-Interface		removable terminal block
Ambient conditions		
Ambient temperature		-25 ... 70 °C (-13 ... 158 °F)
Storage temperature		0 ... 50 °C (32 ... 122 °F)
Relative humidity		5 ... 95%
Mechanical specifications		
Protection degree		IP20
Mass		620 g
Construction type		Mounting in backplane of SLC500 rack
Compliance with standards and directives		
Standard conformity		
Electromagnetic compatibility		EN 50081-2, EN 50082-2
AS-Interface		EN 50295
Protection degree		EN 60529
Shock and impact resistance		IEC 68-2-27 IEC 68-2-6
Notes		

DATA MAPPING – SLC500

The SLC 500 scanner works with the SLC 5/03, SLS 5/04, and SLC 5/05



Example of an RS Logix 500 screen capture for SLC500 mapping (slot 3)

MAPPING DATA

Address 1 outputs 1-4 O:3.0/4 - O:3.0/7	Address 5 outputs 1-4 O:3.1/4 - O:3.1/7
Address 2 outputs 1-4 O:3.0/8 - O:3.0/11	Address 6 outputs 1-4 O:3.1/8 - O:3.1/11
Address 3 outputs 1-4 O:3.0/12 - O:3.0/15	Address 7 outputs 1-4 O:3.0/12 - O:3.0/15
Address 4 outputs 1-4 O:3.1/0 - O:3.1/3	...