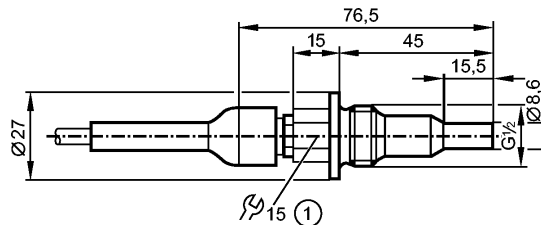


SFR12XBK/6M

Flow sensors



1: tightening torque max. 30 Nm

Product characteristics

Flow sensor for connection to evaluation units

Threaded type

Cable

Process connection: G ½ A

Application

Application

Aggressive liquid media

Pressure rating [bar]

30

Medium temperature [°C]

5...70

Electrical data

Connection to control monitor

VS3000

Measuring / setting range

Liquids

Setting range [cm/s]

3...60

Greatest sensitivity [cm/s]

3...40

Gases

Setting range [cm/s]

-

Greatest sensitivity [cm/s]

-

Accuracy / deviations

Max. temperature gradient of medium [K/min]

7

Reaction times

Response time [s]

2...20

Environment

Protection

IP 67

Tests / approvals

Shock resistance

DIN IEC 68-2-27: 40 g (11 ms)

Vibration resistance

DIN IEC 68-2-6: 10 g (55...2000 Hz)

MTTF [Years]

8213

Mechanical data

Process connection

G ½ A

Materials (wetted parts)

ceramics (99.7 % Al₂O₃)

Housing materials

ceramics (99.7 % Al₂O₃)

Probe length L [mm]

30

Installation length EL [mm]

45

Weight [kg]

0.386

Electrical connection

Connection

PUR / PVC cable / 6 m; 5 x 0.34 mm²

Max. cable length [m]

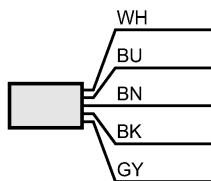
100 (5 x 0.5mm²)

Wiring

SF3410 - Flow sensor for connection to evaluation units - eclass: 27273101 / 27-27-31-01

Core colors

BN brown
 BU blue
 BK black
 WH white
 GY grey



Accessories

Accessories (included)	packing washer PTFE
------------------------	---------------------

Remarks

Remarks	For sealing use the supplied PTFE packing washer.
---------	---

Pack quantity	[piece]	1
---------------	---------	---