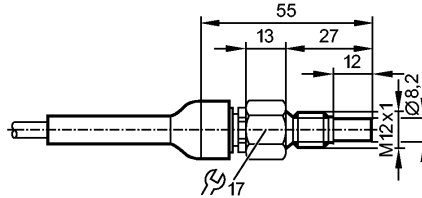


SFM12ADB/1/2G /6M

Flow sensors



Product characteristics

Flow sensor for connection to evaluation units

Threaded type

Cable

Process connection: M12 x 1

Ambient temperature -20...60 °C

ATEX approval

Group II, category 1/2G

Zone 0 / Zone 1

Application

Application

liquids and gases

Pressure rating [bar]

300

Medium temperature [°C]

-20...60

Electrical data

Connection to control monitor

VS2000 Exi (PTB 01 ATEX 2075)

Measuring / setting range

Liquids

Setting range [cm/s]

3...300

Greatest sensitivity [cm/s]

3...60

Gases

Setting range [cm/s]

200...2000 *)

Greatest sensitivity [cm/s]

200...800 *)

Accuracy / deviations

Max. temperature gradient of medium [K/min]

15

Reaction times

Response time [s]

1...10

Environment

Protection

IP 67

Tests / approvals

Approval

DMT 03 ATEX E 090 X

TIIS TC17434

IECEX BVS 11.0017 X

Marking of the unit

Ex II 1/2G Ex ia IIC T4 Ga/Gb

Shock resistance

DIN IEC 68-2-27: 40 g (11 ms)

Vibration resistance

DIN IEC 68-2-6: 10 g (55...2000 Hz)

MTTF [Years]

8648

Safety classification

Internal capacitance [nF]

1.2

Internal inductance [µH]

6

Temperature class

T4

Mechanical data

Process connection

M12 x 1

Materials (wetted parts)

stainless steel 316L / 1.4404

Housing materials

stainless steel 316L / 1.4404

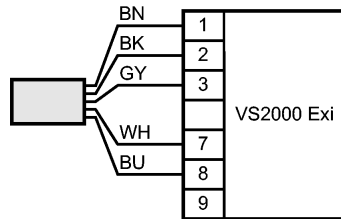
SF111A - Flow sensor for connection to evaluation units - eclass: 27273101 / 27-27-31-01

Probe length L	[mm]	12
Installation length EL	[mm]	27
Weight	[kg]	0.353
Electrical connection		
Connection		TPE-S cable / 6 m; 5 x 0.34 mm ²
Max. cable length	[m]	100 (5 x 0.5mm ²)

Wiring

Core colors

- BN brown
- BU blue
- BK black
- WH white
- GY grey



Remarks

Remarks

In principle, the type test according to 94/9/EC (ATEX) only takes atmospheric conditions (0.8...1.1 bar) into account. For pressures outside this range use must be assessed and approved by the user. Adhere to the operating instructions and the type test certificate.
*) referred to air

Pack quantity	[piece]	1
---------------	---------	---