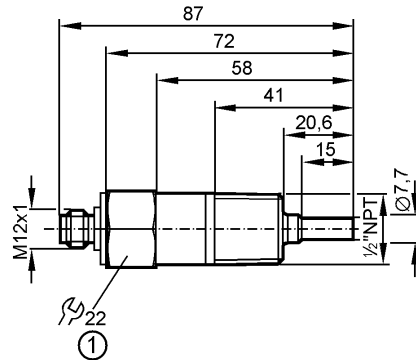


SCN12FFBBOA

Flow sensors



1: Tightening torque max. 100 Nm (with stainless steel adapter) or according to ANSI B1.20.1



Product characteristics

Flow monitor

Compact type

Process connection: 1/2" NPT

Switch point can be set via programming wire:

(10...60 cm/s in steps of 5 cm/s)

Factory setting

15 cm/s

(to water (20 °C) and mounting in 4" pipe)

Application

Application

water

Pressure rating [bar]

25

Medium temperature [°C]

-10...60 *)

Electrical data

Electrical design

AC/DC PNP

Operating voltage [V]

24 AC / 24 DC ¹⁾ ± 15% (AC: 47...63 Hz)

Withstand voltage [V DC]

500

Current consumption [mA]

< 50

Protection class

III

Reverse polarity protection

yes

Outputs

Output function

normally open

Current rating [mA]

80 AC / 80 DC

Voltage drop [V]

< 0.8

Short-circuit protection

no

Overload protection

no

Reaction times

Power-on delay time [s]

15

Response time [s]

1...10

Environment

Ambient temperature [°C]

-20...70

Storage temperature [°C]

-40...70

Protection

IP 67

Tests / approvals

Shock resistance

DIN IEC 68-2-27: 50 g (11 ms)

Vibration resistance

DIN IEC 68-2-6: 20 g (10...2000 Hz)

MTTF [Years]

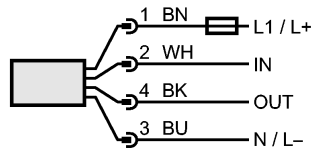
215

SC050R - Flow monitor - eclass: 27273101 / 27-27-31-01

Mechanical data	
Process connection	1/2" NPT
Materials (wetted parts)	stainless steel 316L / 1.4404
Housing materials	stainless steel 316L / 1.4404
Weight [kg]	0.122
Electrical connection	
Connection	M12 connector
Max. cable length [m]	10

Wiring

Core colors
 BK black
 BN brown
 BU blue
 WH white



IN: programming input
 OUT: Switching output
 Note: miniature fuse to IEC60127-2 sheet 1,
 ≤ 2 A (fast acting)
 Colours to DIN EN 60947-5-2

Remarks	
Remarks	*) in case of medium temperatures < 4°C the data refer to water/glycol (40% glycol)
Pack quantity [piece]	1