

Article discontinued as of 31.March 2016

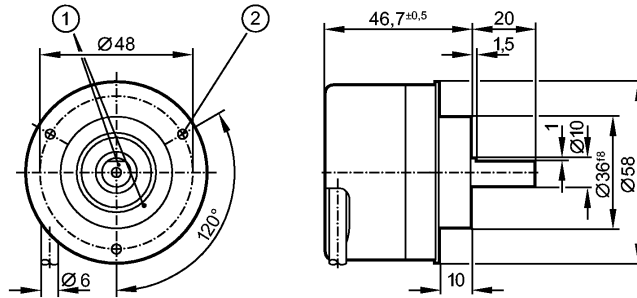
# efector 400<sup>®</sup>

RV6093



RV-3600-I24/L5

Encoders



1: reference mark  
2: M3 5 mm deep



## Product characteristics

Solid shaft encoder

HTL-output 50 mA, short-circuit protected, < 1 min

Cable

6 signals

Resolution 3600

Electrical data

Operating voltage [V]

10...30 DC

Current consumption [mA]

< 150

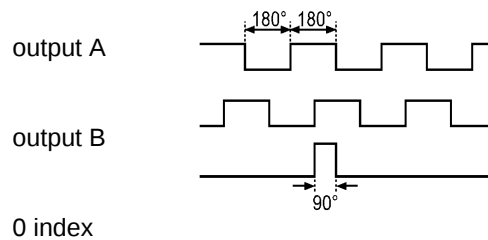
Phase difference A und B [°]

90

Switching frequency [kHz]

300

Pulse diagram



Outputs

Output function

HTL-output 50 mA, short-circuit protected, < 1 min

Measuring / setting range

Encoders

Resolution

3600

Mechanical data

Max. permissible rpm / mech. [1/min]

12000

Starting torque [Ncm]

< 1 (20 °C)

Max. shaft load (at the shaft end) [N]

axial 10; radial 20

Shaft, material [mm]

$\varnothing 10$ , steel (1.4104)

Vibration resistance

30 g

Shock resistance

200 g

Housing materials

aluminum

Weight [kg]

0.665

Environment

Max. relative air humidity [%]

max. 98

Ambient temperature [°C]

-40...100, -40 °C for firmly laid cable

Protection

IP 64; IP 67 (housing); IP 64 (shaft)

# RV6093 - Solid shaft encoder - eclass: 27270590 / 27-27-05-90

Tests / approvals

MTTF	[Years]	190
------	---------	-----

Electrical connection

Connection	PUR cable / 5 m; radial, can also be used axially	
------------	---	--

Max. cable length	[m]	300
-------------------	-----	-----

## Wiring

brown: A  
green: A (inv.)  
grey: B  
pink: B (inv.)  
red: 0 index  
black: 0 index (inv.)  
blue: L+ (sensor)  
white: 0V (sensor)  
brown/green: L+ (Up)  
white/green: 0V (Un)  
lilac: error (inv.)  
screen: housing

Remarks

Pack quantity	[piece]	1
---------------	---------	---

ifm efector, inc. • 1100 Atwater Drive • Malvern • PA 19355 — We reserve the right to make technical alterations without prior notice. — US — RV6093 — 01.09.2010

Article discontinued as of 31.March 2016