

Article discontinued as of 31.December 2016

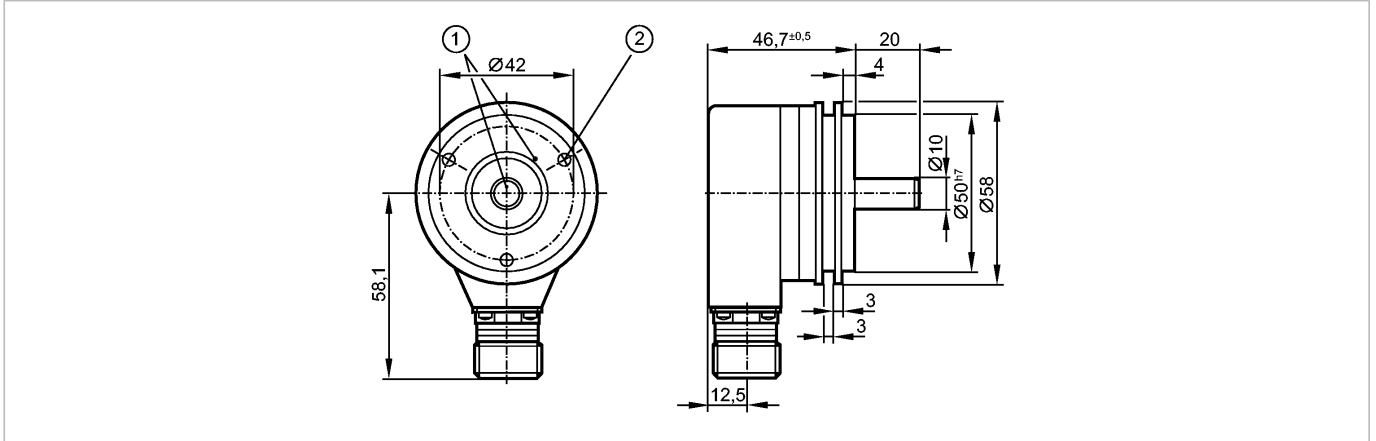
efector 400[®]

RN6057



RN-4096-S24/K B

Encoders



Product characteristics

Singleturn

SSI data interface

Quick disconnect

SSI data interface

Resolution 4096

Electrical data

Operating voltage

[V]

4.75...30 DC

Current consumption

[mA]

< 160

Code

Gray code; increasing code values when turned clockwise (seen on the shaft)

Code signal

Clock input:

TTL compatible signals,
clock and clock (inv.) from driver to RS 485

Data output:

synchronous serial,

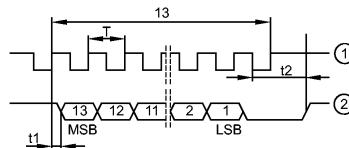
TTL compatible signals data and data (inv.)

Incremental signals:

2 sinusoidal incremental signals (A and B)
with 90° phase difference,

1 Vss 512 signal periods per revolution

Pulse diagram



1 clock

2 data

Outputs

Output function

SSI data interface

Measuring / setting range

Encoders

Resolution

4096 steps / 12 bits

Mechanical data

Max. permissible rpm / mech. [1/min]

12000

Starting torque [Ncm]

< 1 (20 °C)

Max. shaft load (at the shaft end) [N]

axial 10; radial 20

Shaft, material [mm]

Ø 10, steel (1.4104)

Vibration resistance

30 g (55...2000 Hz)

Shock resistance

100 g (6 ms)

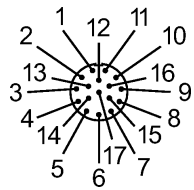
Housing materials

aluminum

Weight [kg]

0.442

RN6057 - Singleturn - eclass: 27270590 / 27-27-05-90

Environment		
Max. relative air humidity	[%]	75 *)
Ambient temperature	[°C]	-40...85
Protection		IP 64
Tests / approvals		
MTTF	[Years]	46
Electrical connection		
Connection		M23 flange plug; radial; ifm 1001.11
Max. cable length	[m]	100
Wiring		
1: n.c.	10: 0v Un	
2: n.c.	11: housing	
3: n.c.	12: B (+)	
4: n.c.	13: B (-)	
5: n.c.	14: data	
6: n.c.	15: A (+)	
7: L+ Up	16: A (-)	
8: clock	17: data	
9: clock (inv.)	(inv.)	
Remarks		
Remarks		Wires/pins not connected (n.c.) must not be used! T = 1...10 μs / t1 ≤ 0.4 μs (without cable) / t2 = 17...20 μs (waiting time) *) for a short time 95%
Pack quantity	[piece]	1