

no longer available - archive entryDiscontinued article

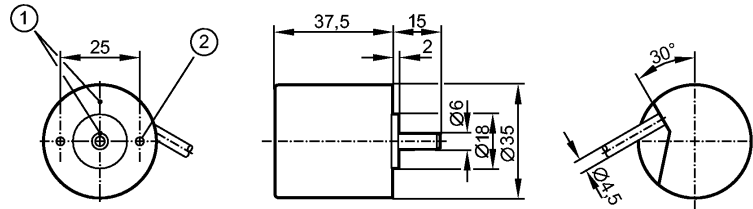
efector 400[®]

RB6025



RB-0036-I24/L2

Encoders



1: reference mark
2: M3 5 mm deep



Product characteristics

Solid shaft encoder

HTL-output 50 mA, short-circuit protected, < 1 min

Cable

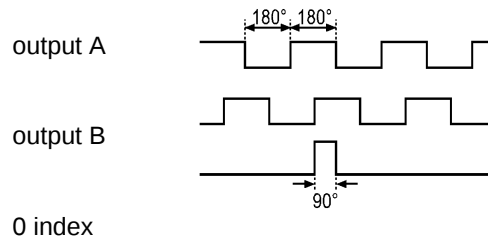
Resolution 36

Electrical data

| | |
|--------------------------|-------|
| Operating voltage | [V] |
| Current consumption | [mA] |
| Phase difference A und B | [°] |
| Switching frequency | [kHz] |

| |
|------------|
| 10...30 DC |
| 150 |
| 90 |
| 160 |

Pulse diagram



Outputs

Output function

HTL-output 50 mA, short-circuit protected, < 1 min

Measuring / setting range

Encoders

Resolution

36

Mechanical data

Max. permissible rpm / mech. [1/min]

10000

Starting torque [Ncm]

< 1 (20 °C)

Max. shaft load (at the shaft end) [N]

axial 5; radial 10

Shaft, material [mm]

Ø 6, steel (1.4104)

Vibration resistance

10 g (55...2000 Hz)

Shock resistance

100 g (6 ms)

Housing materials

aluminum

Weight [kg]

0.26

Environment

Max. relative air humidity [%]

75, for a short time 95%

Ambient temperature [°C]

-30...70

Protection

IP 64

Electrical connection

Connection

PUR cable / 2 m; radial, can also be used axially

Wiring

brown: A

RB6025 - Solid shaft encoder - eclass: 27270590 / 27-27-05-90

green: 0 V A
grey: B
pink: 0 V B
red: 0 index
black: 0 V 0 index
brown/green: L+ (Up)
white/green: L- 0 V (Un)
lilac: error (inv.)
screen: housing

Remarks

Pack quantity [piece] 1

ifm efector, inc. • 1100 Atwater Drive • Malvern • PA 19355 — We reserve the right to make technical alterations without prior notice. — US — RB6025 — 12.04.2013
no longer available - archive entryDiscontinued article