

Alternative article: RB3500

When selecting an alternative article and accessories please note that technical data may differ!

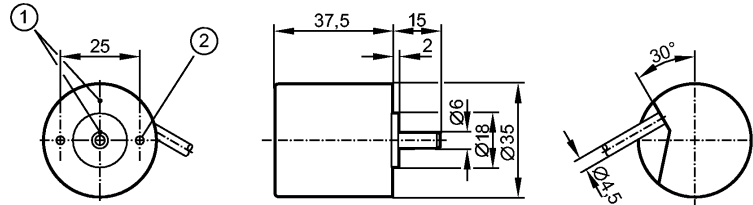
efector 400

RB6010



RB-0150-I24/L2

Encoders



1: reference mark

2: M3 5 mm deep



Product characteristics

Solid shaft encoder

HTL-output 50 mA, short-circuit protected, < 1 min

Cable

Resolution 150

Electrical data

Operating voltage [V]

10...30 DC

Current consumption [mA]

150

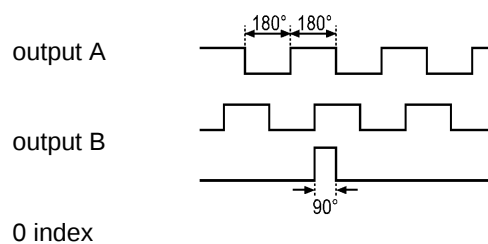
Phase difference A und B [°]

90

Switching frequency [kHz]

160

Pulse diagram



Outputs

Output function

HTL-output 50 mA, short-circuit protected, < 1 min

Measuring / setting range

Encoders

Resolution

150

Mechanical data

Max. permissible rpm / mech. [1/min]

10000

Starting torque [Ncm]

< 1 (20 °C)

Max. shaft load (at the shaft end) [N]

axial 5; radial 10

Shaft, material [mm]

$\varnothing 6$, steel (1.4104)

Vibration resistance

10 g (55...2000 Hz)

Shock resistance

100 g (6 ms)

Housing materials

aluminum

Weight [kg]

0.262

Environment

Max. relative air humidity [%]

75, for a short time 95%

Ambient temperature [°C]

-40...70, firmly laid cable

Protection

IP 64

Tests / approvals

MTTF [Years]

190

Electrical connection

RB6010 - Solid shaft encoder - eclass: 27270590 / 27-27-05-90

| | |
|---------------|---|
| Connection | PUR cable / 2 m; radial, can also be used axially |
| Wiring | |
| brown: | A |
| green: | 0 V A |
| grey: | B |
| pink: | 0 V B |
| red: | 0 index |
| black: | L- 0 V 0 index |
| brown/green: | L+ (Up) |
| white/green: | L- 0 V (Un) |
| lilac: | error (inv.) |
| screen: | housing |
| Remarks | |
| Pack quantity | [piece] 1 |

ifm efector, inc. • 1100 Atwater Drive • Malvern • PA 19355 — We reserve the right to make technical alterations without prior notice. — US — RB6010 — 12.04.2013

Alternative article: RB3500

When selecting an alternative article and accessories please note that technical data may differ!