

Alternative article: RB3500

When selecting an alternative article and accessories please note that technical data may differ!

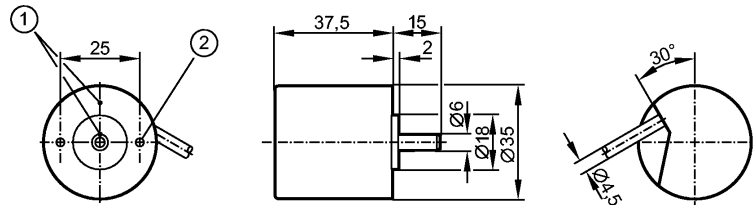
efector 400

RB6002



RB-0020-I24/L2

Encoders



1: reference mark
2: M3 5 mm deep



Product characteristics

Solid shaft encoder

HTL-output 50 mA, short-circuit protected, < 1 min

Cable

Resolution 20

Electrical data

Operating voltage [V]

10...30 DC

Current consumption [mA]

150

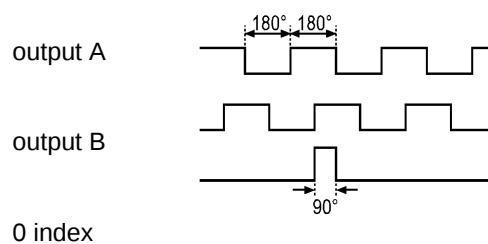
Phase difference A und B [°]

90

Switching frequency [kHz]

160

Pulse diagram



Outputs

Output function

HTL-output 50 mA, short-circuit protected, < 1 min

Measuring / setting range

Encoders

Resolution

20

Mechanical data

Max. permissible rpm / mech. [1/min]

10000

Starting torque [Ncm]

< 1 (20 °C)

Max. shaft load (at the shaft end) [N]

axial 5; radial 10

Shaft, material [mm]

Ø 6, steel (1.4104)

Vibration resistance

10 g (55...2000 Hz)

Shock resistance

100 g (6 ms)

Housing materials

aluminum

Weight [kg]

0.259

Environment

Max. relative air humidity [%]

75, for a short time 95%

Ambient temperature [°C]

-40...70, firmly laid cable

Protection

IP 64

Tests / approvals

MTTF [Years]

190

Electrical connection

RB6002 - Solid shaft encoder - eclass: 27270590 / 27-27-05-90

Connection	PUR cable / 2 m; radial, can also be used axially
Wiring	
brown:	A
green:	0 V A
grey:	B
pink:	0 V B
red:	0 index
black:	0 V 0 index
brown/green:	L+ (Up)
white/green:	L- 0 V (Un)
lilac:	error (inv.)
screen:	housing
Remarks	
Pack quantity	[piece] 1

ifm efector, inc. • 1100 Atwater Drive • Malvern • PA 19355 — We reserve the right to make technical alterations without prior notice. — US — RB6002 — 12.04.2013

Alternative article: RB3500

When selecting an alternative article and accessories please note that technical data may differ!