

Alternative article: RB3500

When selecting an alternative article and accessories please note that technical data may differ!

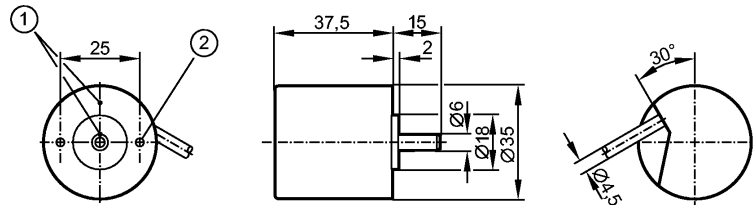
efector 400

RB1015



RB-0500-I05/L2

Encoders



1: reference mark

2: M3 5 mm deep



Product characteristics

Solid shaft encoder

TTL output 20 mA

Cable

6 signals

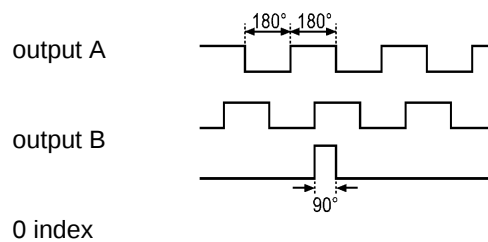
Resolution 500

Electrical data

Operating voltage	[V]
Current consumption	[mA]
Phase difference A und B	[°]
Switching frequency	[kHz]

5 DC ± 0.5
120
90
300

Pulse diagram



Outputs

Output function

TTL output 20 mA

Measuring / setting range

Encoders

Resolution

500

Mechanical data

Max. permissible rpm / mech. [1/min]

10000

Starting torque [Ncm]

< 1 (20 °C)

Max. shaft load (at the shaft end) [N]

axial 5; radial 10

Shaft, material [mm]

Ø 6, steel (1.4104)

Vibration resistance

10 g (55...2000 Hz)

Shock resistance

100 g (6 ms)

Housing materials

aluminum

Weight [kg]

0.268

Environment

Max. relative air humidity [%]

75, for a short time 95%

Ambient temperature [°C]

-40...100, firmly laid cable

Protection

IP 64

Tests / approvals

MTTF [Years]

190

RB1015 - Solid shaft encoder - eclass: 27270590 / 27-27-05-90

Electrical connection

Connection

PUR cable / 2 m; radial, can also be used axially

Wiring

brown: A
green: A (inv.)
grey: B
pink: B (inv.)
red: 0 index
black: 0 index (inv.)
brown/green: L+ (Up)
white/green: L- 0 V (Un)
blue: L+ sensor
white: L- 0 V sensor
lilac: error (inv.)
screen: housing

Remarks

Pack quantity

[piece]

1

ifm efector, inc. • 1100 Atwater Drive • Malvern • PA 19355 — We reserve the right to make technical alterations without prior notice. — US — RB1015 — 18.12.2014

Alternative article: RB3500

When selecting an alternative article and accessories please note that technical data may differ!