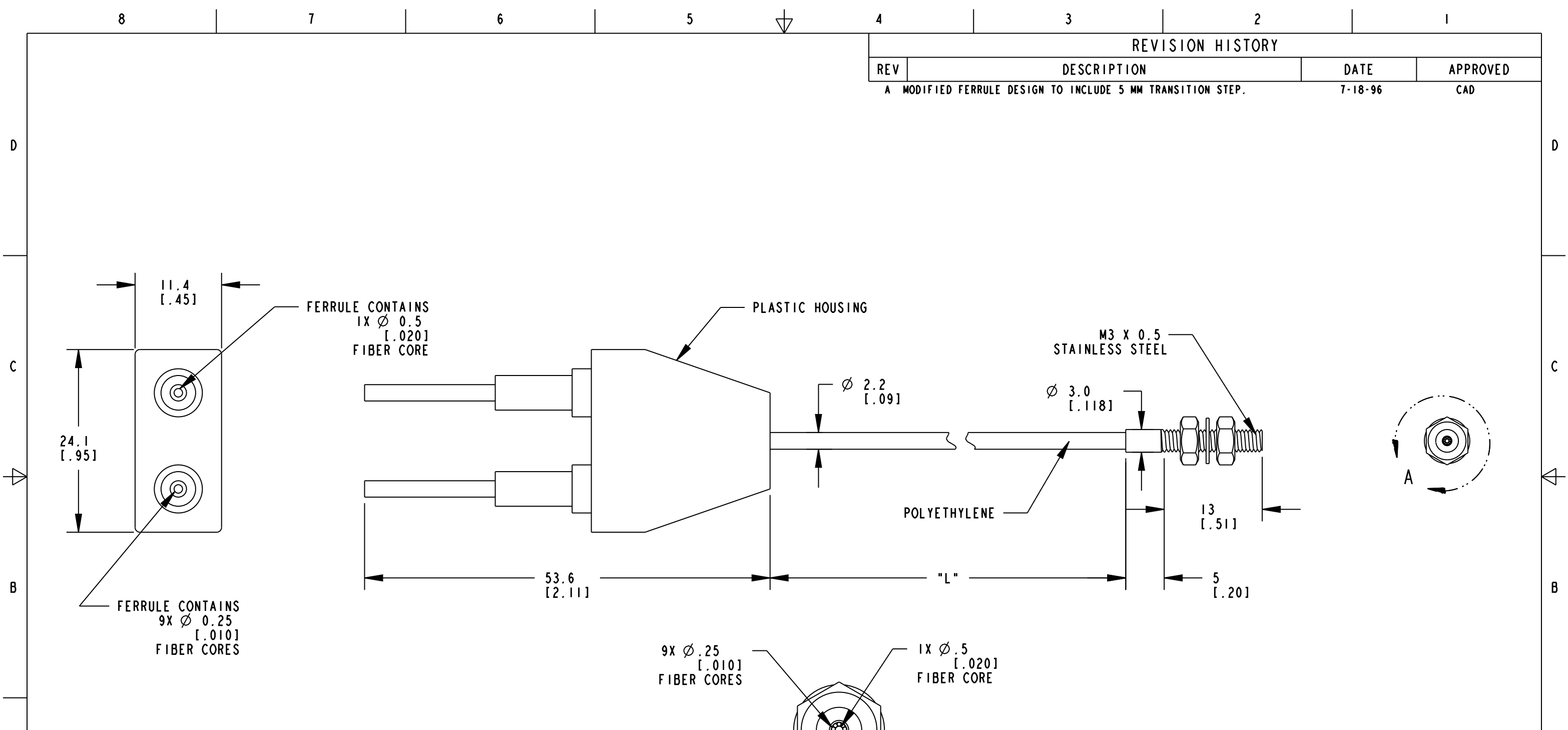
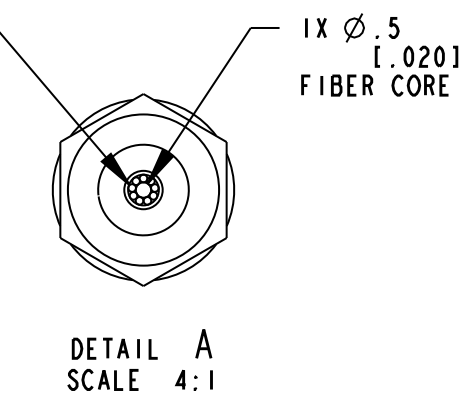



REVISION HISTORY			
REV	DESCRIPTION	DATE	APPROVED
A	MODIFIED FERRULE DESIGN TO INCLUDE 5 MM TRANSITION STEP.	7-18-96	CAD



MODEL NO.	"L"	P/N
PBCT23TIM3	1000 [39]	41553

NOTES:  
 1. "TI" SUFFIX DICTATES FIBER TO BE USED WITH OMNI-BEAM & Q45 "FP" MODEL SENSORS.



REV.	DESCRIPTION	DATE	INITIAL
Dimensions are Millimeters [inches] <b>TOLERANCES</b> (Unless Otherwise Specified) X = ±0.5mm X.X = ±0.25 X.XX = ±0.12mm [X.X = ±.1"] [XX = ±.01"] [XXX = ±.005"] ANGLE = ±3° *L = 40mm/Meter [1.5"/Foot]		 <b>BANNER ENGINEERING Corp.</b> 9717 10th Ave. North Minneapolis, MN 55441 Tel # 763-544-3164 Fax # 763-544-3573 www.bannerengineering.com	
PBCT23TIM3		PLASTIC FIBEROPTIC ASSEMBLY & MOD'S	
3-19-96	I OF I	41553	A