

no longer available - archive entry Alternative article: OJ5009

When selecting an alternative article and accessories please note that technical data may differ!

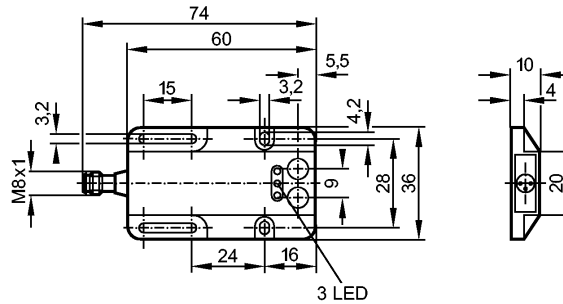
efector200

OW1011



OWE-FPKG/AS

Photoelectric sensors



Receiver in lower and upper lens



Product characteristics

Through-beam sensor

Rectangular, plastics

Quick disconnect

Receiver

Sensing range 4m

Electrical data

Electrical design

DC PNP

Operating voltage [V]

10...36 DC

Current consumption [mA]

25 (36 V)

Type of light

red light 660 nm

Protection class

III

Reverse polarity protection

yes

Outputs

Output function

light-on / dark-on programmable

Voltage drop [V]

< 2.5

Current rating [mA]

200

Short-circuit protection

yes (non-latching)

Overload protection

yes

Switching frequency [Hz]

250

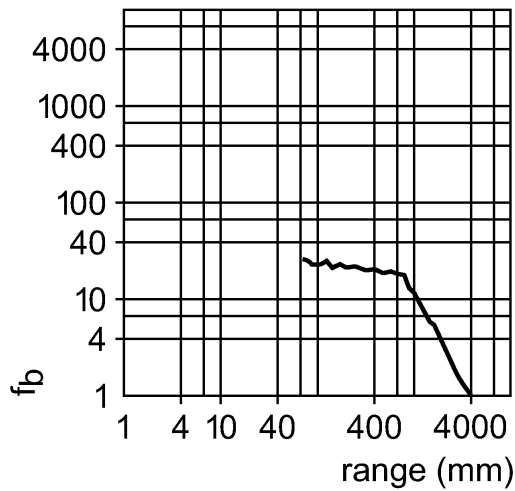
Monitoring range

Sensing range [m]

4

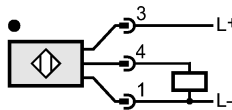
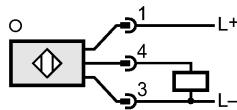
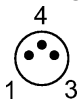
Excess gain graphs

OW1011 - Through-beam sensor - eclass: 27270901 / 27-27-09-01



Environment		
Ambient temperature	[°C]	-25...60
Protection		IP 65
Tests / approvals		
EMC		EN 60947-5-2 EN 55011: class B
MTTF	[Years]	878
Mechanical data		
Housing materials		ABS (glass fiber reinforced)
Lens material		PMMA
Weight	[kg]	0.031
Displays / operating elements		
Output status indication	LED	yellow
Power	LED	green
Function display	LED	red
Electrical connection		
Connection		M8 connector

Wiring



Remarks

Pack quantity	[piece]	1
---------------	---------	---

ifm efector, inc. • 1100 Atwater Drive • Malvern • PA 19355 — We reserve the right to make technical alterations without prior notice. — US — OW1011 — 06.03.2003
no longer available - archive entry Alternative article: OJ5009

When selecting an alternative article and accessories please note that technical data may differ!