

no longer available - archive entry Alternative article: OJ5008

When selecting an alternative article and accessories please note that technical data may differ!

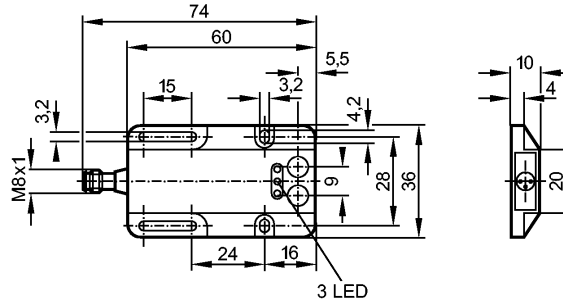
**efector200**

OW1010



OWS-OOKG/AS

Photoelectric sensors



transmitter in lower lens



Product characteristics

Through-beam sensor

Rectangular, plastics

Quick disconnect

Transmitter

Sensing range 4m

Electrical data

Electrical design

DC

Operating voltage [V]

10...36 DC

Current consumption [mA]

15 (36 V)

Type of light

red light 660 nm

Protection class

III

Reverse polarity protection

yes

Outputs

Overload protection

yes

Monitoring range

Sensing range [m]

4

Light spot diameter [mm]

320 ( at maximum range )

Environment

Ambient temperature [°C]

-25...60

Protection

IP 65

Tests / approvals

EMC

EN 60947-5-2

EN 55011:

class B

MTTF [Years]

1502

Mechanical data

Housing materials

ABS (glass fiber reinforced)

Lens material

PMMA

Weight [kg]

0.029

Displays / operating elements

Power LED

green

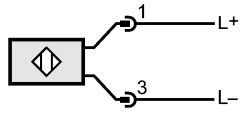
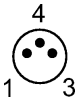
Electrical connection

Connection

M8 connector

**Wiring**

OW1010 - Through-beam sensor - eclass: 27270901 / 27-27-09-01



Remarks

Pack quantity [piece] 1

ifm efector, inc. • 1100 Atwater Drive • Malvern • PA 19355 — We reserve the right to make technical alterations without prior notice. — US — OW1010 — 06.03.2003  
no longer available - archive entryAlternative article: OJ5008

When selecting an alternative article and accessories please note that technical data may differ!