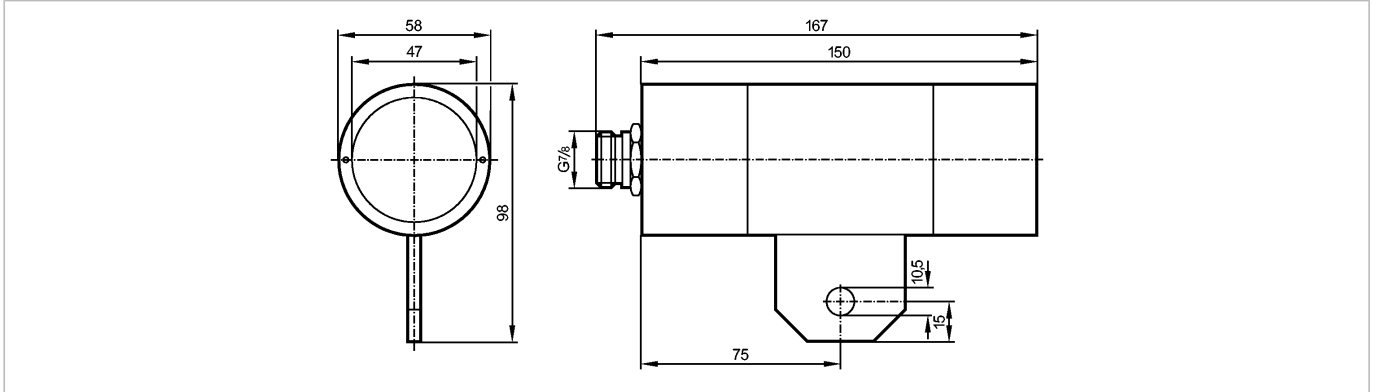




OWS-7520-ABOA

Temperature sensors



Product characteristics

Infrared heat sensor

Metal housing

Quick disconnect

Switching temperature 750 °C

Angle of aperture 2°

Electrical data

Electrical design

Operating voltage [V]

Reverse polarity protection

Outputs

Output function

Voltage drop [V]

Minimum load current [mA]

Leakage current [mA]

**Current rating**

- Current rating (continuous) [mA]

- Current rating (peak) [mA]

Short-circuit proof

Overload protection

Switching frequency [Hz]

Monitoring range

Hysteresis [%]

Environment

Ambient temperature [°C]

Protection

Tests / approvals

EMC

Mechanical data

Housing materials

Lens material

Weight [kg]

Displays / operating elements

Output status indication LED

Electrical connection

Connection

**Wiring**

AC/DC

20...250 AC/DC

no

normally open

< 10.5

15

7

200 AC / 50 DC; 250 AC (...50 °C)

î: 1.5 A (10 ms / 0.5 Hz)

no

no

20 AC / 25 DC

1...15

-20...60

IP 65

EN 60947-5-2

EN 55011:

class B

brass white bronze coated

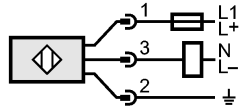
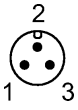
glass

1.26

yellow

7/8" connector

OW0006 - Infrared heat sensor - eclass: 27270903 / 27-27-09-03



Note: miniature fuse to IEC60127-2 sheet 1,  
 $\leq 2$  A (fast acting)

|               |   |
|---------------|---|
| Remarks       |   |
| Remarks       | Recommendation: check the unit for reliable function after a short circuit. |
| Pack quantity | [piece] 1   |