

no longer available - archive entry replaced by: TW7001 + E35065

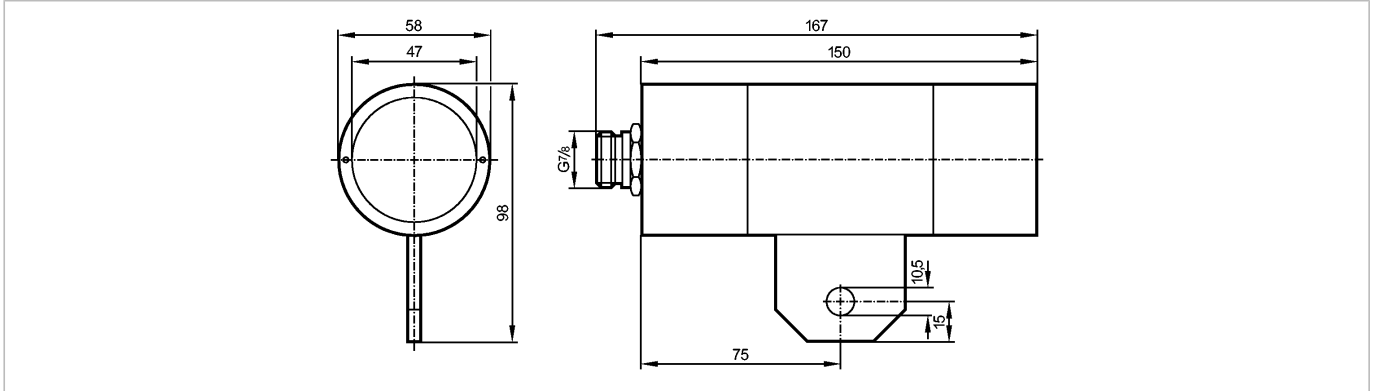
**efector600**

OW0004



OWS-3520-ABOA

Temperature sensors



Product characteristics

Infrared heat sensor

Metal housing

Quick disconnect

Switching temperature 350 °C

Angle of aperture 2°

Electrical data

Electrical design

AC/DC

Operating voltage [V]

20...250 AC/DC

Reverse polarity protection

no

Outputs

Output function

normally open

Voltage drop [V]

< 10.5

Minimum load current [mA]

15

Leakage current [mA]

7

**Current rating**

- Current rating (continuous) [mA]

200 AC / 50 DC; 250 AC (...50 °C)

- Current rating (peak) [mA]

î: 1.5 A (10 ms / 0.5 Hz)

Short-circuit proof

no

Overload protection

no

Switching frequency [Hz]

20 AC / 25 DC

Monitoring range

Hysteresis [%]

1...15

Environment

Ambient temperature [°C]

-20...60

Protection

IP 65

Tests / approvals

EMC

EN 60947-5-2

EN 55011:

class B

Mechanical data

Housing materials

brass white bronze coated

Lens material

glass

Weight [kg]

1.27

Displays / operating elements

Output status indication LED

yellow

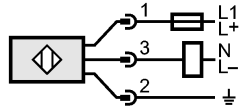
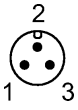
Electrical connection

Connection

7/8" connector

**Wiring**

OW0004 - Infrared heat sensor - eclass: 27270903 / 27-27-09-03



Note: miniature fuse to IEC60127-2 sheet 1,  
 $\leq 2$  A (fast acting)

Remarks	
Remarks	Recommendation: check the unit for reliable function after a short circuit.
Pack quantity	[piece] 1

ifm efector, inc. • 1100 Atwater Drive • Malvern • PA 19355 — We reserve the right to make technical alterations without prior notice. — US — OW0004 — 06.03.2003  
 no longer available - archive entryreplaced by: TW7001 + E35065