

no longer available - archive entry

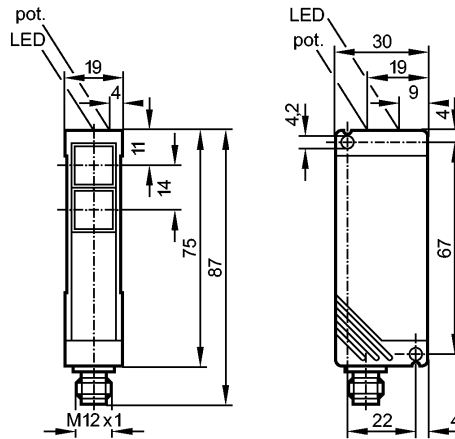
**efector200**

OT5018



OTP-FNKG/US-100-INF

Photoelectric sensors



Receiver in lower lens, Transmitter in upper lens



Product characteristics

Retro-reflective sensor

Rectangular, plastics

Quick disconnect

Polarization filter

Sensing range 0.2...2m (Prismatic reflector Ø 80 (E20005))

adjustable

Electrical data

Electrical design

Operating voltage [V]

Current consumption [mA]

Type of light

Protection class

Reverse polarity protection

Outputs

Output function

Voltage drop [V]

Current rating [mA]

Short-circuit protection

Overload protection

Switching frequency [Hz]

Monitoring range

Sensing range [m]

Light spot diameter [mm]

Excess gain graphs

DC NPN

10...50 DC

35 (24 V)

red light 660 nm

II

yes

light-on / dark-on programmable

< 2.5

250

yes (non-latching)

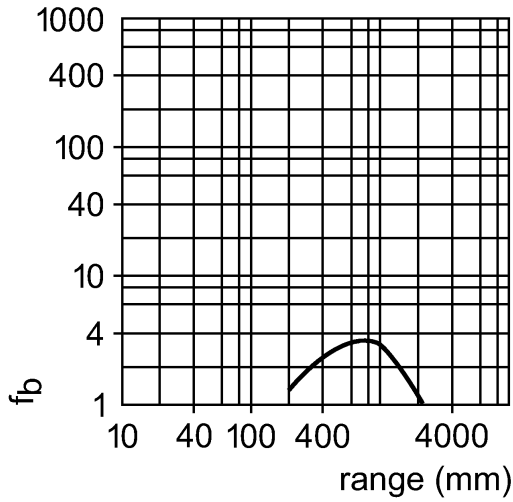
yes

150

0.2...2 (Prismatic reflector Ø 80 (E20005))

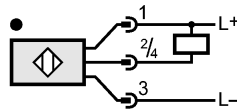
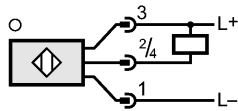
280 ( at maximum range )

**OT5018 - Retro-reflective sensor - eclass: 27270902 / 27-27-09-02**



Environment	
Ambient temperature [°C]	-25...60
Protection	IP 65
Tests / approvals	
EMC	EN 60947-5-2 EN 55011: class B
Mechanical data	
Housing materials	PBT
Lens material	PMMA
Weight [kg]	0.07
Displays / operating elements	
Output status indication LED	yellow
Power LED	green
Electrical connection	
Connection	M12 connector

**Wiring**



Accessories	
Accessories (included)	Angle bracket; E20461; screwdriver
Remarks	
Pack quantity [piece]	1