

Article discontinued as of 31.March 2016

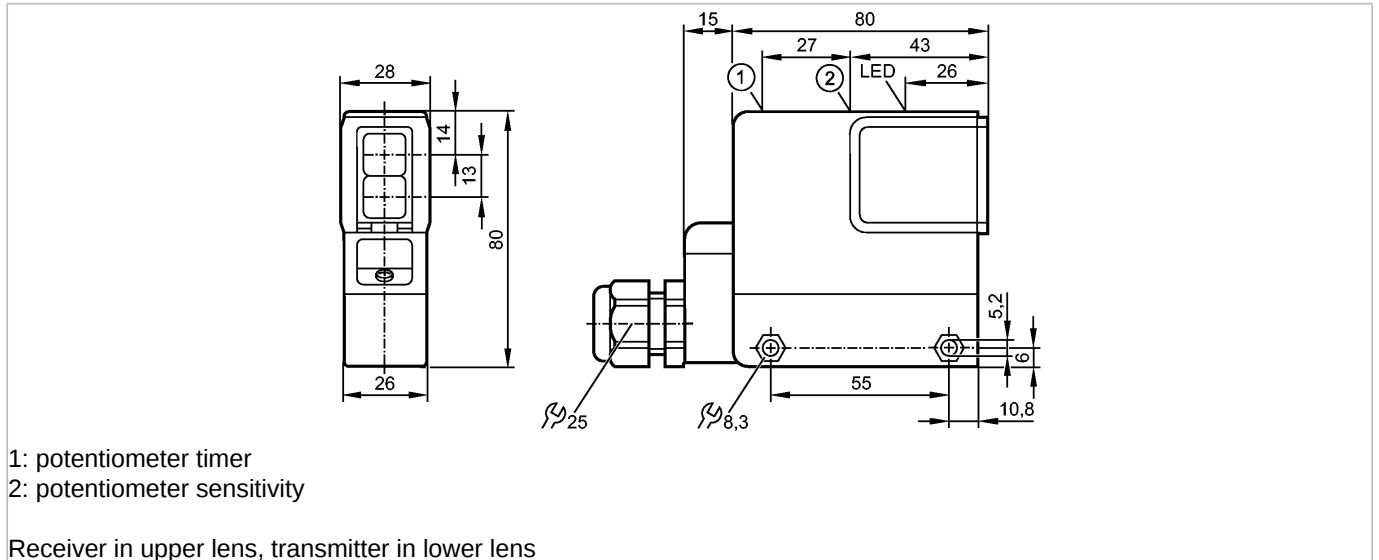
**efector200**

OS0031



OST-FBOA/T

Photoelectric sensors



Product characteristics

Diffuse reflection sensor

Rectangular, plastics

Terminals

Range 1000mm (referred to white paper 200 x 200 mm)

adjustable

Electrical data

Electrical design

Operating voltage [V]

Type of light

Protection class

Reverse polarity protection

Outputs

Output function

Voltage drop [V]

Minimum load current [mA]

Leakage current [mA]

**Current rating**

- Current rating (continuous) [mA]

- Current rating (peak) [mA]

Short-circuit proof

Overload protection

Switching frequency [Hz]

Timer [s]

Monitoring range

Range [mm]

Environment

Ambient temperature [°C]

Protection

Tests / approvals

EMC

MTTF [Years]

Mechanical data

AC/DC

20...250 AC/DC

Infrared light 880 nm

II

no

light-on / dark-on programmable

< 10.5

15

< 8

250; 350 (...50 °C)

î: 2.2 A (10 ms / 0.5 Hz)

no

no

25

0.01...5

1000 (referred to white paper 200 x 200 mm)

-25...80

IP 65

EN 60947-5-2

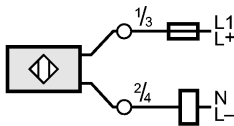
EN 55011: class B

261

**OS0031 - Diffuse reflection sensor - eclass: 27270903 / 27-27-09-03**

Housing materials	modified PPO
Lens material	glass
Weight [kg]	0.269
Displays / operating elements	
Output status indication LED	yellow
Electrical connection	
Connection	terminals up to 1.5 mm <sup>2</sup> ; cable diameter 5...10 mm, cable gland M20 x 1.5

**Wiring**



Note: miniature fuse to IEC60127-2 sheet 1, ≤ 2 A (fast acting)

Accessories	
Accessories (included)	Angle bracket; E20210; screwdriver
Remarks	
Remarks	Recommendation: check the unit for reliable function after a short circuit.
Pack quantity [piece]	1