

no longer available - archive entry Alternative article: OL0006

When selecting an alternative article and accessories please note that technical data may differ!

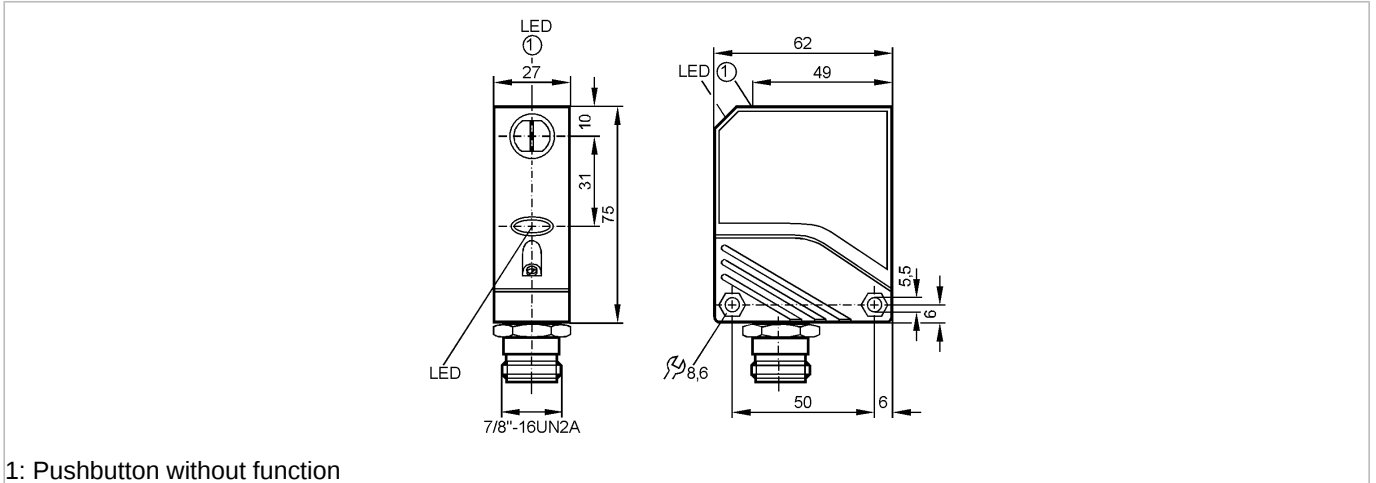
efector200

OL0012



OLS-000A/SL/LS-500

Photoelectric sensors



1: Pushbutton without function



Product characteristics

Through-beam sensor

Rectangular, plastics

Quick disconnect

Transmitter

Sensing range 25m

Electrical data

Electrical design

Operating voltage [V]

Power consumption [VA]

Type of light

Life expectancy typ. [h]

Protection class

Reverse polarity protection

Outputs

Short-circuit proof

Overload protection

Monitoring range

Sensing range [m]

Light spot diameter [mm]

Environment

Ambient temperature [°C]

Protection

Tests / approvals

EMC

MTTF [Years]

Mechanical data

Housing materials

Lens material

Weight [kg]

Displays / operating elements

Power LED

Electrical connection

Connection

AC/DC

20...250 AC/DC (47...63 Hz AC)

< 4

Infrared light 880 nm

100000 (25 °C)

I

no

no

no

25

< 2000 (at maximum range)

-25...80

IP 67

EN 60947-5-2

EN 55011:

class B

316

PA; PBT

PMMA

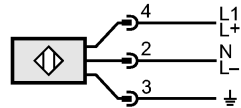
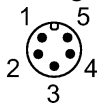
0.196

green

7/8" connector

OL0012 - Through-beam sensor - eclass: 27270901 / 27-27-09-01

Wiring



Note: miniature fuse to IEC60127-2 sheet 1,
 ≤ 2 A (fast acting)

Remarks

Remarks

Recommendation: check the unit for reliable function after a short circuit.

Pack quantity

[piece]

1

ifm efector, inc. • 1100 Atwater Drive • Malvern • PA 19355 — We reserve the right to make technical alterations without prior notice. — US — OL0012 — 06.03.2003
 no longer available - archive entry Alternative article: OL0006

When selecting an alternative article and accessories please note that technical data may differ!