

no longer available - archive entry Alternative article: OJ5068

When selecting an alternative article and accessories please note that technical data may differ!

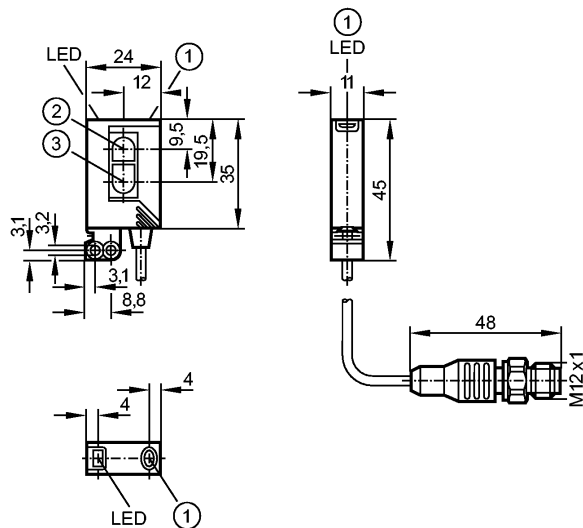
efector200

OJ5089



OJH-FPKG/FO/1M/US

Photoelectric sensors



1: pushbutton

2: Receiver

3: Transmitter



Product characteristics

Diffuse reflection sensor

Rectangular, plastics

Cable with connector

Electronic lock

External teach function

Front sensing

Background suppression

Range 15...400mm (Range referred to white paper 200 x 200 mm, 90 % remission)

adjustable

Electrical data

Electrical design

DC PNP

Operating voltage [V]

10...30 DC

Current consumption [mA]

25

Type of light

red light 660 nm

Protection class

III

Reverse polarity protection

yes

Outputs

Output function

light-on / dark-on programmable

Voltage drop [V]

< 2.5

Current rating [mA]

200

Short-circuit protection

yes (non-latching)

Overload protection

yes

Switching frequency [Hz]

1000

Monitoring range

Range [mm]

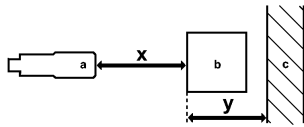
15...400 (Range referred to white paper 200 x 200 mm, 90 % remission)

Light spot diameter [mm]

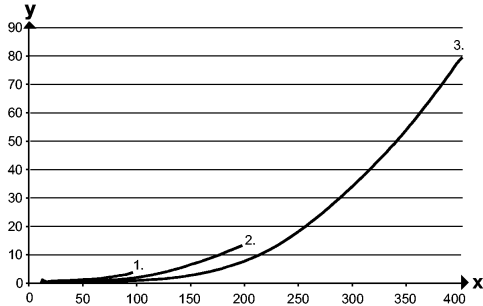
< 18 (Range 150 mm)

Background suppression chart

OJ5089 - Diffuse reflection sensor - eclass: 27270903 / 27-27-09-03



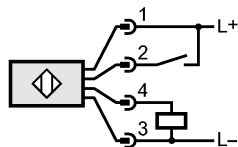
a: sensor
 b: object
 c: background
 x: distance sensor / object
 y: min. distance object / background



Values in [mm]
 1 = object black (6 % remission), background white (90 % remission)
 2 = object gray (18 % remission), background white (90 % remission)
 3 = object white (90 % remission), background white (90 % remission)

Environment	
Ambient temperature [°C]	-25...60
Protection	IP 67
Tests / approvals	
EMC	EN 60947-5-2
MTTF [Years]	556
Mechanical data	
Housing materials	housing: ABS; fixture: diecast zinc; LED window: SEPS; pushbutton: SEPS; connector body: PUR; connector thread: brass
Lens material	PMMA
Weight [kg]	0.064
Displays / operating elements	
Output status indication	LED yellow
Power	LED green
Electrical connection	
Connection	PUR cable / 1 m; gold-plated contacts, with M12 connector

Wiring



2: Teach

Accessories	
Accessories (included)	Basic clip; E20964; 2 mounting screws; M3 x 16; 2 spring washers; 2 nuts
Remarks	
Remarks	cULus - Class 2 source required
Pack quantity [piece]	1

ifm efector, inc. • 1100 Atwater Drive • Malvern • PA 19355 — We reserve the right to make technical alterations without prior notice. — US — OJ5089 — 25.05.2011

no longer available - archive entry Alternative article: OJ5068

When selecting an alternative article and accessories please note that technical data may differ!