

- 1: pushbutton
- 2: Receiver
- 3: Transmitter



Product characteristics
Diffuse reflection sensor
Rectangular, plastics
Cable with connector
Electronic lock
External teach function
Background suppression
Side sensing

Range 15...400mm (Range referred to white paper 200 x 200 mm, 90 % remission)
adjustable

Electrical data

Electrical design

Operating voltage	[V]
Current consumption	[mA]
Type of light	
Protection class	
Reverse polarity protection	

DC PNP

10...30 DC

25

red light 660 nm

III

yes

Outputs

Output function	
Voltage drop	[V]
Current rating	[mA]
Short-circuit protection	
Overload protection	
Switching frequency	[Hz]

light-on / dark-on programmable

< 2.5

200

yes (non-latching)

yes

1000

Monitoring range

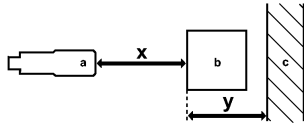
Range	[mm]
Light spot diameter	[mm]

15...400 (Range referred to white paper 200 x 200 mm, 90 % remission)

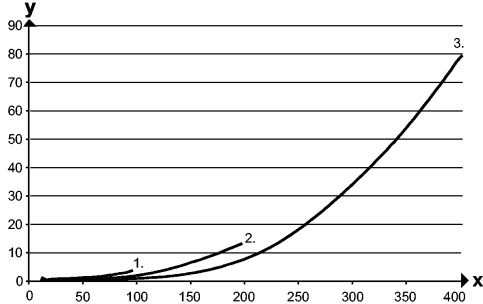
< 18 (Range 150 mm)

Background suppression chart

OJ5078 - Diffuse reflection sensor - eclass: 27270904 / 27-27-09-04



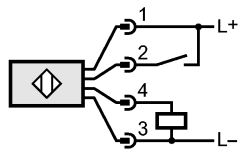
a: sensor
 b: object
 c: background
 x: distance sensor / object
 y: min. distance object / background



Values in [mm]
 1 = object black (6 % remission), background white (90 % remission)
 2 = object gray (18 % remission), background white (90 % remission)
 3 = object white (90 % remission), background white (90 % remission)

Environment	
Ambient temperature [°C]	-25...60
Protection	IP 67
Tests / approvals	
EMC	EN 60947-5-2
MTTF [Years]	556
Mechanical data	
Housing materials	housing: ABS; fixture: diecast zinc; LED window: SEPS; pushbutton: SEPS; connector body: Hytrel 8068; connector thread: stainless steel 316L / 1.4404
Lens material	PMMA
Weight [kg]	0.05
Displays / operating elements	
Output status indication	LED yellow
Power	LED green
Electrical connection	
Connection	PVC cable / 0.15 m; with M12 connector, gold-plated contacts

Wiring



Accessories	
Accessories (included)	Basic clip; E20964; 2 mounting screws; M3 x 16; 2 spring washers; 2 nuts
Remarks	
Remarks	cULus - Class 2 source required
Pack quantity [piece]	1