

- 1: pushbutton
- 2: Receiver
- 3: Transmitter

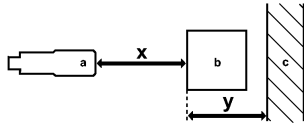


Product characteristics  
Diffuse reflection sensor  
Rectangular, plastics  
Cable with connector  
Electronic lock  
External teach function  
Front sensing  
Background suppression  
Range 15...400mm (Range referred to white paper 200 x 200 mm, 90 % remission)  
adjustable

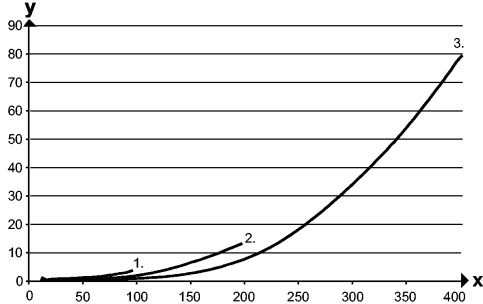
| Electrical data             |  |   |
|-----------------------------|--|---|
| Electrical design           |  | DC PNP  |
| Operating voltage [V]       |  | 10...30 DC  |
| Current consumption [mA]    |  | 25  |
| Type of light               |  | red light 660 nm  |
| Protection class            |  | III   |
| Reverse polarity protection |  | yes   |
| Outputs                     |  |   |
| Output function             |  | light-on / dark-on programmable                                       |
| Voltage drop [V]            |  | < 2.5   |
| Current rating [mA]         |  | 200   |
| Short-circuit protection    |  | yes (non-latching)  |
| Overload protection         |  | yes   |
| Switching frequency [Hz]    |  | 1000  |
| Monitoring range            |  |   |
| Range [mm]                  |  | 15...400 (Range referred to white paper 200 x 200 mm, 90 % remission) |
| Light spot diameter [mm]    |  | < 18 ( Range 150 mm )   |

**Background suppression chart**

**OJ5068 - Diffuse reflection sensor - eclass: 27270903 / 27-27-09-03**



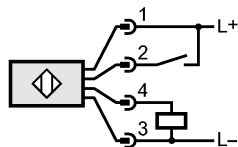
a: sensor  
 b: object  
 c: background  
 x: distance sensor / object  
 y: min. distance object / background



Values in [mm]  
 1 = object black (6 % remission), background white (90 % remission)  
 2 = object gray (18 % remission), background white (90 % remission)  
 3 = object white (90 % remission), background white (90 % remission)

|                               |   |
|-------------------------------|---|
| Environment                   |   |
| Ambient temperature [°C]      | -25...60  |
| Protection                    | IP 67   |
| Tests / approvals             |   |
| EMC                           | EN 60947-5-2  |
| MTTF [Years]                  | 556   |
| Mechanical data               |   |
| Housing materials             | housing: ABS; fixture: diecast zinc; LED window: SEPS; pushbutton: SEPS; connector body: PUR; connector thread: brass |
| Lens material                 | PMMA  |
| Weight [kg]                   | 0.051   |
| Displays / operating elements |   |
| Output status indication LED  | yellow  |
| Power LED                     | green   |
| Electrical connection         |   |
| Connection                    | PUR cable / 0.15 m; gold-plated contacts, with M12 connector  |

**Wiring**



**2: Teach**

|                        |  |
|------------------------|--|
| Accessories            |  |
| Accessories (included) | Basic clip; E20964; 2 mounting screws; M3 x 16; 2 spring washers; 2 nuts |
| Remarks                |  |
| Remarks                | cULus - Class 2 source required  |
| Pack quantity [piece]  | 1  |