

1: pushbutton
Receiver in upper lens
transmitter in lower lens



Product characteristics

Diffuse reflection sensor

Rectangular, plastics

Quick disconnect

Electronic lock

External teach function

Background suppression

LASER diffuse reflection sensor

Visible laser light, LASER CLASS 1

Side sensing

Range 7...150mm (Range referred to white paper 200 x 200 mm, 90 % remission)

adjustable

Electrical data

Electrical design

DC PNP

Operating voltage [V]

10...30 DC

Current consumption [mA]

13

Type of light

red light 650 nm

Life expectancy typ. [h]

50000

Protection class

III

Reverse polarity protection

yes

Outputs

Output function

light-on / dark-on programmable

Voltage drop [V]

< 2.5

Current rating [mA]

200

Short-circuit protection

yes (non-latching)

Overload protection

yes

Switching frequency [Hz]

1000

Monitoring range

Range [mm]

Range

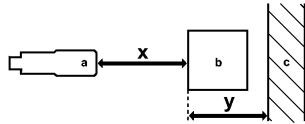
[mm]

7...150 (Range referred to white paper 200 x 200 mm, 90 % remission)

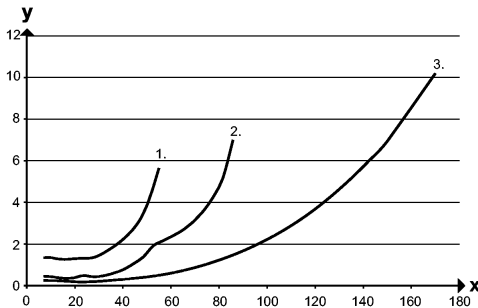
OJ5058 - Diffuse reflection sensor - eclass: 27270904 / 27-27-09-04

- Object white (90 % remission)		7...150
- Object grey (18 % remission)		7...55
- Object black (6 % remission)		7...36
Smallest detectable object	[mm]	0.8
Light spot diameter	[mm]	0.8

Background suppression chart



a: sensor
 b: object
 c: background
 x: distance sensor / object
 y: min. distance object / background

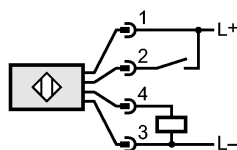


Values in [mm]
 1 = object black (6 % remission), background white (90 % remission)
 2 = object gray (18 % remission), background white (90 % remission)
 3 = object white (90 % remission), background white (90 % remission)

Environment

Ambient temperature	[°C]	-10...60
Protection		IP 67
Tests / approvals		
EMC		EN 60947-5-2
MTTF	[Years]	501
Mechanical data		
Housing materials		housing: ABS; fixture: diecast zinc; LED window: SEPS; pushbutton: SEPS
Lens material		PMMA
Weight	[kg]	0.044
Displays / operating elements		
Output status indication	LED	yellow
Power	LED	green
Electrical connection		
Connection		M8 connector

Wiring



2: Teach

Accessories		
Accessories (included)		Basic clip; E20964; 2 mounting screws; M3 x 16; 2 spring washers; 2 nuts
Remarks		
Remarks		Laser light

OJ5058 - Diffuse reflection sensor - eclass: 27270904 / 27-27-09-04

CLASS 1 LASER PRODUCT
IEC 60825-1 : 2007
complies with 21 CFR 1040.10 except for deviations
pursuant to Laser Notice No. 50, dated June 2007
cULus - Class 2 source required

Pack quantity	[piece]	1
---------------	---------	---