

1: pushbutton
Receiver in upper lens
transmitter in lower lens



Product characteristics
Diffuse reflection sensor
Rectangular, plastics
Quick disconnect
Electronic lock
Visible laser light, LASER CLASS 1
LASER diffuse reflection sensor
Background suppression
External teach function
Front sensing

Range 7...150mm (Range referred to white paper 200 x 200 mm, 90 % remission)
adjustable

Electrical data

Electrical design

Operating voltage	[V]
Current consumption	[mA]
Type of light	
Life expectancy typ.	[h]
Protection class	
Reverse polarity protection	

DC PNP

10...30 DC

13

red light 650 nm

50000

III

yes

Outputs

Output function

light-on / dark-on programmable

Voltage drop

< 2.5

Current rating

200

Short-circuit protection

yes (non-latching)

Overload protection

yes

Switching frequency

1000

Monitoring range

Range

7...150 (Range referred to white paper 200 x 200 mm, 90 % remission)

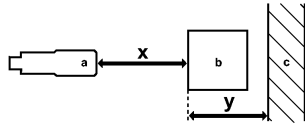
Smallest detectable object

0.8

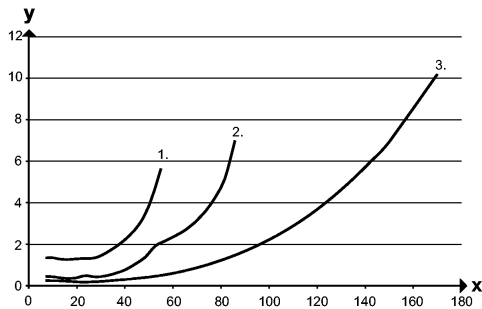
OJ5056 - Diffuse reflection sensor - eclass: 27270904 / 27-27-09-04

Light spot diameter [mm]	0.8
--------------------------	-----

Background suppression chart



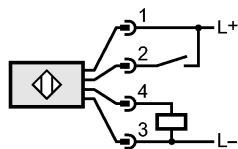
a: sensor
 b: object
 c: background
 x: distance sensor / object
 y: min. distance object / background



Values in [mm]
 1 = object black (6 % remission), background white (90 % remission)
 2 = object gray (18 % remission), background white (90 % remission)
 3 = object white (90 % remission), background white (90 % remission)

Environment	
Ambient temperature [°C]	-10...60
Protection	IP 67
Tests / approvals	
EMC	EN 60947-5-2
MTTF [Years]	501
Mechanical data	
Housing materials	housing: ABS; fixture: diecast zinc; LED window: SEPS; pushbutton: SEPS
Lens material	PMMA
Weight [kg]	0.043
Displays / operating elements	
Output status indication LED	yellow
Power LED	green
Electrical connection	
Connection	M8 connector

Wiring



2: Teach

Accessories	
Accessories (included)	Basic clip; E20964; 2 mounting screws; M3 x 16; 2 spring washers; 2 nuts
Remarks	
Remarks	Laser light CLASS 1 LASER PRODUCT IEC 60825-1 : 2007 complies with 21 CFR 1040.10 except for deviations pursuant to Laser Notice No. 50, dated June 2007 cULus - Class 2 source required

OJ5056 - Diffuse reflection sensor - eclass: 27270904 / 27-27-09-04

Pack quantity	[piece]	1
---------------	---------	---