

1: pushbutton
Receiver in upper lens
transmitter in lower lens



Product characteristics

Diffuse reflection sensor

Rectangular, plastics

Quick disconnect

Electronic lock

Visible laser light, LASER CLASS 1

LASER diffuse reflection sensor

Background suppression

External teach function

Side sensing

Range 15...200mm (Range referred to white paper 200 x 200 mm, 90 % remission)

adjustable

Electrical data

Electrical design

Operating voltage [V]

Current consumption [mA]

Type of light

Life expectancy typ. [h]

Protection class

Reverse polarity protection

Outputs

Output function

Voltage drop [V]

Current rating [mA]

Short-circuit protection

Overload protection

Switching frequency [Hz]

Monitoring range

Range [mm]

Range [mm]

DC PNP

10...30 DC

13

red light 650 nm

50000

III

yes

light-on / dark-on programmable

< 2.5

200

yes (non-latching)

yes

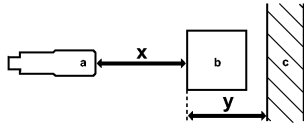
1000

15...200 (Range referred to white paper 200 x 200 mm, 90 % remission)

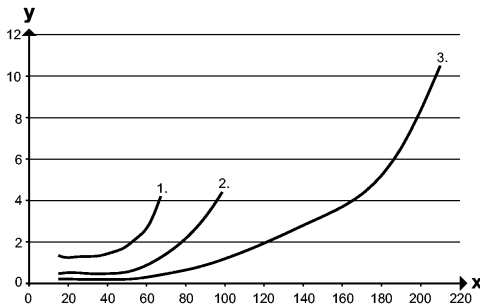
OJ5054 - Diffuse reflection sensor - eclass: 27270904 / 27-27-09-04

- Object white (90 % remission)	15...200
- Object grey (18 % remission)	15...70
- Object black (6 % remission)	15...45
Smallest detectable object [mm]	2
Light spot diameter [mm]	2 x 1 (vertical)

Background suppression chart



- a: sensor
- b: object
- c: background
- x: distance sensor / object
- y: min. distance object / background

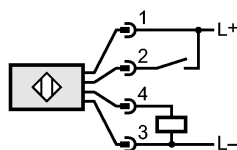


- Values in [mm]
- 1 = object black (6 % remission), background white (90 % remission)
 - 2 = object gray (18 % remission), background white (90 % remission)
 - 3 = object white (90 % remission), background white (90 % remission)

Environment

Ambient temperature [°C]	-10...60
Protection	IP 67
Tests / approvals	
EMC	EN 60947-5-2
MTTF [Years]	501
Mechanical data	
Housing materials	housing: ABS; fixture: diecast zinc; LED window: SEPS; pushbutton: SEPS
Lens material	PMMA
Weight [kg]	0.043
Displays / operating elements	
Output status indication LED	yellow
Power LED	green
Electrical connection	
Connection	M8 connector

Wiring



2: Teach

Accessories	
Accessories (included)	Basic clip; E20964; 2 mounting screws; M3 x 16; 2 spring washers; 2 nuts
Remarks	
Remarks	Laser light

OJ5054 - Diffuse reflection sensor - eclass: 27270904 / 27-27-09-04

CLASS 1 LASER PRODUCT
IEC 60825-1 : 2007
complies with 21 CFR 1040.10 except for deviations
pursuant to Laser Notice No. 50, dated June 2007
cULus - Class 2 source required

Pack quantity [piece]

1