

no longer available - archive entry

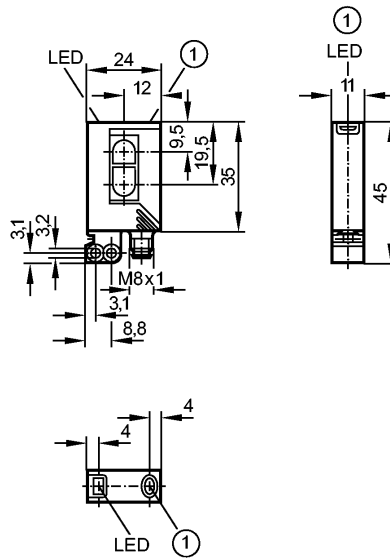
efector200

OJ5045



OJH-FNKG/FO/AS

Photoelectric sensors



1: pushbutton
Receiver in upper lens
transmitter in lower lens



Product characteristics
Diffuse reflection sensor

Rectangular, plastics

Quick disconnect

Electronic lock

Background suppression

External teach function

Front sensing

Range 15...400mm (Range referred to white paper 200 x 200 mm, 90 % remission)

adjustable

Electrical data

Electrical design

DC NPN

Operating voltage [V]

10...30 DC

Current consumption [mA]

25

Type of light

red light 660 nm

Protection class

III

Reverse polarity protection

yes

Outputs

Output function

light-on / dark-on programmable

Voltage drop [V]

< 2.5

Current rating [mA]

200

Short-circuit protection

yes (non-latching)

Overload protection

yes

Switching frequency [Hz]

1000

Monitoring range

Range [mm]

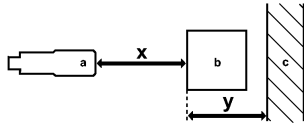
15...400 (Range referred to white paper 200 x 200 mm, 90 % remission)

Light spot diameter [mm]

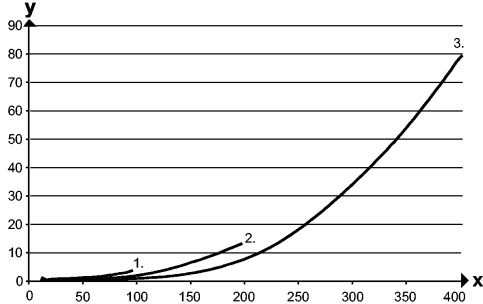
< 18 (Range 150 mm)

Background suppression chart

OJ5045 - Diffuse reflection sensor - eclass: 27270904 / 27-27-09-04



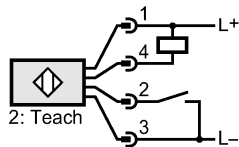
a: sensor
 b: object
 c: background
 x: distance sensor / object
 y: min. distance object / background



Values in [mm]
 1 = object black (6 % remission), background white (90 % remission)
 2 = object gray (18 % remission), background white (90 % remission)
 3 = object white (90 % remission), background white (90 % remission)

Environment	
Ambient temperature [°C]	-25...60
Protection	IP 67
Tests / approvals	
EMC	EN 60947-5-2
MTTF [Years]	574
Mechanical data	
Housing materials	housing: ABS; fixture: diecast zinc; LED window: SEPS; pushbutton: SEPS
Lens material	PMMA
Weight [kg]	0.042
Displays / operating elements	
Output status indication LED	yellow
Power LED	green
Electrical connection	
Connection	M8 connector

Wiring



Accessories	
Accessories (included)	Basic clip; E20964; 2 mounting screws; M3 x 16; 2 spring washers; 2 nuts
Remarks	
Remarks	cULus - Class 2 source required
Pack quantity [piece]	1