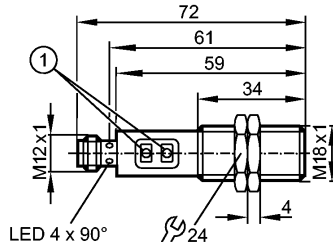


OGH700

OGHLFPKG/US100

Photoelectric sensors



1: Programming buttons



Product characteristics

Diffuse reflection sensor

Threaded type

M18 x 1

Quick disconnect

Background suppression

Visible laser light, LASER CLASS 1

Range 20...200mm (Range referred to white paper 200 x 200 mm, 90 % remission)

adjustable

Electrical data

Electrical design	DC PNP
Operating voltage [V]	10...36 DC
Current consumption [mA]	15
Type of light	red light 655 nm
Life expectancy typ. [h]	50000
Protection class	II
Reverse polarity protection	yes

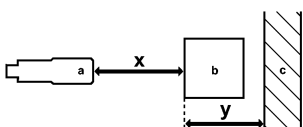
Outputs

Output function	light-on / dark-on programmable via pushbutton
Voltage drop [V]	< 2.5
Current rating [mA]	200
Short-circuit protection	yes (non-latching)
Overload protection	yes
Switching frequency [Hz]	1000

Monitoring range

Range [mm]	20...200 (Range referred to white paper 200 x 200 mm, 90 % remission)
Range [mm]	20...200
- Object white (90 % remission)	20...200
- Object grey (18 % remission)	20...100
- Object black (6 % remission)	20...70
Smallest detectable object [mm]	1.5
Light spot diameter [mm]	1.2

Background suppression chart

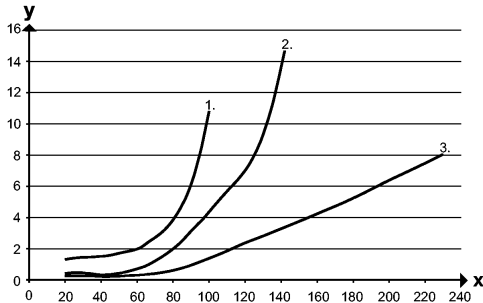


OGH700

OGHLFPKG/US100


Photoelectric sensors

a: sensor
 b: object
 c: background
 x: distance sensor / object
 y: min. distance object / background



Values in [mm]

- 1 = object black (6 % remission), background white (90 % remission)
- 2 = object gray (18 % remission), background white (90 % remission)
- 3 = object white (90 % remission), background white (90 % remission)

Environment		
Ambient temperature	[°C]	-10...60
Protection		IP 65 / IP 67
Tests / approvals		
EMC		EN 60947-5-2
MTTF	[Years]	485
Mechanical data		
Housing materials		stainless steel 316L / 1.4404; PA; LCP; EPDM; TPU (urethane)
Lens material		PMMA
Weight	[kg]	0.064
Displays / operating elements		
Output status indication	LED	yellow
Electrical connection		
Connection		M12 connector
Wiring		
		
Accessories		
Accessories (included)		2 lock nuts
Remarks		
Remarks		Laser light CLASS 1 LASER PRODUCT IEC 60825-1 : 2007 complies with 21 CFR 1040.10 except for deviations pursuant to Laser Notice No. 50, dated June 2007 cULus - Class 2 source required
Pack quantity	[piece]	1