

1: Programming buttons



Product characteristics
Diffuse reflection sensor

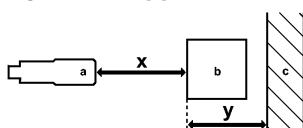
Threaded type	
M18 x 1	
Quick disconnect	
Background suppression	
Range 15...300mm (Range referred to white paper 200 x 200 mm, 90 % remission)	
adjustable	

Electrical data	
Electrical design	DC PNP
Operating voltage [V]	10...36 DC
Current consumption [mA]	25
Type of light	red light 624 nm
Protection class	II
Reverse polarity protection	yes

Outputs	
Output function	light-on / dark-on programmable via pushbutton
Factory setting	light-on mode
Voltage drop [V]	< 2.5
Current rating [mA]	150; 200 (...60 °C)
Short-circuit protection	yes (non-latching)
Overload protection	yes
Switching frequency [Hz]	1000

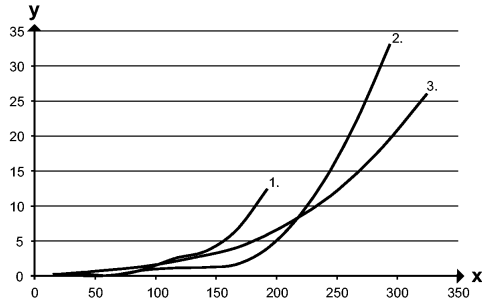
Monitoring range	
Range [mm]	
Range [mm]	15...300 (Range referred to white paper 200 x 200 mm, 90 % remission)
- Object white (90 % remission)	15...300
- Object grey (18 % remission)	15...290
- Object black (6 % remission)	15...190
Light spot diameter [mm]	25 (at maximum range)

Background suppression chart



a: sensor
b: object
c: background
x: distance sensor / object
y: min. distance object / background

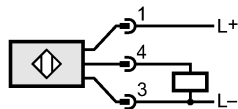
OGH500 - Diffuse reflection sensor - eclass: 27270904 / 27-27-09-04



Values in [mm]
 1 = object black (6 % remission), background white (90 % remission)
 2 = object gray (18 % remission), background white (90 % remission)
 3 = object white (90 % remission), background white (90 % remission)

Environment	
Ambient temperature [°C]	-25...80
Protection	IP 67
Tests / approvals	
EMC	EN 60947-5-2
MTTF [Years]	362
Mechanical data	
Housing materials	stainless steel 316L / 1.4404; PA; LCP; EPDM; TPU (urethane)
Lens material	PMMA
Weight [kg]	0.063
Displays / operating elements	
Output status indication LED	yellow
Electrical connection	
Connection	M12 connector

Wiring



Accessories	
Accessories (included)	2 lock nuts
Remarks	
Remarks	cULus - Class 2 source required
Pack quantity [piece]	1