

no longer available - archive entry Alternative article: OGS700

When selecting an alternative article and accessories please note that technical data may differ!

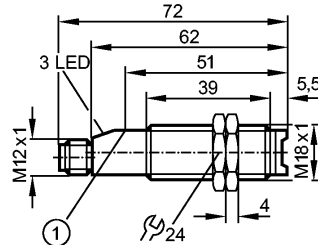
efector200

OG5059



OGSLOOKG/B6/V4A/US-100

Photoelectric sensors



1: pushbutton



Product characteristics

Through-beam sensor

Threaded type

M18 x 1

Quick disconnect

Visible laser light, protection class 2 laser

gold-plated contacts

Transmitter

Sensing range 60m

Electrical data

Electrical design

Operating voltage [V]

Current consumption [mA]

Type of light

Life expectancy typ. [h]

Protection class

Reverse polarity protection

Outputs

Short-circuit protection

Overload protection

Monitoring range

Sensing range [m]

Smallest detectable object [mm]

Light spot diameter [mm]

Environment

Ambient temperature [°C]

Protection

Tests / approvals

EMC

Mechanical data

Housing materials

Lens material

Weight [kg]

Displays / operating elements

Power LED

Electrical connection

Connection

Wiring

DC

10...30 DC

< 17

red light 675 nm

50000

II

yes

yes (non-latching)

yes

60

3

< 150 (at maximum range)

-10...50

IP 67

EN 60947-5-2

stainless steel 316L / 1.4404; PBT

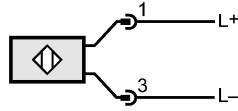
PMMA

0.074

green

M12 connector; gold-plated contacts

OG5059 - Through-beam sensor - eclass: 27270901 / 27-27-09-01



Accessories

Accessories (included)

2 lock nuts

Remarks

Remarks

Caution: Laser Light

Power \leq 2.2 mW wavelength = 675 nm

Frequency = 2.2 kHz pulse length = 24 μ s

Do not stare into beam

Avoid exposure to the laser light

Class 2 laser product

EN60825-1 July 1994

Pack quantity

[piece]

1

ifm efector, inc. • 1100 Atwater Drive • Malvern • PA 19355 — We reserve the right to make technical alterations without prior notice. — US — OG5059 — 16.07.2007

no longer available - archive entryAlternative article: OGS700

When selecting an alternative article and accessories please note that technical data may differ!