

no longer available - archive entry

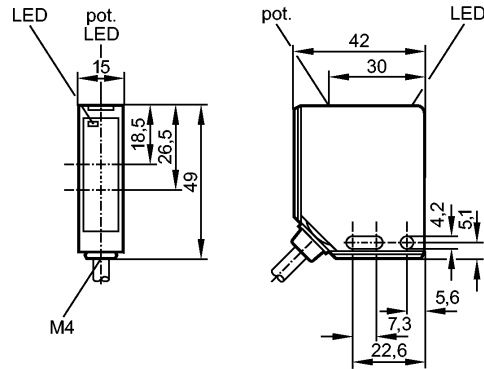
efector200

OC5215



OCH-CPKG

Photoelectric sensors



Receiver in upper lens, transmitter in lower lens



Product characteristics

Diffuse reflection sensor

Rectangular Metal

Cable

Background suppression

Range 20...250mm (referred to white paper 200 x 200 mm)

adjustable

Electrical data

Electrical design

DC PNP

Operating voltage [V]

10...30 DC

Current consumption [mA]

< 40

Type of light

Infrared light 880 nm

Protection class

II

Reverse polarity protection

yes

Outputs

Output function

complementary

Voltage drop [V]

< 2.9

Current rating [mA]

100

Short-circuit protection

yes (non-latching)

Overload protection

yes

Switching frequency [Hz]

1500

Monitoring range

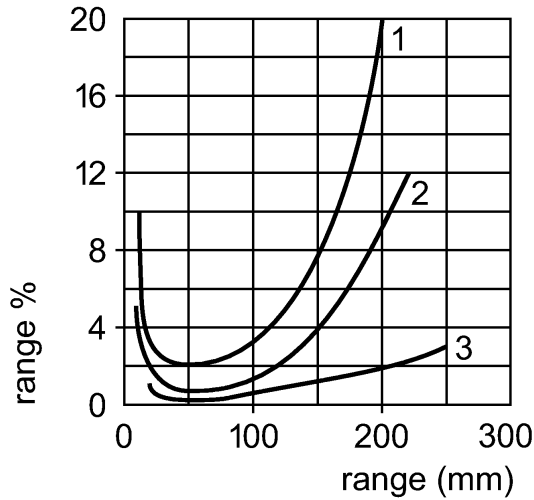
Range [mm]

20...250 (referred to white paper 200 x 200 mm)

Light spot diameter [mm]

12.5 (at maximum range)

Background suppression chart



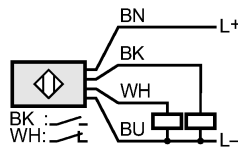
1 = object black 6 % remission, background white 90 % remission 2 = object gray 18 % remission, background white 90 % remission 3 = object white 90 % remission, background white 90 % remission Note: range % = setting in % of the range

Environment	
Ambient temperature [°C]	-40...60
Protection	IP 67
Tests / approvals	
EMC	EN 60947-5-2
Mechanical data	
Housing materials	diecast zinc
Lens material	PMMA
Weight [kg]	0.158
Displays / operating elements	
Output status indication LED	yellow (permanently lit)
Function display LED	yellow (flashing)
Electrical connection	
Connection	PVC cable / 2 m; 4 x 0.5 mm ²

Wiring

Core colors

- BN brown
- BU blue
- BK black
- WH white



Accessories	
Accessories (included)	screwdriver
Remarks	
Pack quantity [piece]	1