

no longer available - archive entry replaced by: OBF503

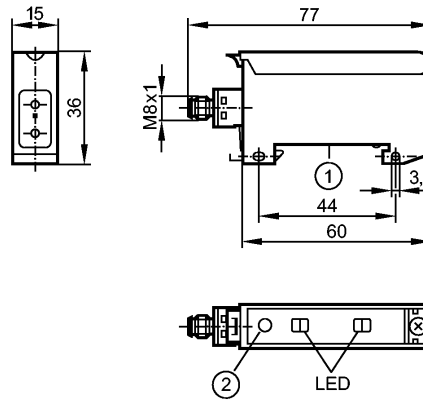
efector200

OB5025



OBF-FPKG/AS-610

Photoelectric sensors



1: Mounting on DIN rail

2: setting pushbuttons



Product characteristics

Fiber-optic amplifier

Rectangular, plastics

Quick disconnect

For fiber optics with plastic sheath

Series FE/FT-11

Sensing range 0...1200mm (Through-beam sensor)

Range 0...70mm (Diffuse reflection sensor)

adjustable

Electrical data

Electrical design

DC PNP

Operating voltage [V]

10...30 DC

Current consumption [mA]

35 (24 V)

Type of light

red light 660 nm

Protection class

III

Reverse polarity protection

yes

Outputs

Output function

light-on / dark-on programmable

Voltage drop [V]

< 2.5

Current rating [mA]

100

Short-circuit protection

yes (non-latching)

Overload protection

yes

Switching frequency [Hz]

500

Monitoring range

Sensing range [m]

0...1.2 (Through-beam sensor)

Range [mm]

0...70 (Diffuse reflection sensor)

Environment

Ambient temperature [°C]

-25...60

Protection

IP 65

Tests / approvals

EMC

EN 60947-5-2

EN 55011:

class B

MTTF [Years]

515

Mechanical data

Housing materials

ABS

Weight [kg]

0.057

OB5025 - Fiber-optic amplifier - eclass: 27270905 / 27-27-09-05

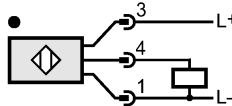
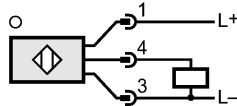
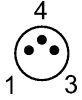
Displays / operating elements

Output status indication	LED	yellow
Power	LED	green
Unsafe zone	LED	red

Electrical connection

Connection	M8 connector
------------	--------------

Wiring



Remarks

Remarks	<p>When through-beam fibre optics are connected light-on mode means the output function "NC" and when diffuse reflection fibre optics are connected the output function "NO".</p> <p>When through-beam fibre optics are connected dark-on mode means the output function "NO" and when diffuse reflection fibre optics are connected the output function "NC"</p>
---------	---

Pack quantity	[piece]	1
---------------	---------	---